








<p style="text-align: center;"><b>Speed Cushion</b></p> <p>A segmented speed hump which allows for the passage of larger vehicles, such as emergency or buses, without difficulty while still reducing passenger speeds.</p>	 <p>Source: National Association of City Transportation</p>
<p style="text-align: center;"><b>Raised Crosswalk</b></p> <p>A marked pedestrian crosswalk at an intersection or mid-block location contrusted at a higher elevation than the adjacent roadway.</p>	 <p>Source: District of Squamish, BC</p>
<p style="text-align: center;"><b>Speed Hump/Table</b></p> <p>A raised area of a roadway, which deflecs both wheels and body of a traversing vehicle. A speed table is an elongated raised speed hump with a flat topped section that is long enough to raise the enire wheelbase of a vehicle.</p>	 <p>Source: Transportation Association of Canada</p>
<p style="text-align: center;"><b>Raised Intersection</b></p> <p>A full intersection including crosswalks, contrusted at a higher elevation that the adjacent roadway.</p>	 <p>Source: National Association of City Transportation</p>

<p style="text-align: center;"><b>Chicane</b></p> <p>A series of curb extensions on alternating sides of a roadway, which narrows the roadway, and require drivers to steer from one side of the roadway to the other to travel through the chicane.</p>	 <p style="text-align: center;">Source: Traffic Calming Guide for Toronto</p>
<p style="text-align: center;"><b>Curb Radius Reduction</b></p> <p>Reconstruction of the corner of an intersection that uses a smaller radius, usually 3 to 5m range.</p>	 <p style="text-align: center;">Source: National Association of City Transportation</p>
<p style="text-align: center;"><b>Traffic Circle/Button/Mini Roundabout</b></p> <p>Raised island in the centre of an intersection that requires vehicles to drive in a circular, counterclockwise direction through the intersection.</p>	
<p style="text-align: center;"><b>Curb Extension</b></p> <p>A horizontal intrusion of the curb into the roadway resulting in a narrower width.</p>	 <p style="text-align: center;">Source: National Association of City Transportation</p>

**Raised Median Island**

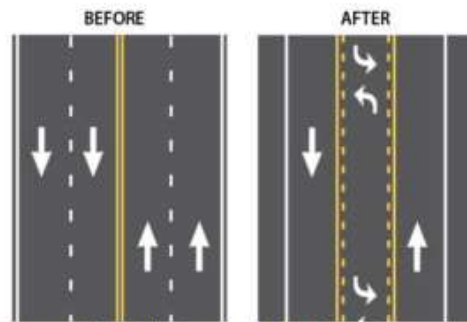
Elevated median constructed along the centreline of a two-way road that reduces the lane widths.



Source: Federal Highway Association

**Road Diet**

Reconfiguration of roadway that reduces the number of lanes and allocates the reclaimed space for other uses.



Source: The Kinder Institute for Urban Research

**On-Street Parking**

The reduction of the roadway width available for vehicle movement by allowing motor vehicles to park adjacent and parallel to the curb.



Source: City of Toronto

**Sidewalk Extension/Textured Crosswalk**

A sidewalk that is continued across a local street intersection at the level of the roadway and a textured and/or patterned surface which contrasts with the adjacent roadway is incorporated.



Source: Endurablend Polymer Cement Surfacing

<p><b>Pavement Markings</b></p> <p>Markings that provide information to drivers.</p>	
<p><b>Speed Display Devices</b></p> <p>Interactive signs that display the speed of an oncoming vehicle by using radar speed detectors.</p>	
<p><b>“Speed Watch” Program</b></p> <p>Volunteers and residents are involved to help monitor traffic and record license plate of vehicles travelling at excessive speeds.</p>	