



Staff Report to Council for information only), Staff incorporated Public Works scope items for connectivity and safety, as well as operational and cost effectiveness.

This type of construction coordination is common and encouraged because it results in less disruptions to the public and a more efficient use of tax dollars. A summary of the additional items are, including but not limited to: the multi-use path from Latoria down the West side of Klahanie to Ashbury and split-rail fence separation from the roadway which resulted in the Post Office Box having to be set-back, some retaining wall work, moving street-lighting, and a culvert extension, all while minimizing environmental impact. See snippets from issued for tender drawings below, for information only (*Figure 1 & 2*).

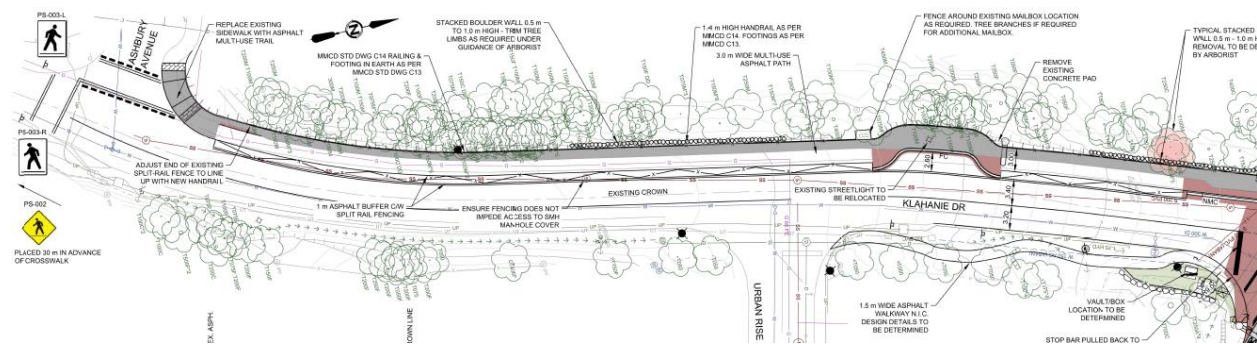


Figure 2: Klahanie Multi-Use Path Addition Plan View IFT Snippet

## COMMENTARY:

The project was tendered publicly on BC Bid. The tender closed on Thursday May 11th at 2:00 p.m. A total of two (2) bids were received. In accordance with the City's Purchasing Policy, all bids were opened and witnessed publicly. The bids were then reviewed by the project consultant, Associated Engineering (B.C.) Ltd. Results of the tender price are summarized in the table below, listed in alphabetical order. The tender price is listed exclusive of GST because the City claims the GST back. Both bids proposed a Substantial Performance date of September 30<sup>th</sup>, 2023 with a 12 week construction period.

CONTRACTOR	TENDER PRICE
Draycor Construction Ltd.	\$1,066,792.00
Hazelwood Construction Services Inc.	\$1,319,048.03*

\*Tender price adjusted due to minor arithmetic errors

Draycor Construction Ltd. was the lowest bidder at an amount of \$1,066,792.00 plus GST and the only bid under the combined budget of \$1,170,000 (see breakdown under Financial Implications). Staff are therefore recommending that the construction contract for the Latoria-Klahanie Traffic Signal and Pedestrian Improvements project be awarded to Draycor Construction Ltd.

**FINANCIAL IMPLICATIONS:**

All capital scope items related to the signalization of the intersection, frontage works, site preparation, electrical, street lighting and hydro-pole relocation will be paid for out of the approved Road DCC project budget of \$900,000. All operational scope items will be paid for out of the appropriate Public Works budgets. The estimated budget for Road Maintenance in this area was \$90,000 and Multi-Use Path along Klahanie was \$180,000; for a combined total project budget of \$1,170,000.

**LEGAL IMPLICATIONS:**

None noted.

**OPTIONS:**

**Option 1**

THAT Council award the construction contact for the Latoria-Klahanie Traffic Signal and Pedestrian Improvements project at an amount of \$1,066,792.00 plus GST to Draycor Construction Ltd. and fund the project with Road DCC, Road Maintenance, and Multi-Use Path budgets.

**OR Option 2**

THAT Council not award the construction contact for the Latoria-Klahanie Traffic Signal and Pedestrian Improvements project at this time.

**SUBMITTED BY: Katelyn Balzer, P.Eng., Director of Engineering and Public Works**

**Concurrence:** Donna Petrie, Senior Manager of Business Development and Events

**Concurrence:** Yari Nielsen, Director of Parks, Recreation and Facilities

**Concurrence:** Matthew Baldwin, MCIP, RPP, Director of Planning and Subdivision

**Concurrence:** Katelyn Balzer, P.Eng., Director of Engineering and Public Works

**Concurrence:** Michael Dillabaugh, CPA, CA, Director of Finance

**Concurrence:** Marie Watmough, Deputy Director of Corporate Services

**Concurrence:** Braden Hutchins, Director of Corporate Services

**Concurrence:** Darren Kiedyk, Chief Administrative Officer