



# Staff Report to Council

**DATE:** Monday, January 16, 2023

**DEPARTMENT:** Engineering

**SUBJECT:** Latoria Road New Signalized Intersection Road DCC Project

**BACKGROUND:**

School District No. 62 (Sooke) (SD62) is constructing a new elementary school at 802 Latoria Road (shown below).



A new signal light is planned for this location on Latoria Road at Klahanie Road. The signal light and associated works such as sidewalk along the school frontage are part of this intersection signalization project.

The purpose of this report is to inform Council of the new signalized intersection and obtain permission to tender the project early in 2023 so that it may be completed to support school construction.

**COMMENTARY:**

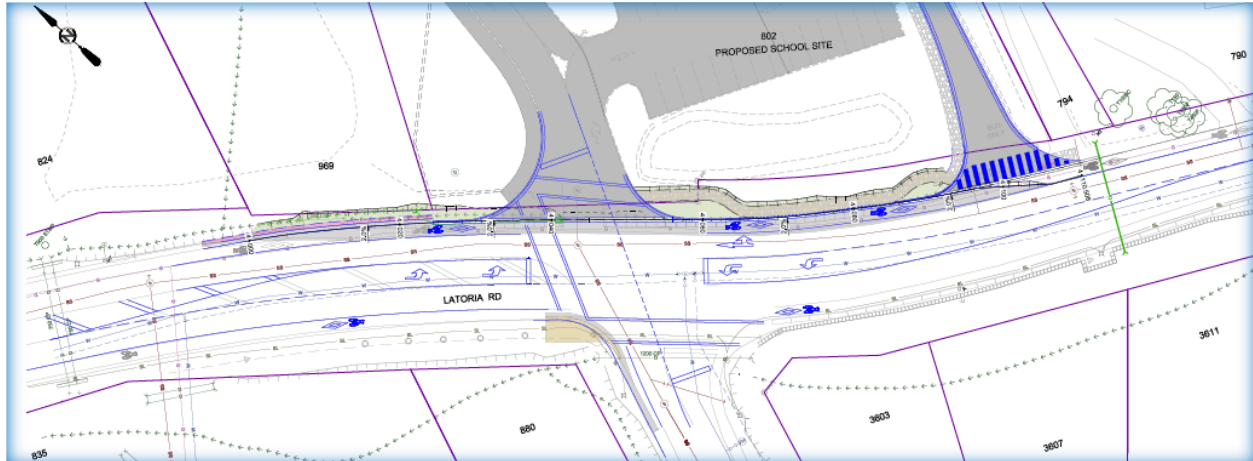
The City retained Associated Engineering in 2022 to complete the detailed design of the new signalized intersection on Latoria Road at Klahanie Road. The design work for the new signalized intersection began in 2022 to align with the construction timing of the new elementary school.

The City of Langford often works jointly and cooperatively with SD62 such that both the City and the School District realize cost efficiencies for our collective projects. In this case the location of the new signalized intersection relates to the access to the school; therefore, the signal design had to coincide with the architectural design and layout of the school so that the driveways and onsite vehicle circulation could be properly considered.

The new school is slated to open in the Fall of 2025, however constructing the new signalized intersection in 2023 will allow the construction contractors for the school to use the intersection making it safer for site access. In addition, activating the signal in advance of the school opening allows drivers, pedestrians, and cyclists to become familiar with the traffic pattern change associated with a new signal prior to the opening of the school.

The signalized intersection of Latoria at Klahanie Road is included in the City's Road Development Cost Charge (Road DCC) program. Funding is provided from Road DCCs as opposed to taxpayer dollars.

The figure below illustrates the ultimate configuration of the new signalized intersection showing the school access points:



The school's primary access is the driveway at the west side of the school property, located within the new signalized intersection. School buses and staff will use the westerly access point. Student pick up and drop off will also be via the westerly driveway. School buses may enter the easterly driveway if they are coming from the east (Veterans Memorial Parkway area) only. Left turns from Latoria Road into the easterly driveway will not be permitted except for emergency vehicles. Internally onsite, the school bus loop is separate from the student pick up and drop off parking areas. This has worked successfully at Belmont High School and at Centre Mountain Lellum Middle School and Pexsisen Elementary, opened this year on Constellation Avenue.

On a related note, the City has a master pedestrian plan for Latoria Road that includes the following connections to the school:

- On **Klahanie Road** – a paved multi use path planned for 2023 that will be on the west side of Klahanie Road and will enter into the new signalized intersection at the main school driveway. Pedestrians and cyclists coming from the southerly extents of Klahanie toward Latoria Road will connect to the westerly path via pre-determined crossings. This includes connectivity from the future Olympic View development site that will connect to Klahanie Drive via Gwendolynn Drive (350m south of Latoria Road).
- On **Latoria Road (in front of the school)** – a concrete sidewalk constructed between the two driveways. This matches the trail construction on either side of the school.

- On **Latoria Road (east of the school site)** – a multi-use trail on the north side of Latoria Road with appropriate pedestrian crossing opportunities for students on the south side of Latoria Road.
- On **Latoria Road (west of the school site)** – a combination of multi-use trails and sidewalks.
- **North of the school site property** – the land above/north of the school site property is a subdivision under development. This area will have sidewalks and then a trail that will access the school grounds directly at the northwesterly corner of the school site.

The Ultimate Pedestrian Network Alignment on Latoria Road is attached **for information only** and is not the subject of this staff report. Should Council wish to have further discussions on the Latoria Road pedestrian network, staff suggest this be taken to a future meeting of Council or a future committee.

Council may wish to direct staff to tender this project in January to have the best opportunity to get multiple bidders on the project. Our experience has shown that the best pricing and opportunity to get contractors to bid is obtained when projects are tendered earlier in the year. This also allows projects to complete early enough in the calendar year to avoid the colder, wetter fall weather that can impede paving and concrete work.

#### **FINANCIAL IMPLICATIONS:**

The signalized intersection at Latoria and Klahanie is included in the Road Development Cost Charge program to be funded by Road DCCs. SD62 will be paying Road DCCs at the time of building permit. Those fees will be \$240,000 and will be directly allocated as their share to the signalized intersection project as part of the schools frontage improvements. This project is included in the Road DCC program, there are contributions from the general Road DCC income as well for this specific project.

The estimated construction cost for this signalized intersection includes the civil construction costs (road works) at \$328,000 which currently includes a 40% or \$99,000 contingency and the electrical costs to purchase the signal infrastructure, controllers etc at \$422,000 that includes a 30% contingency of \$97,000. The healthy contingency is reflective of the stage the drawings are currently at as well as current market conditions. Typically, once the drawings get nearest to their completion the contingency percentage decreases and the estimated construction cost becomes more accurate. For the purposes of this report and to be conservative we are using the contingency percentages above for a total estimated construction cost of \$775,000.

Engineering consulting fees for tender and construction inspection services estimated at \$60,000 for the civil, electrical and some structural engineering for pole support.

The City has made a request to ICBC for funding for this project. The results of that request are expected in early January 2023, and will be presented verbally at the January 16<sup>th</sup>, 2023 meeting for Council consideration with this report.

**LEGAL IMPLICATIONS:**

The entire project will be completed within City owned road right of way.

**OPTIONS:**

**Option 1**

THAT Council direct staff to tender the signalized intersection construction on Latoria Road at Klahanie Road in early 2023 and that Council approve the inclusion of this project within the 2023 Capital Plan in the 2023-2027 Five Year Financial Plan to be funded by Road DCCs.

**OR Option 2**

THAT Council not direct staff to tender signalized intersection construction on Latoria Road at Klahanie Road in 2023.

**SUBMITTED BY:** Michelle Mahovlich, P.Eng, P.Geo, Director of Engineering and Public Works

**Concurrence:** Donna Petrie, Senior Manager of Business Development and Events

**Concurrence:** Will Ying-udomrat, Manager of Legislative Services

**Concurrence:** Matthew Baldwin, MCIP, RPP, Director of Planning and Subdivision

**Concurrence:** Trevor Auger, ASCT Deputy Director of Engineering Construction

**Concurrence:** Michael Dillabaugh, CPA, CA, Director of Finance

**Concurrence:** Michelle Mahovlich, Acting Chief Administrative Officer

Attachment: Latoria Road Ultimate Pedestrian Network Alignment (**attached for information only**)