

ENLARGED CONCEPT PLAN
SCALE: 1:2.1

CONSTRUCTION NOTES:

- 1 CONSTRUCT CONCRETE PAD
RE: SHEET 1 OF 6 DETAIL 1
- 2 CONSTRUCT ASPHALT PAVEMENT
RE: SHEET 1 OF 6 DETAIL 2
- 3 INSTALL DOCKZILLA DOCK BUMPER & SEAL
RE: SHEET 2 OF 6 DETAIL 2
- 4 CONSTRUCT ELECTRICAL PEDESTAL AND INSTALL ELECTRICAL EQUIPMENT
(OR TEMPORARY GENERATOR)
RE: SHEET 2 OF 6 DETAIL 4
- 5 CONSTRUCT BOLLARDS. ENSURE BOLLARD PLACEMENT DOES NOT OBSTRUCT ACCESS TO THE ELECTRICAL PEDESTAL, THE LOAD DOORS, OR THE PERSONNEL DOORS
RE: SHEET 2 OF 6 DETAIL 3
- 6 POSITION MOBILE DOCK THAT THE MOBILE DOCK IS 24" ABOVE FINAL GRADE
- 7 CONSTRUCT SECURITY FENCE
RE: SHEET 2 OF 6 DETAIL 1
- 8 CONSTRUCT CANTILEVER GATE
- 9 CONSTRUCT CANTILEVER GATE REMOVE EXIT LOOP
- 10 CONSTRUCT CANTILEVER GATE KEYPAD ENTRY
- 11 CONSTRUCT DOCK LIGHT ON A DEDICATED SWITCH
- 12 INSTALL PARKING BLOCK
RE: SHEET 3 OF 6 DETAIL 2
- 13 NEW ELECTRICAL CONTAINER
- 14 INSTALL PEDESTRIAN GATE
RE: SHEET 3 OF 6 DETAIL 1
- 15 CONSTRUCT GRAVEL PAVEMENT
RE: SHEET 1 OF 6 DETAIL 3

GENERAL NOTES:

- 1. ALL CONSTRUCTION TO CONFORM TO THE CITY OF LANGFORD BUILDING DEPARTMENT STANDARDS AND SPECIFICATIONS
- 2. CONTRACTOR MUST CONTACT CITY OF LANGFORD TRAFFIC OPERATIONS SUPERVISOR PRIOR TO CONSTRUCTION OR PLACEMENT OF TRAFFIC CONTROL DEVICES/FEATURES (STRIPING, SIGNALS, MEDIANS, ETC.) FOR CONSTRUCTION IN THE RIGHT OF WAY.
- 3. ALL DIMENSIONS ARE IN METERS UNLESS OTHERWISE INDICATED.
- 4. CONCRETE TRUCK LANDING PAD MUST BE LEVEL

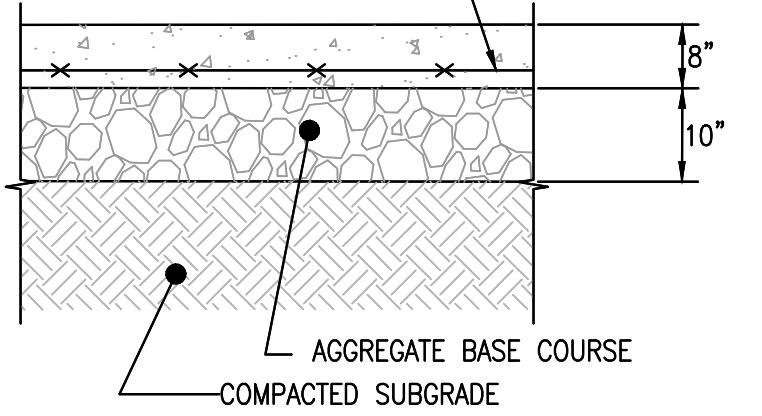
PAVEMENT NOTES:

- 1. ASPHALT PAVEMENT AREA:
6,852 SQUARE METERS (73,752 SQUARE FEET)
- 2. STONE PAVEMENT AREA:
6,807 SQUARE METERS (73,270 SQUARE FEET)

NOTES:

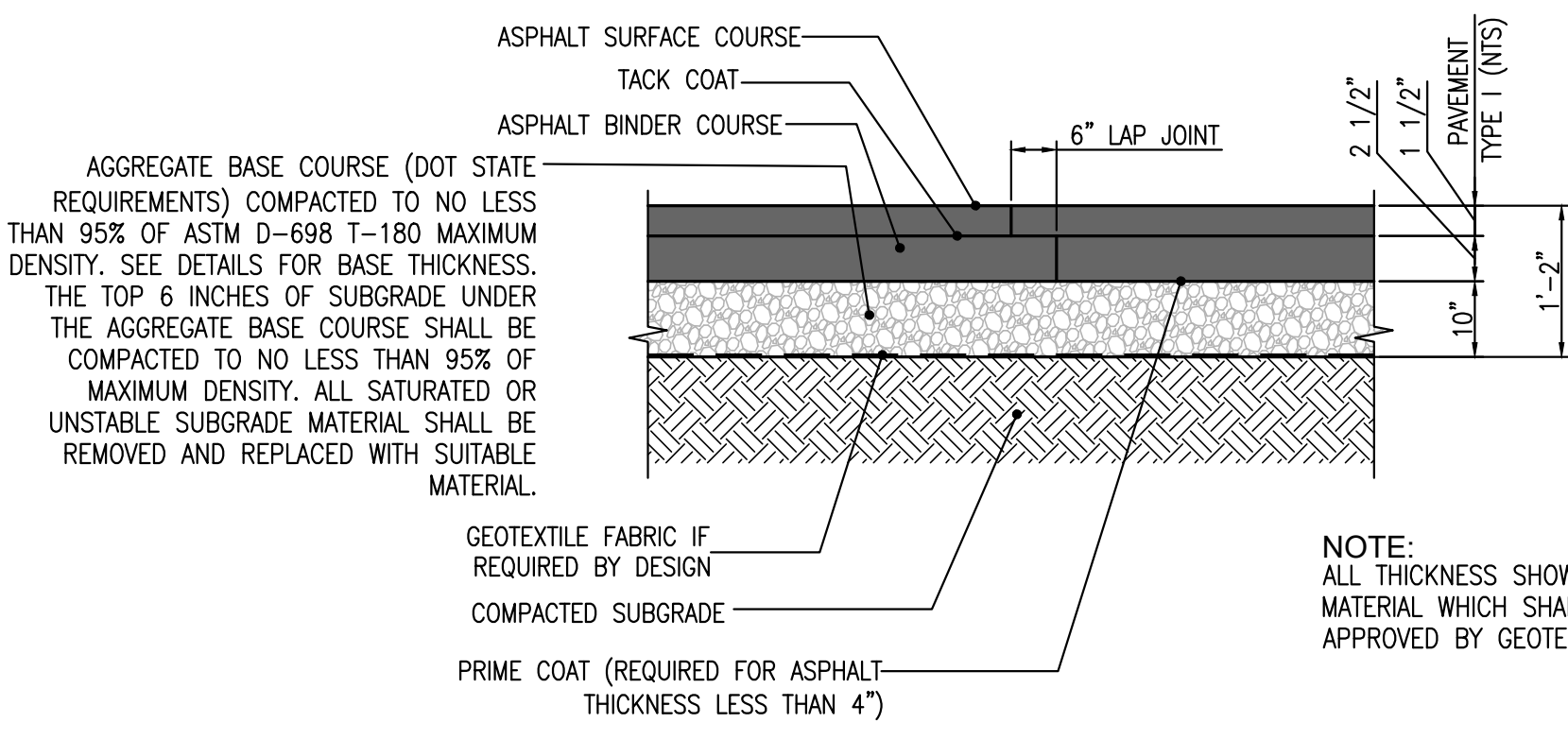
- 1. ALL THICKNESSES SHOWN ARE MINIMUM COMPACTED MATERIAL WHICH SHALL BE REVIEWED AND APPROVED BY GEOTECHNICAL ENGINEER.
- 2. REFER TO THE GEOTECHNICAL REPORT FOR SPECIFICATIONS FOR THE MAXIMUM AND MINIMUM STONE PAVEMENT SLOPE REQUIREMENTS.
- 3. AGGREGATE BASE COURSE COMPACTED TO NO LESS THAN 95% OF ASTM D-698 T-180 MAXIMUM DENSITY. SEE DETAILS FOR BASE THICKNESS. THE TOP 6 INCHES OF SUBGRADE UNDER THE AGGREGATE BASE COURSE SHALL BE COMPACTED TO NO LESS THAN 95% OF MAXIMUM DENSITY. ALL SATURATED OR UNSTABLE SUBGRADE MATERIAL SHALL BE REMOVED AND REPLACED WITH SUITABLE MATERIAL.

CONCRETE SLAB WITH #4 REBAR
18" O.C. EACH WAY



NOTE:
AGGREGATE BASE COURSE COMPACTED TO NO LESS THAN 95% OF ASTM D-698 T-180 MAXIMUM DENSITY. SEE DETAILS FOR BASE THICKNESS. THE TOP 6 INCHES OF SUBGRADE UNDER THE AGGREGATE BASE COURSE SHALL BE COMPACTED TO NO LESS THAN 95% OF MAXIMUM DENSITY. ALL SATURATED OR UNSTABLE SUBGRADE MATERIAL SHALL BE REMOVED AND REPLACED WITH SUITABLE MATERIAL.

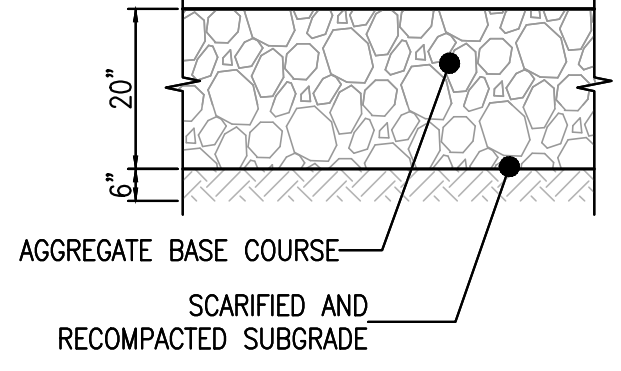
1 CONCRETE PAVEMENT SECTION
N.T.S.



NOTE:
ALL THICKNESS SHOWN ARE MINIMUM COMPACTED MATERIAL WHICH SHALL BE REVIEWED AND APPROVED BY GEOTECHNICAL ENGINEER.

2 ASPHALT PAVEMENT (02510-001)
N.T.S.

STONE PAVEMENT SLOPE
REFER TO NOTE 2.



3 GRAVEL PAVEMENT
N.T.S.

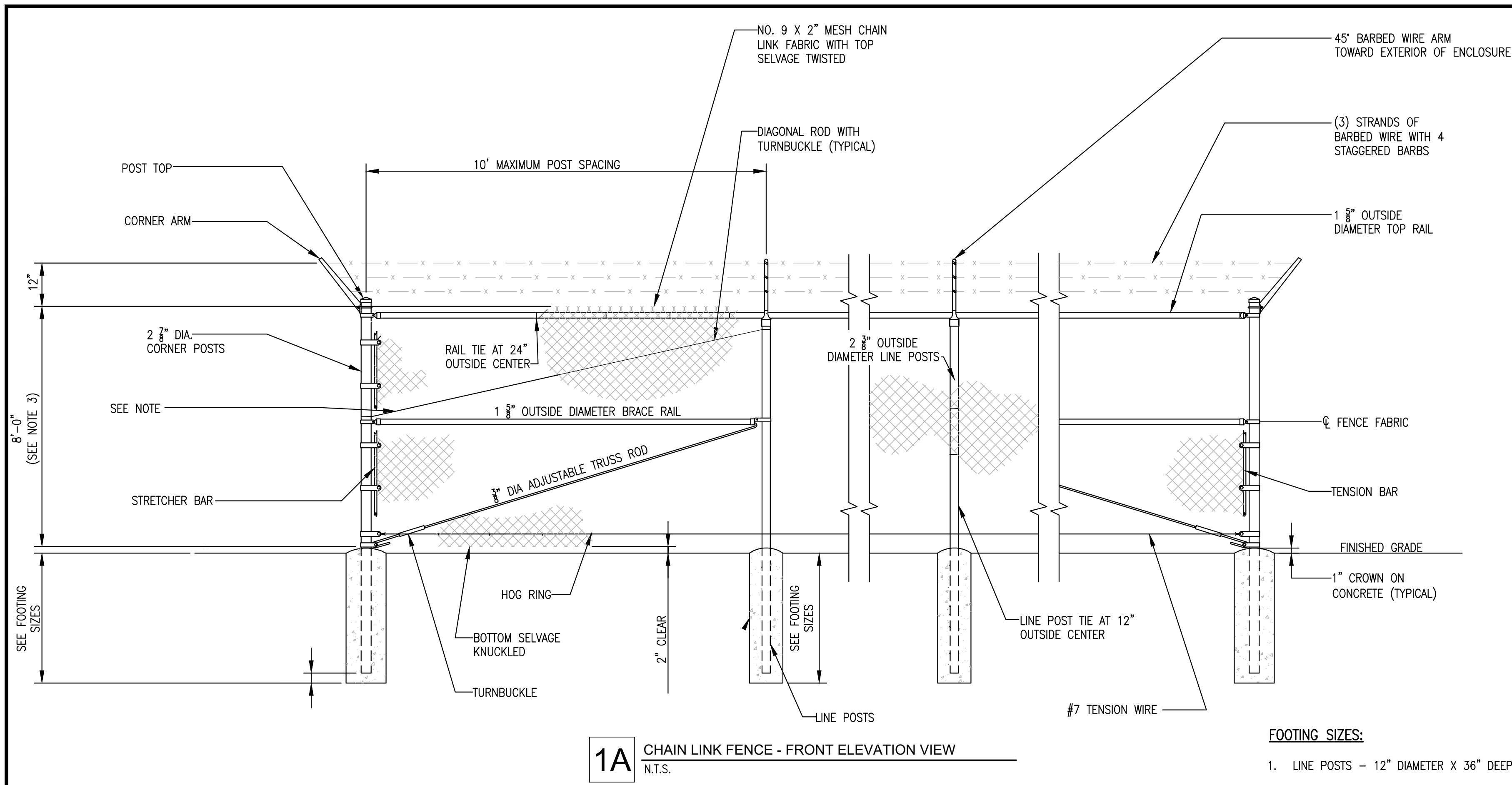
FOR REVIEW - NOT FOR CONSTRUCTION

Concept Plan
**FedEx Ground Facility
Langford**
 Centre Mountain Business Park
 Combined Keycorp 503 And Beecher Bay 310 Lot

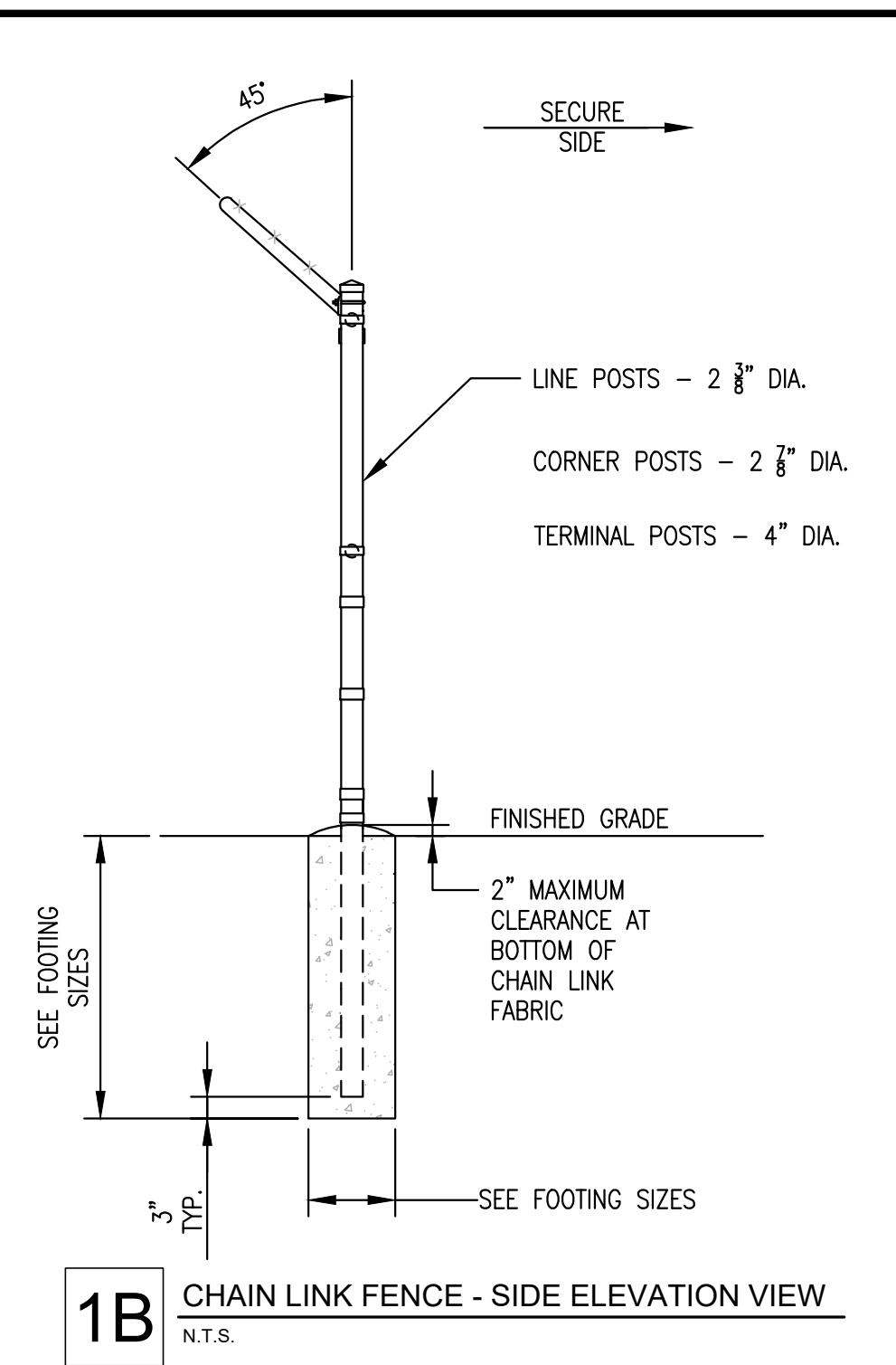
NO.	REVISION	DATE	BY
1	REVISED PER FEDEX COMMENTS	10/25/23	JST
2	REVISED PER FEDEX COMMENTS	07/25/24	JST
3	REVISED BY ON POINT PROJECT ENGINEERS	07/22/24	NUC

PROJECT NO: F23-069
 DATE: 07/28/2023
 F23-069 concept.dwg
 ~SHEET~
1 OF 6

Langford, British Columbia



1A CHAIN LINK FENCE - FRONT ELEVATION VIEW
N.T.S.



1B CHAIN LINK FENCE - SIDE ELEVATION VIEW
N.T.S.

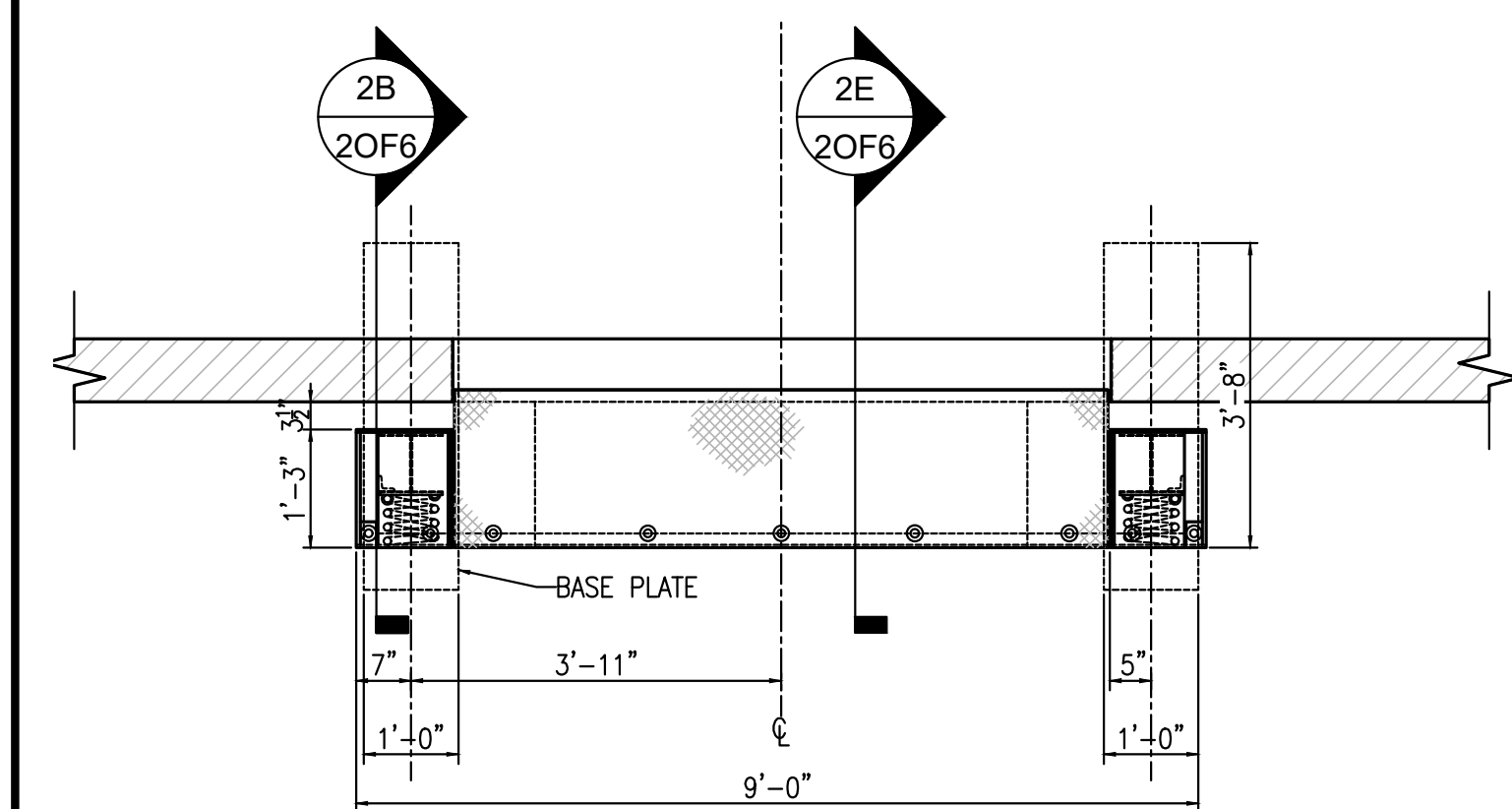
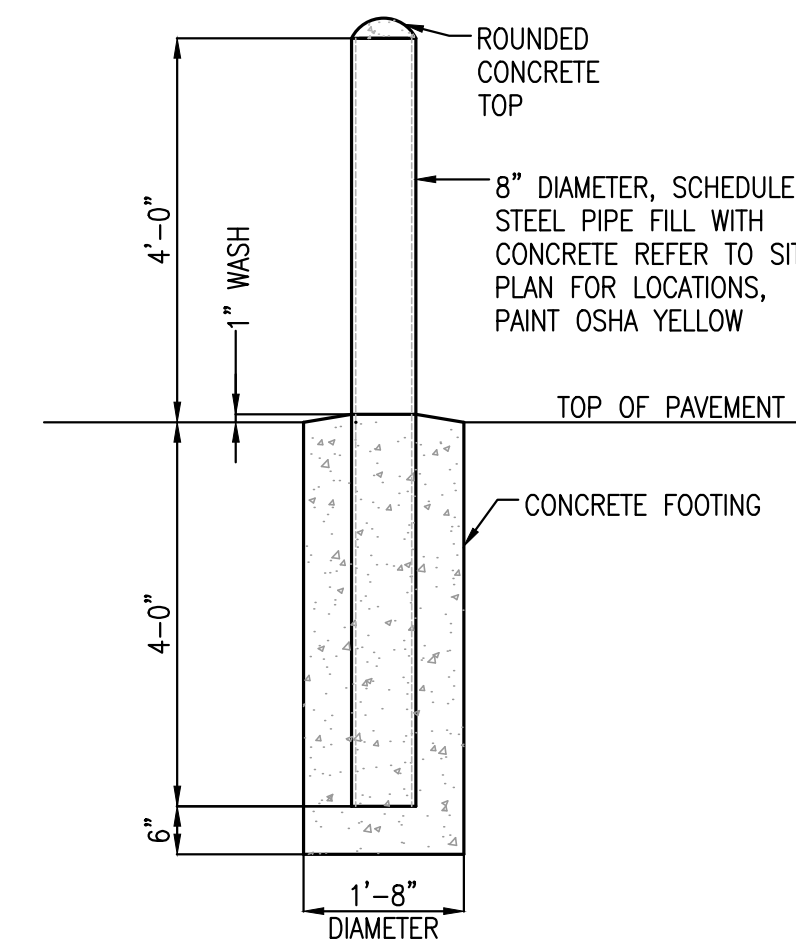
NOTES:

1. TEMPORARY SECURITY FENCE TO BE INSTALLED WITHOUT BARBED WIRE IF APPLICABLE.
2. POST BRACES SHALL BE PROVIDED AT EACH GATE, CORNER, AND END POSTS, WHERE FENCE RUNS OF 300 FEET OR MORE TERMINATE AT THE POST, SECOND DIAGONAL ROD SHALL BE INSTALLED AS SHOWN.
3. WHEN BARBED WIRE IS NOT PERMITTED BY LOCAL AHJ (AUTHORITY HAVING JURISDICTION), 8'-0" HIGH CHAIN LINK FENCE SHALL BE PROVIDED. IN THE EVENT LOCAL AHJ DOES NOT PERMIT CHAIN LINK FENCE, A PROPOSED FENCING SOLUTIONS MUST BE APPROVED BY FEDEX GROUND SECURITY GROUP.

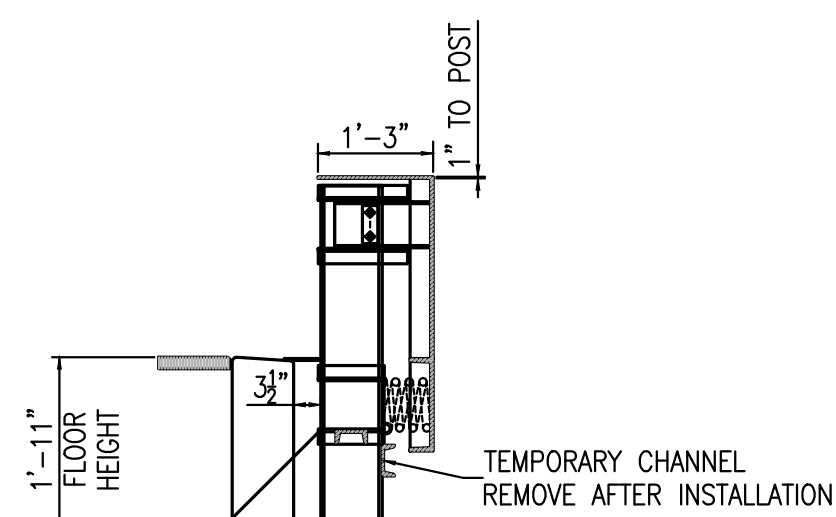
FOOTING SIZES:

1. LINE POSTS - 12" DIAMETER X 36" DEEP
2. CORNER AND TERMINAL POSTS - 12" DIAMETER X 42" DEEP
3. GATE POSTS - 24" DIAMETER X 48" DEEP
4. VERIFY HEIGHT RESTRICTIONS WITH LOCAL AUTHORITY HAVING JURISDICTION

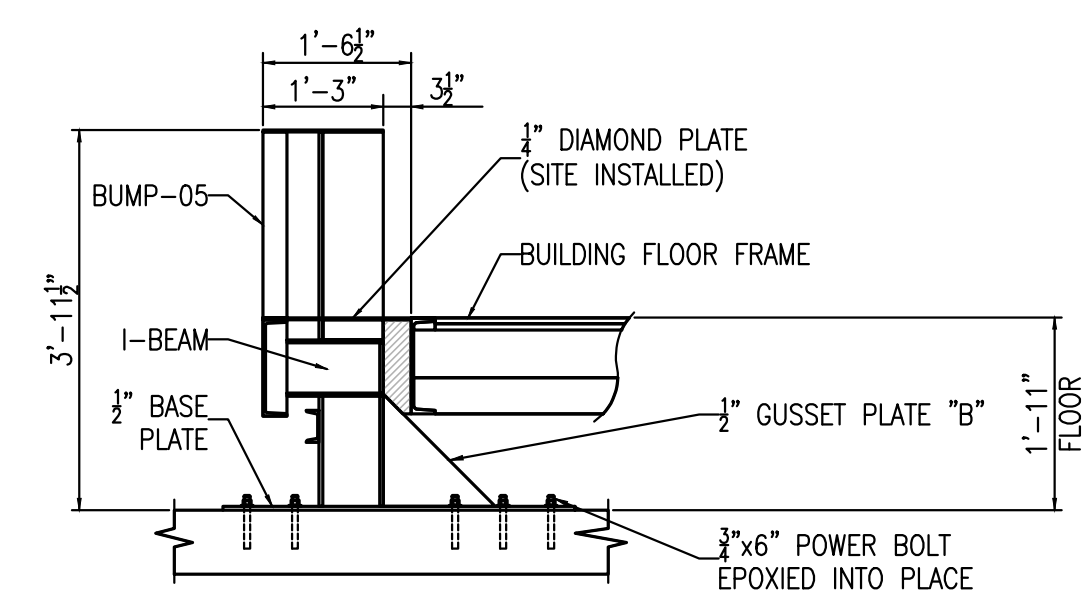
3 8" BOLLARD DETAIL (02870-002)
N.T.S.



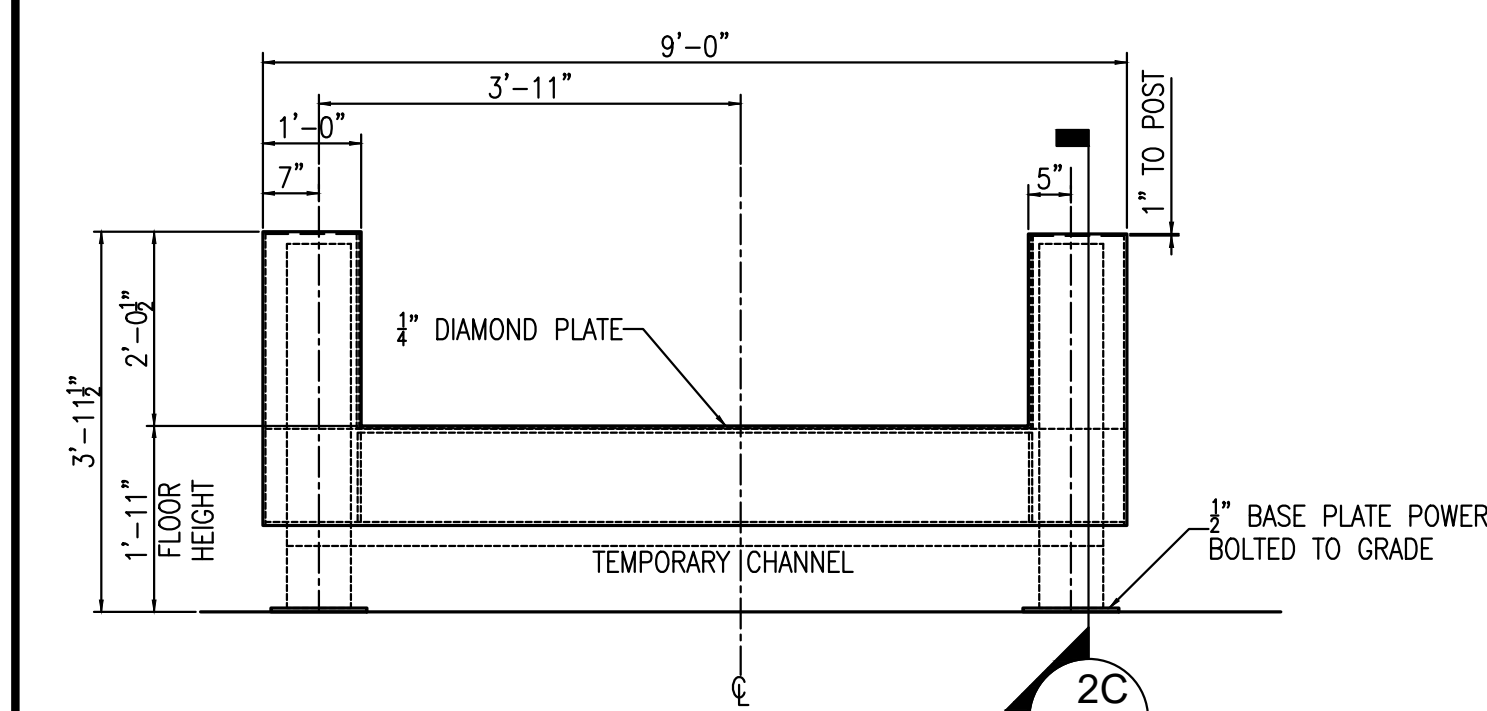
2A SURFACE MOUNTED BUMP-05 PLAN
N.T.S.



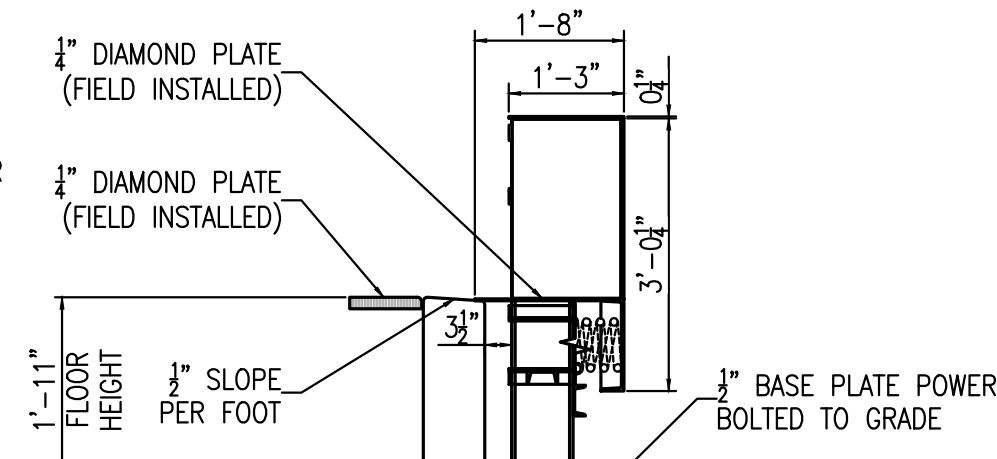
2B SECTION 'A' DETAIL
N.T.S.



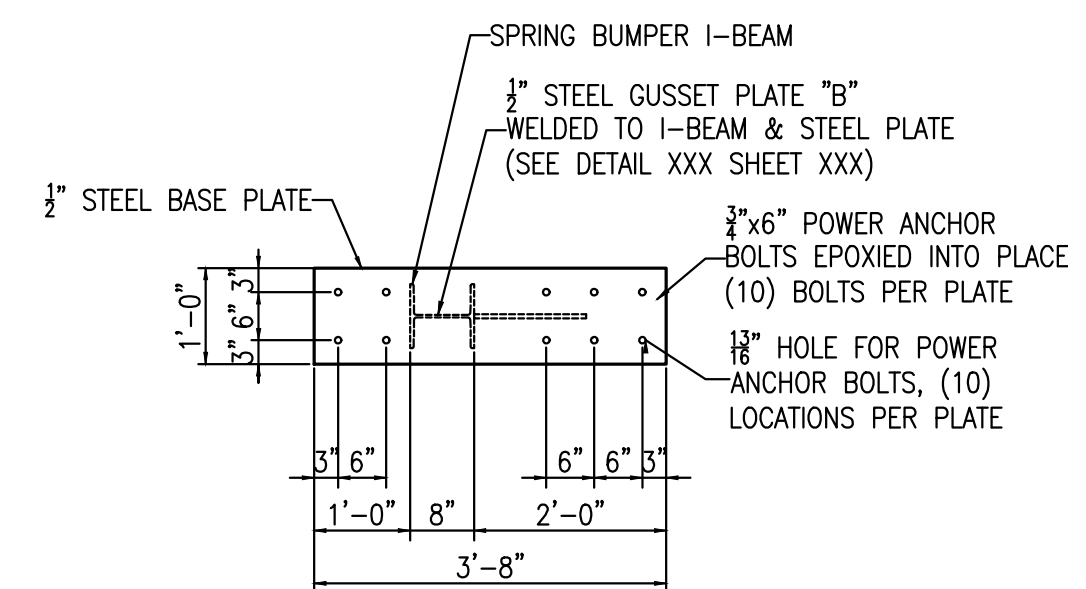
2C SPRING BUMPER-05 DETAIL SECTION 'C'
N.T.S.



2D SURFACE MOUNTED BUMP-05 TYPICAL ELEVATION
N.T.S.



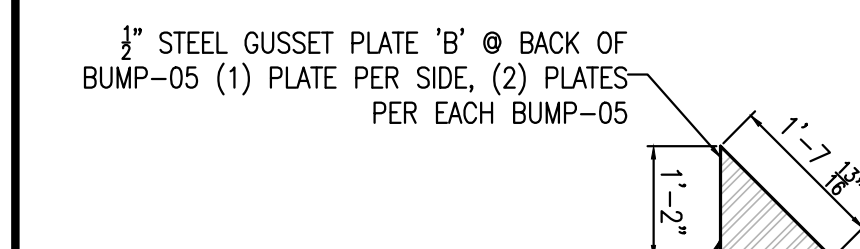
2E SECTION 'B' DETAIL
N.T.S.



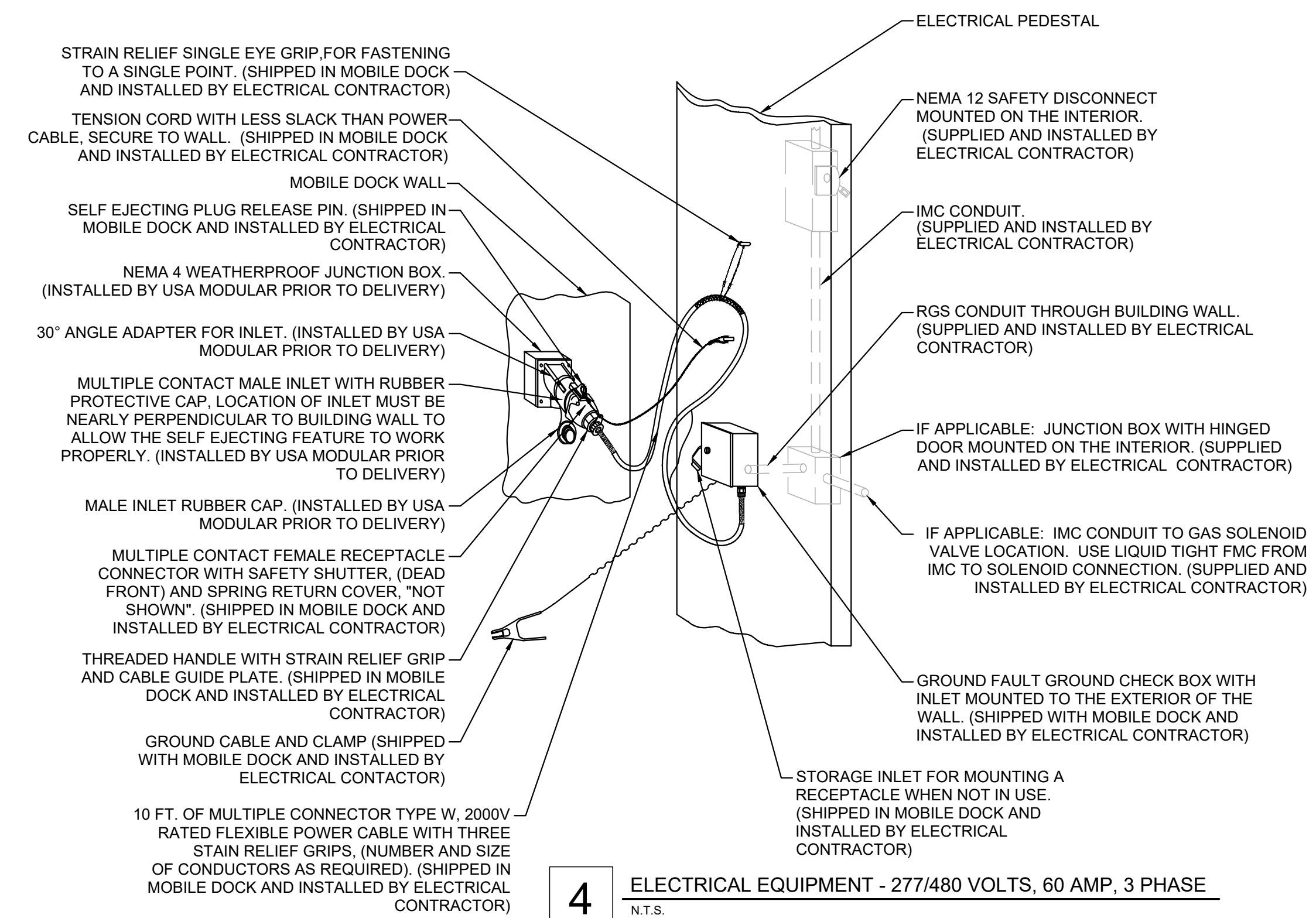
2F BASE PLATE DETAIL BUMP-05 (TOP VIEW)
N.T.S.

NOTE:
WHEN POSTS ARE IN CONFLICT WITH BUILDING, BLOCK OUT FOOTING

2 DOCKZILLA BUMPER DETAIL
N.T.S.



2G GUSSET PLATE 'B' DETAIL (SIDE VIEW)
N.T.S.

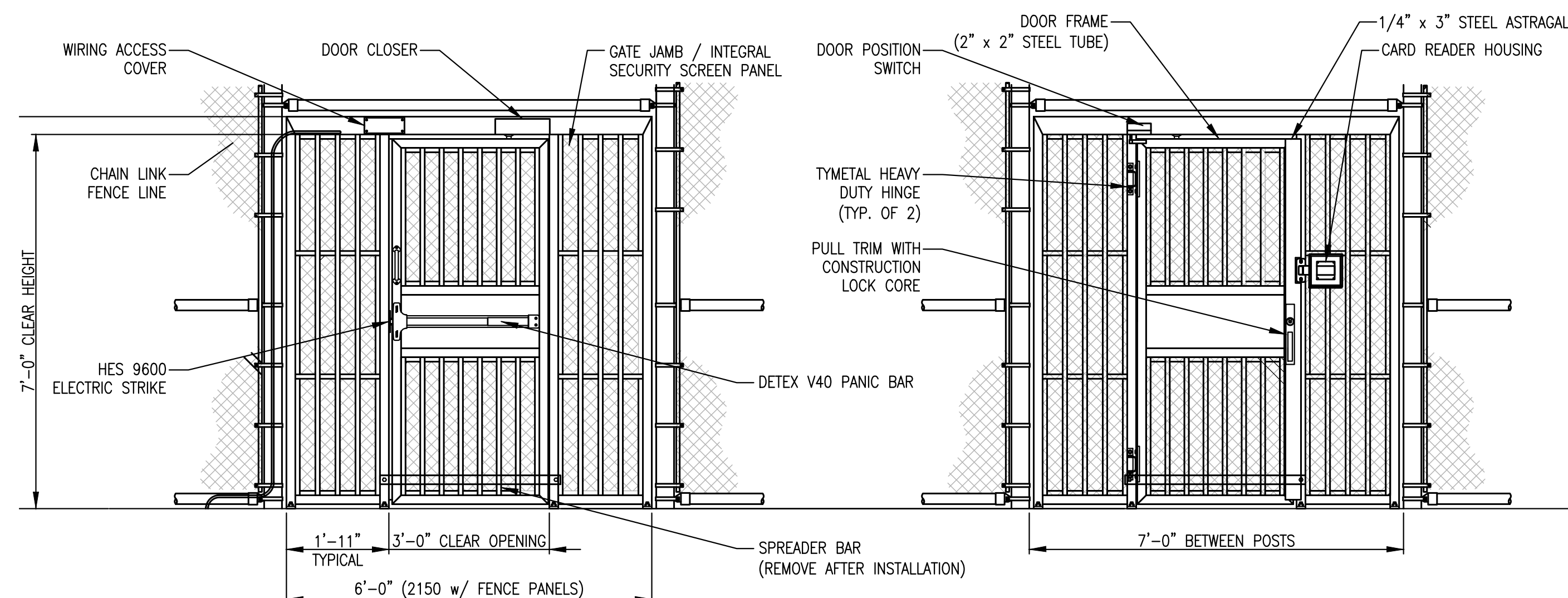


4 ELECTRICAL EQUIPMENT - 277/480 VOLTS, 60 AMP, 3 PHASE
N.T.S.

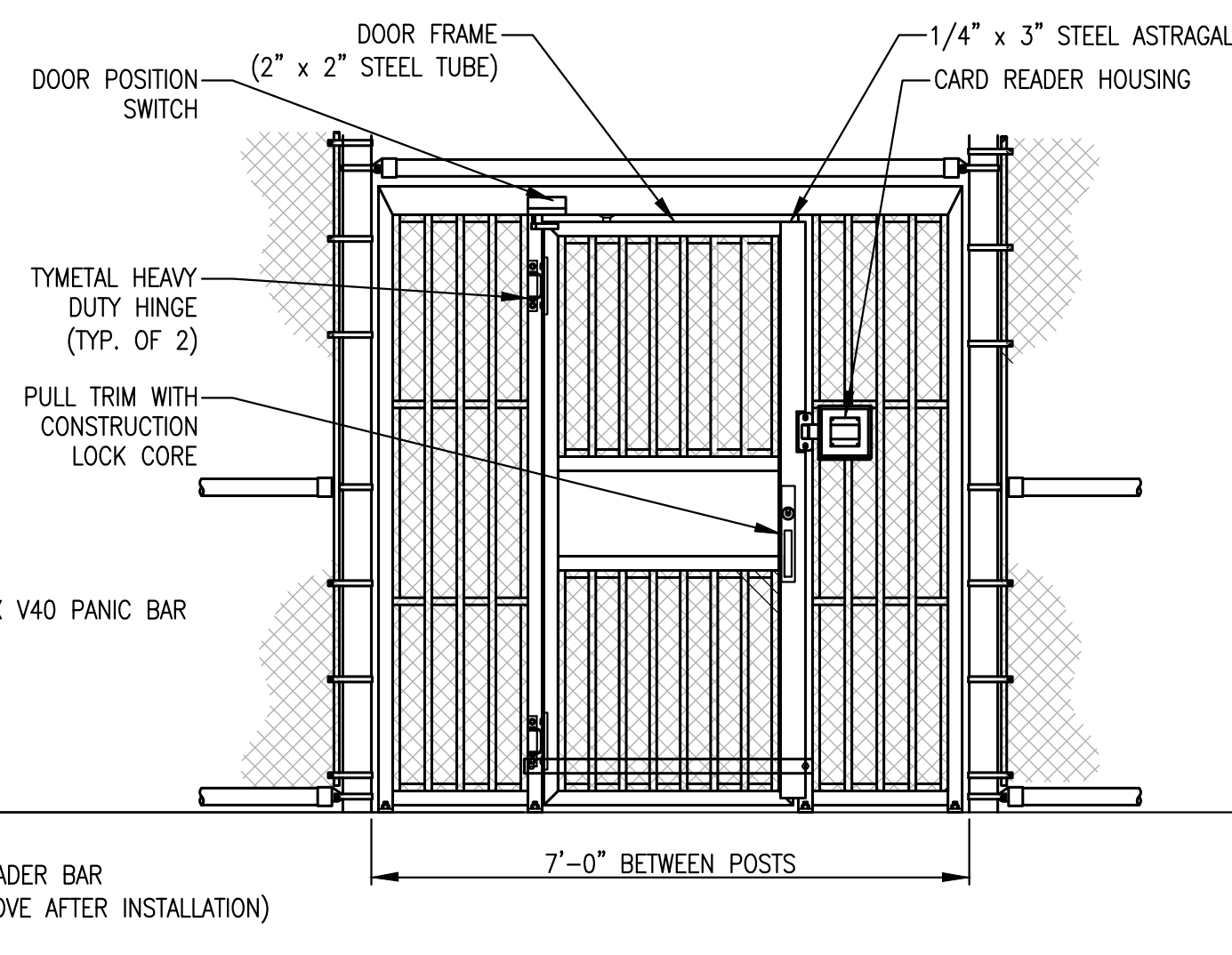
FOR REVIEW - NOT FOR CONSTRUCTION

REV	DATE	BY	COMMENT
1	10/25/23	JST	REVISION PER FEDEX COMMENTS
2	07/25/24	JST	REVISION PER FEDEX COMMENTS

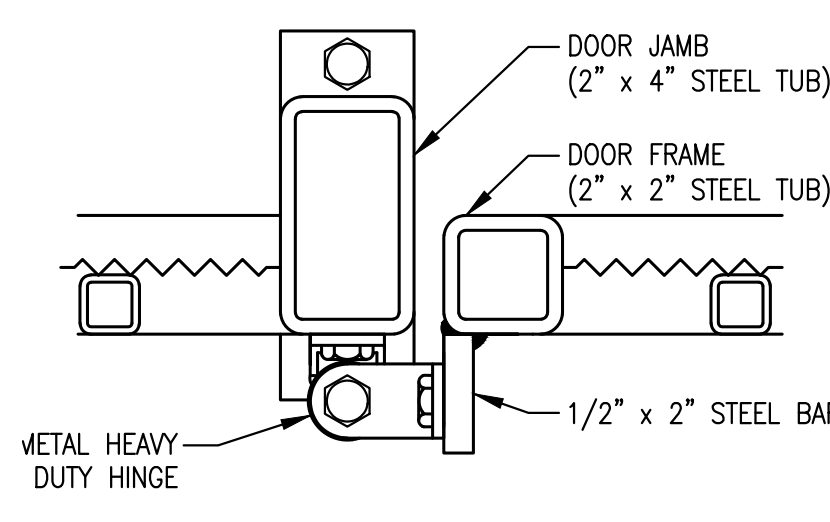
Details
FedEx Ground Facility
Langford
 Centre Mountain Business Park
 Combined Keycorp 503 And Beecher Bay 310 Lot



1A PEDESTRIAN GATE ELEVATION - SECURE SIDE
N.T.S.

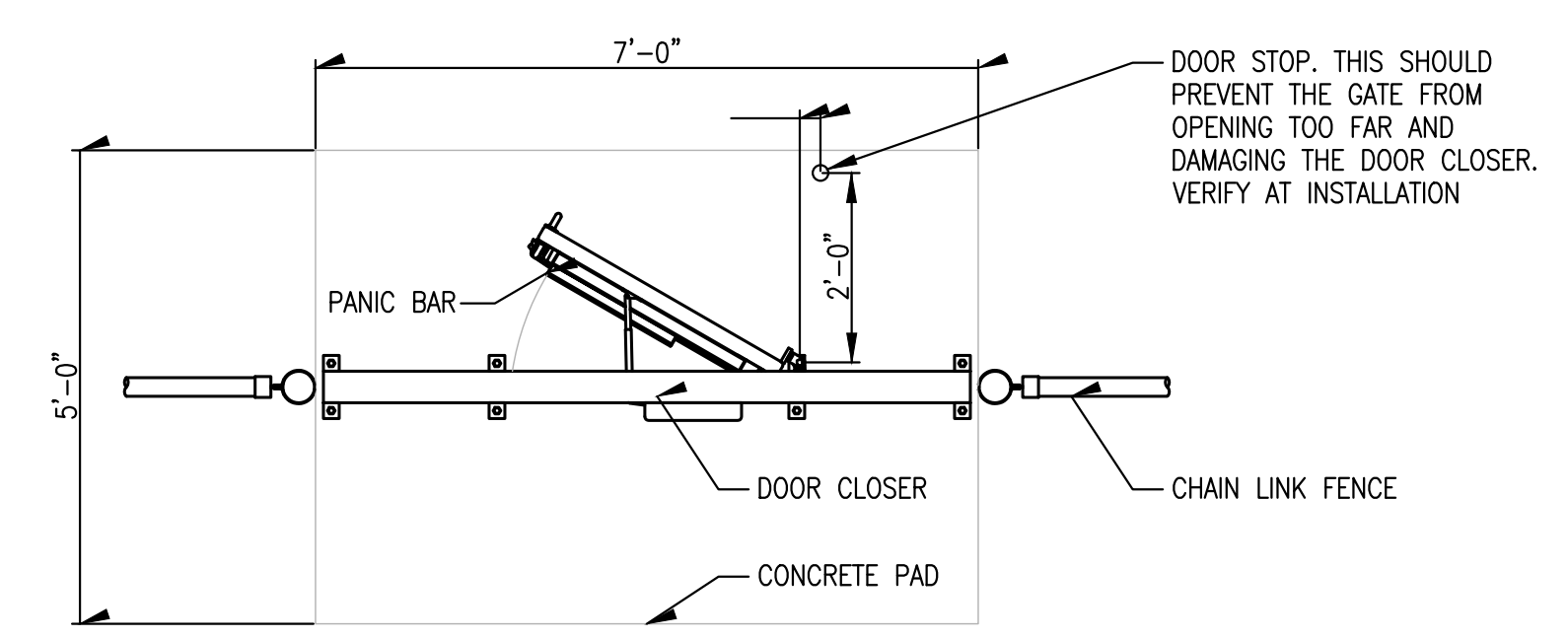


1B PEDESTRIAN GATE ELEVATION - UNSECURED SIDE
N.T.S.



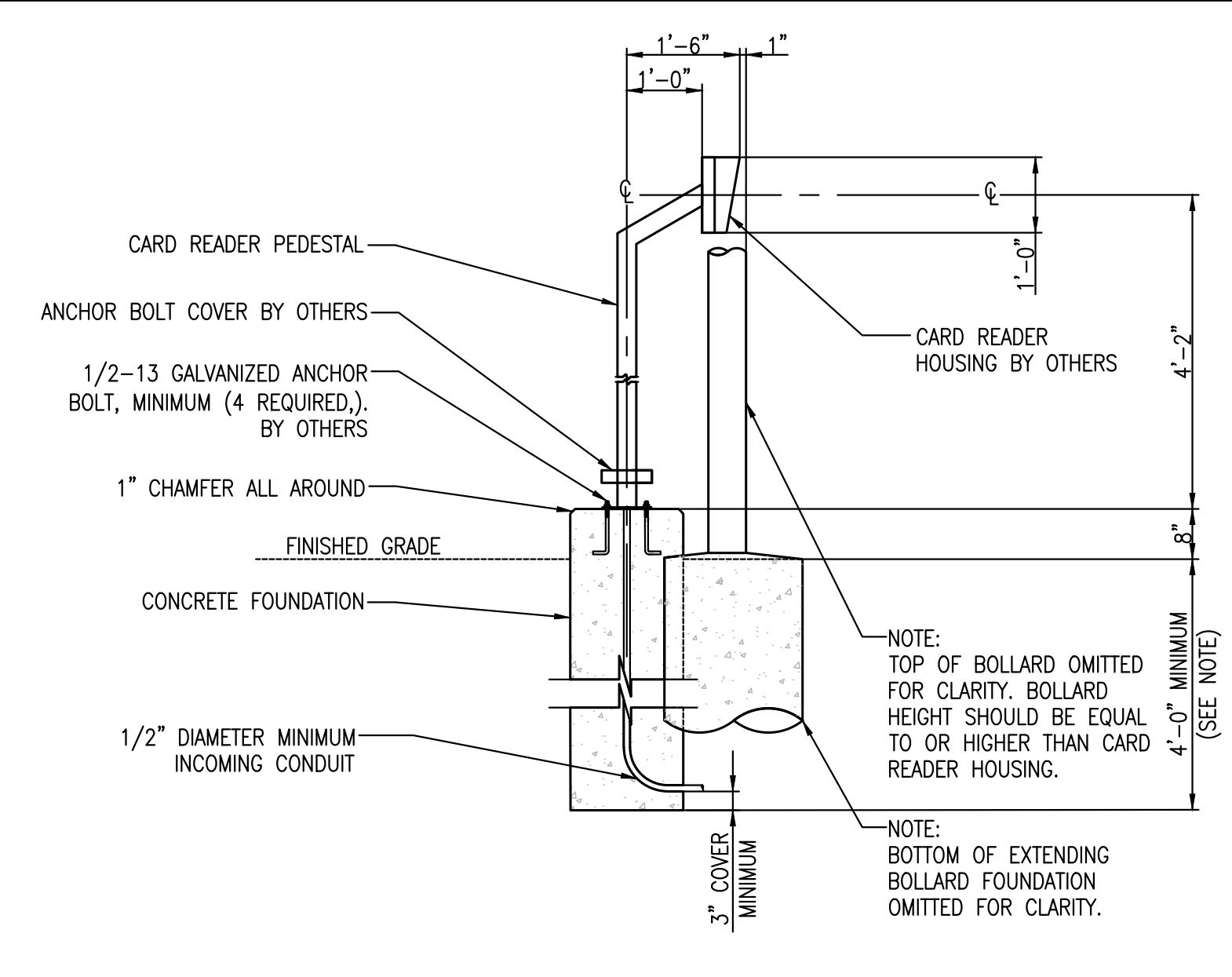
1C HINGE DETAIL
N.T.S.

- NOTES:
1. THE OPENING IN THE FENCE LINE SHALL BE BUILT TO ACCOMMODATE THE DOOR JAMB PER THE FEDEX SPECIFICATIONS.
 2. PANIC BAR IS A DETEX MODEL V40 WITH DETEX O3AN TRIM AND HES 9600 ELECTRIC STRIKE.
 3. GATE FRAME AND INTEGRAL SECURITY SCREEN PANELS WILL BE FILLED WITH 1" SQ. STEEL PICKETS @4" O.C. AND EXPANDED METAL MESH.
 4. GATE JAMB AND GATE PANEL ARE HOT DIP GALVANIZED.

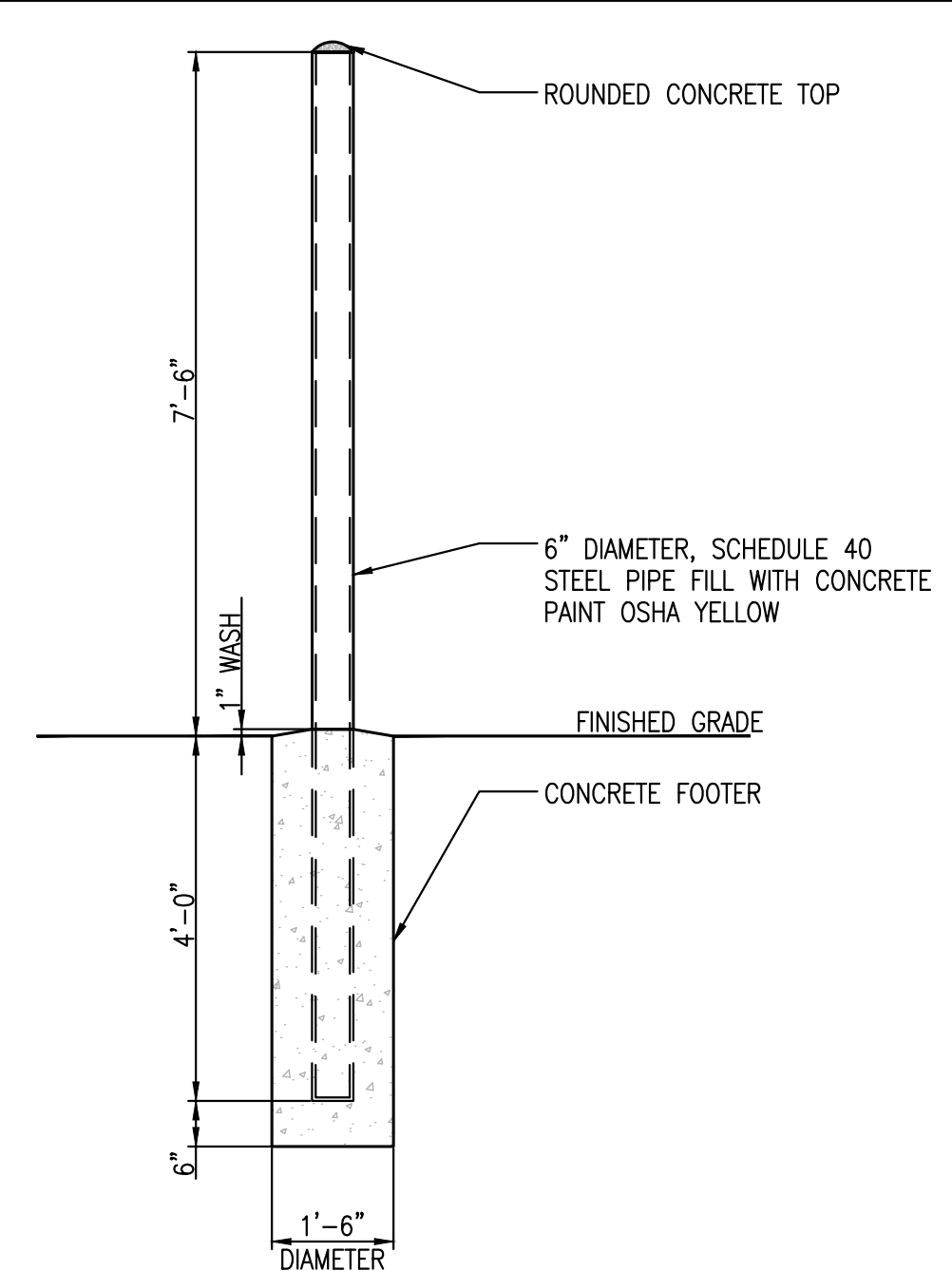


1D PEDESTRIAN GATE PLAN VIEW
N.T.S.

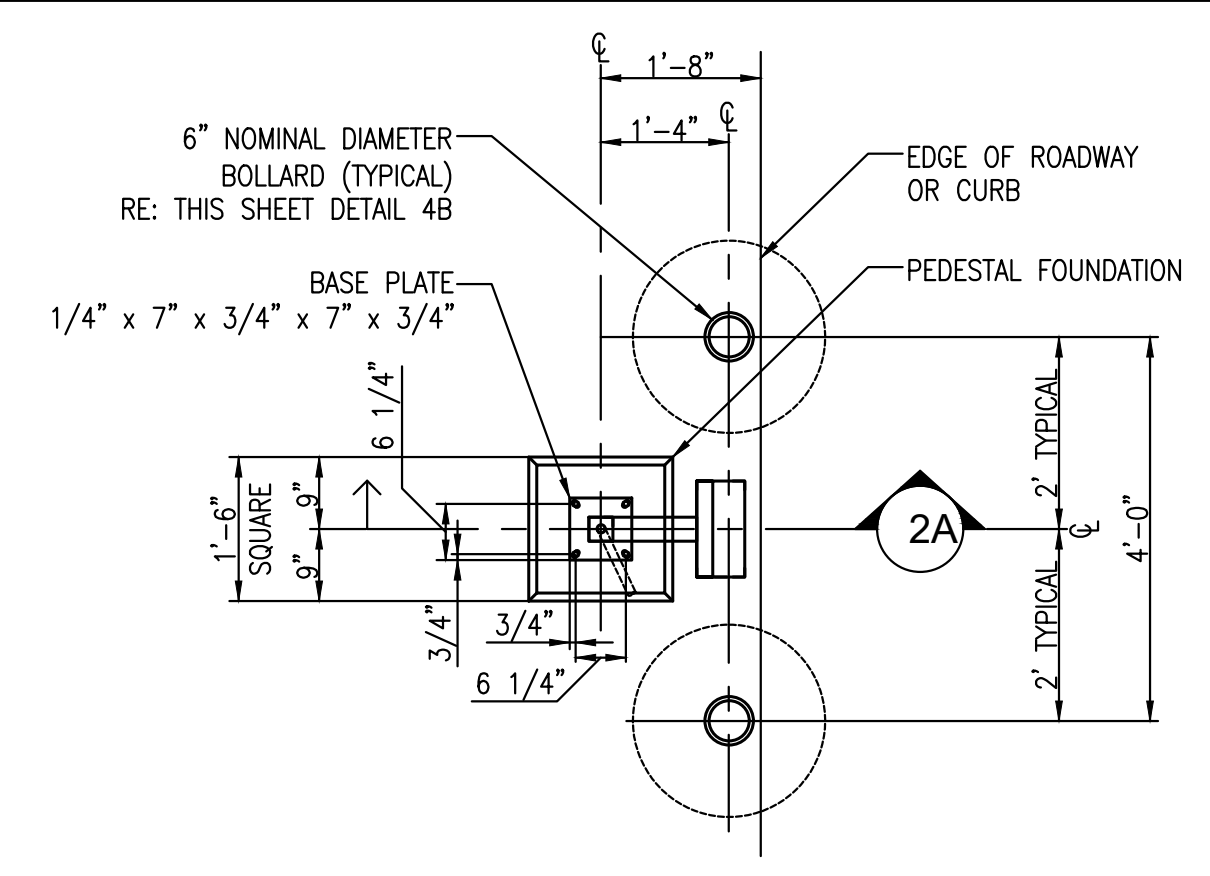
1 PEDESTRIAN GATE (02830-038)
N.T.S.



2A GATE ENTRY ACCESS PEDESTAL - DUAL HEIGHT - SECTION
N.T.S.



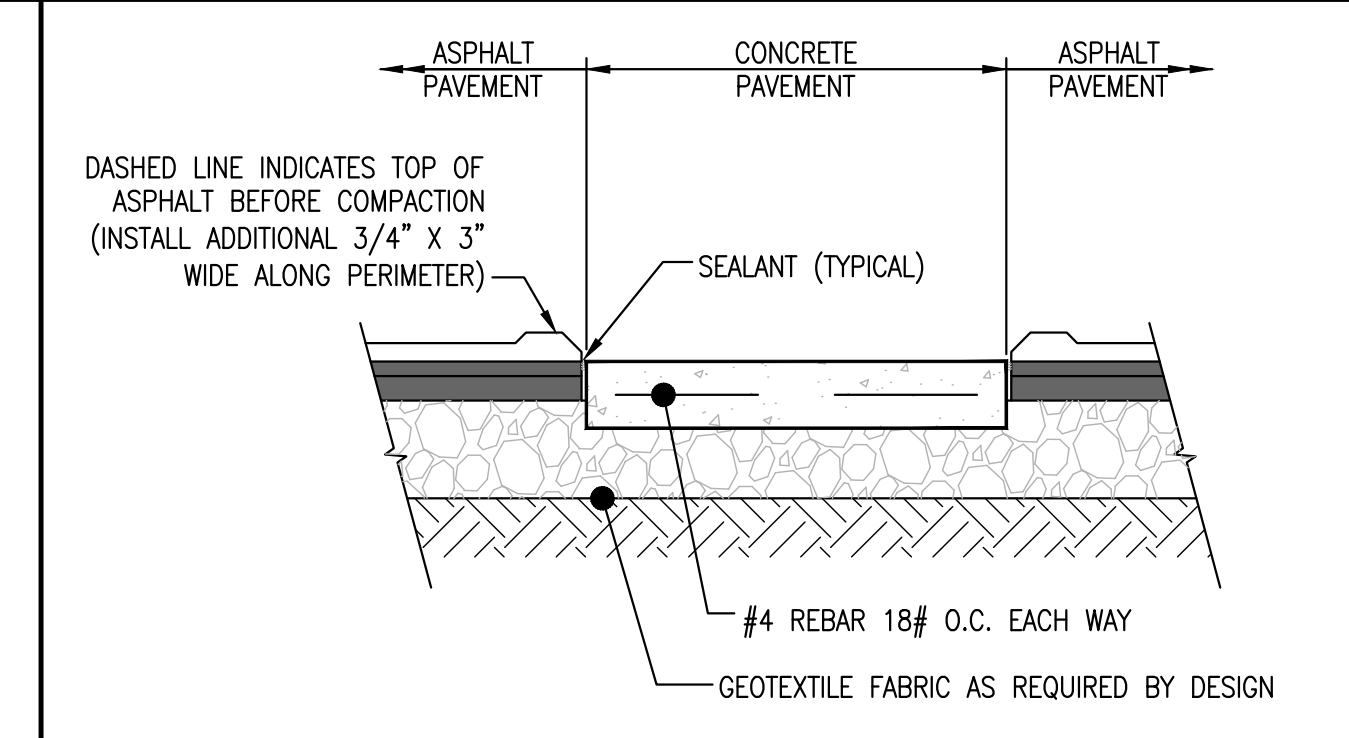
2B 6" NOMINAL DIA. EXTENDED BOLLARD SECTION
N.T.S.



2C GATE ENTRY ACCESS PEDESTAL PLAN
N.T.S.

- NOTES:
1. THE MINIMUM DEPTH FOR THE PEDESTAL FOUNDATION SHALL BE 4'-0" BELOW THE FINISHED GRADE ELEVATION AND SHALL BE DESIGNED IN ACCORDANCE WITH THE LOCAL SOIL CONDITIONS AND LOCAL CODES. SAID DESIGN SHALL, WITHOUT EXCEPTION, BE REVIEWED BY LOCAL ENGINEER.
 2. CONDUIT SHALL EXIT FOUNDATION BELOW FROST LINE.
 3. PEDESTAL ARRANGEMENT PROVIDED BY FXG PPS DEPARTMENT AND TYCO-IS

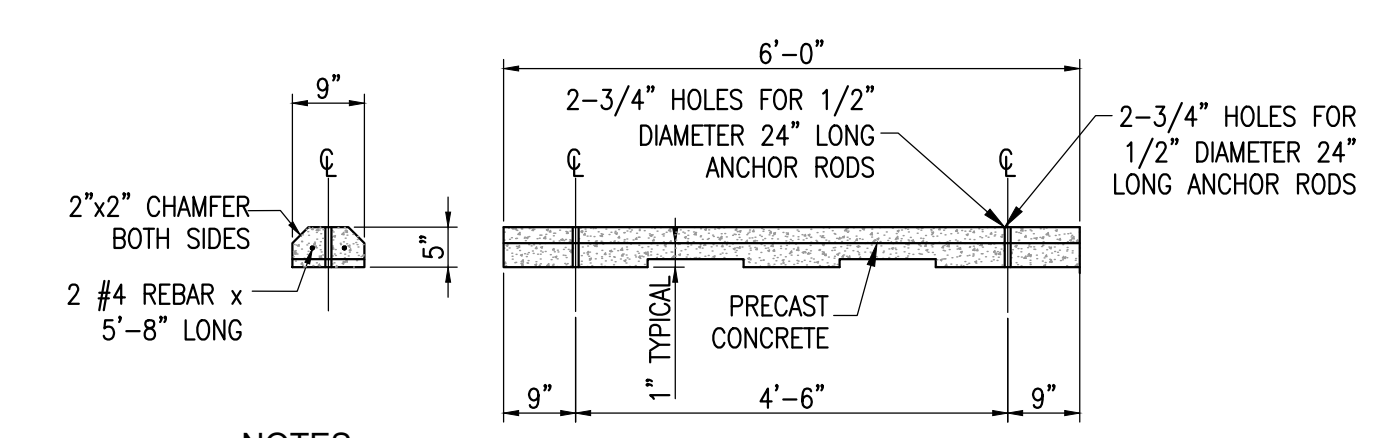
2 GATE ENTRY ACCESS PEDESTAL (02830-015)
N.T.S.



3 ASPHALT AT CONCRETE SECTION (02510-007)
N.T.S.

FedEx Ground Paint Schedule	
(FOR ADDITIONAL PAINT SCHEDULES, CONTRACTOR SHALL REFERENCE FXG SPECIFICATIONS MANUAL, DIVISION 2 - SITE WORK) SW = SHERWIN WILLIAMS	
Dock Sill Plates	SW - 7069 - Iron Ore Semi-gloss Except top surface shall be: SW - 4084 - Safety Yellow
Independent Bumper	SW - 7069 - Iron Ore Semi-gloss Except front surface of bumper and legs shall be: SW - 4084 - Safety Yellow
Stairs & Bollards	SW - 4084 - Safety Yellow
Interior Structural Steel	Pro Industrial Zero VOC Acrylic Coating Gloss (B66-600 Series)
Egress Path Striping	SW - 4084 - Safety Yellow
Pavement Striping	S-W, Traffic & Zone Products, SETFAST Acrylic Waterborne Traffic Marking Paint;
* White: Pedestrian & Auto Parking	TM266 - White
* Yellow: Truck Parking, Crosswalks & other Safety or hatched areas	TM227 - Yellow
* Blue: Handicapped Parking	TM266 - Tinted Blue SW - 4084 - Safety Red
	Malignance, Inc., FASS-Striping Paint, Manufacturer's Standard: 3FX5-W - Snow White 3FS5-Y - Traffic White 3FXBU - Blue

4 PAINT SCHEDULE
N.T.S.



- NOTES:
1. CONCRETE AT OWNED FACILITIES
 2. RESIN AT BTS

5 PARKING BLOCK DETAIL
N.T.S.

Langford, British Columbia

FOR REVIEW - NOT FOR CONSTRUCTION

REV. DATE	BY	COMMENT
10/25/23	JST	REVISED PER FEDEX COMMENTS
07/25/24	JST	REVISED PER FEDEX COMMENTS

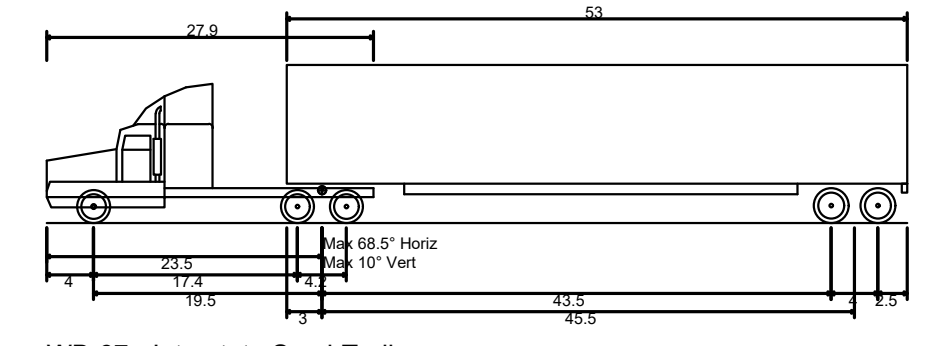
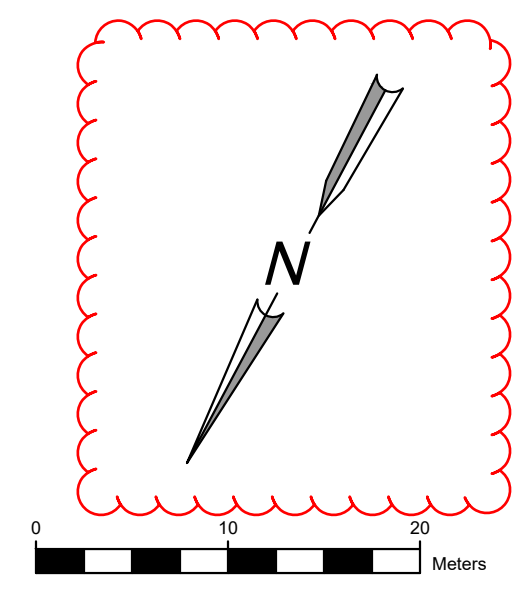
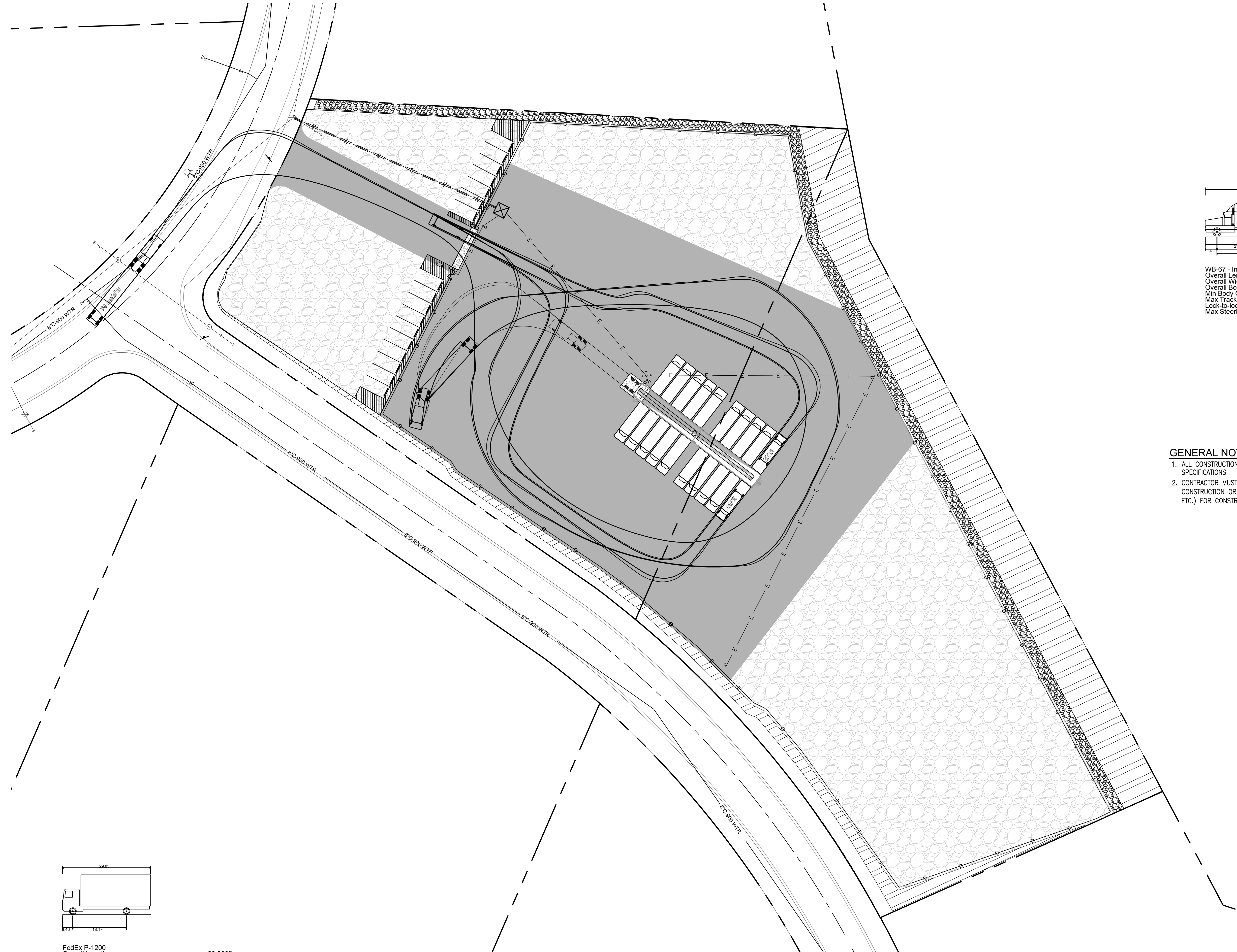
Details
FedEx Ground Facility
Langford
 Centre Mountain Business Park
 Combined Keycorp 503 And Beecher Bay 310 Lot

PROJECT NO: F23-069
DATE: 07/28/2023

F23-069 concept.dwg

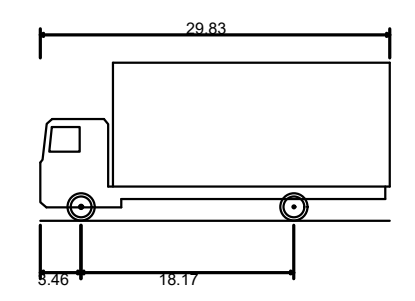
~SHEET~

3 OF 6



WB-67 - Interstate Semi-Trailer
 Overall Length 73.50ft
 Overall Width 8.50ft
 Overall Body Height 13.50ft
 Min Body Ground Clearance 1.334ft
 Max Track Width 8.50ft
 Lock-to-lock time 6.00s
 Max Steering Angle (Virtual) 28.40°
WB-67 SEMI-TRUCK PROFILE
 N.T.S.

- GENERAL NOTES:**
1. ALL CONSTRUCTION TO CONFORM TO THE CITY OF LANGFORD BUILDING DEPARTMENT STANDARDS AND SPECIFICATIONS
 2. CONTRACTOR MUST CONTACT CITY OF LANGFORD TRAFFIC OPERATIONS SUPERVISOR PRIOR TO CONSTRUCTION OR PLACEMENT OF TRAFFIC CONTROL DEVICES/FEATURES (STRIPING SIGNALS, MEDIANS, ETC.) FOR CONSTRUCTION IN THE RIGHT OF WAY.



FedEx P-1200
 Overall Length 29.83ft
 Overall Width 8.00ft
 Overall Body Height 13.50ft
 Min Body Ground Clearance 1.134ft
 Track Width 6.67ft
 Lock-to-lock time 6.00s
 Max Steering Angle (Virtual) 40.00°
FEDEX P-1200 PROFILE
 N.T.S.

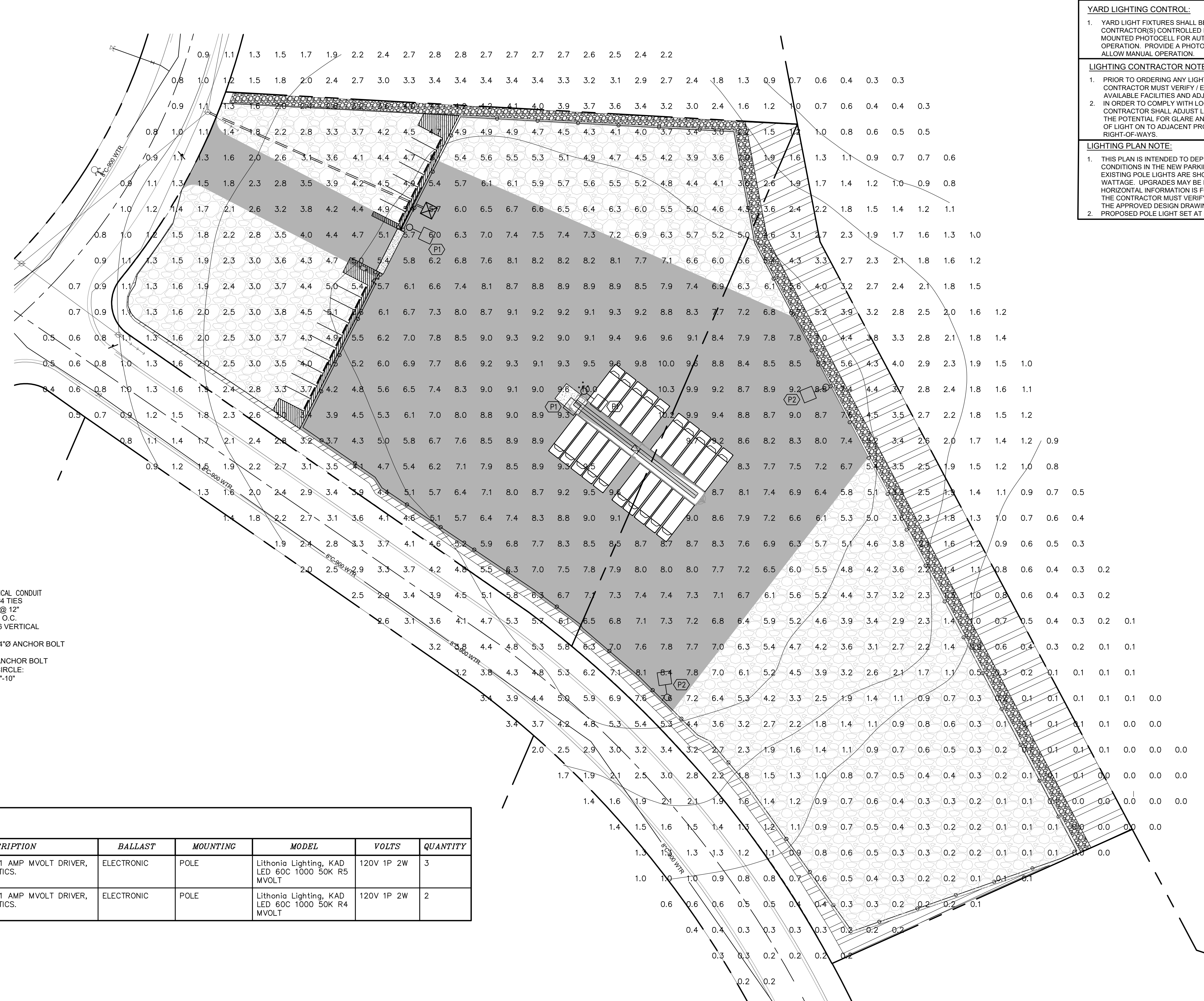
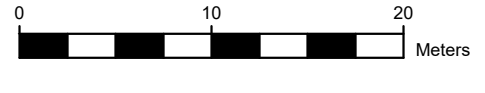
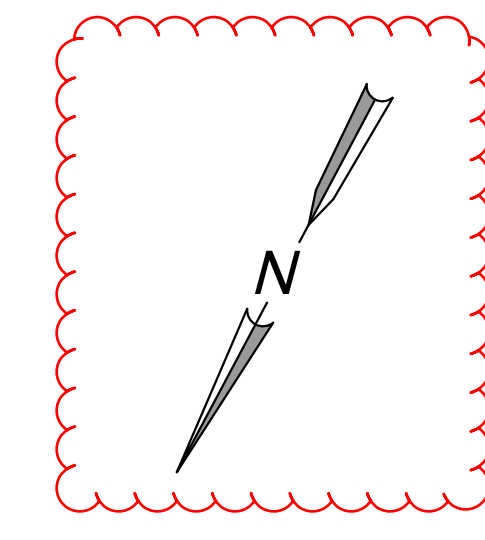
TRUCK TURN SITE PLAN
 SCALE: 1:30

FOR REVIEW - NOT FOR CONSTRUCTION

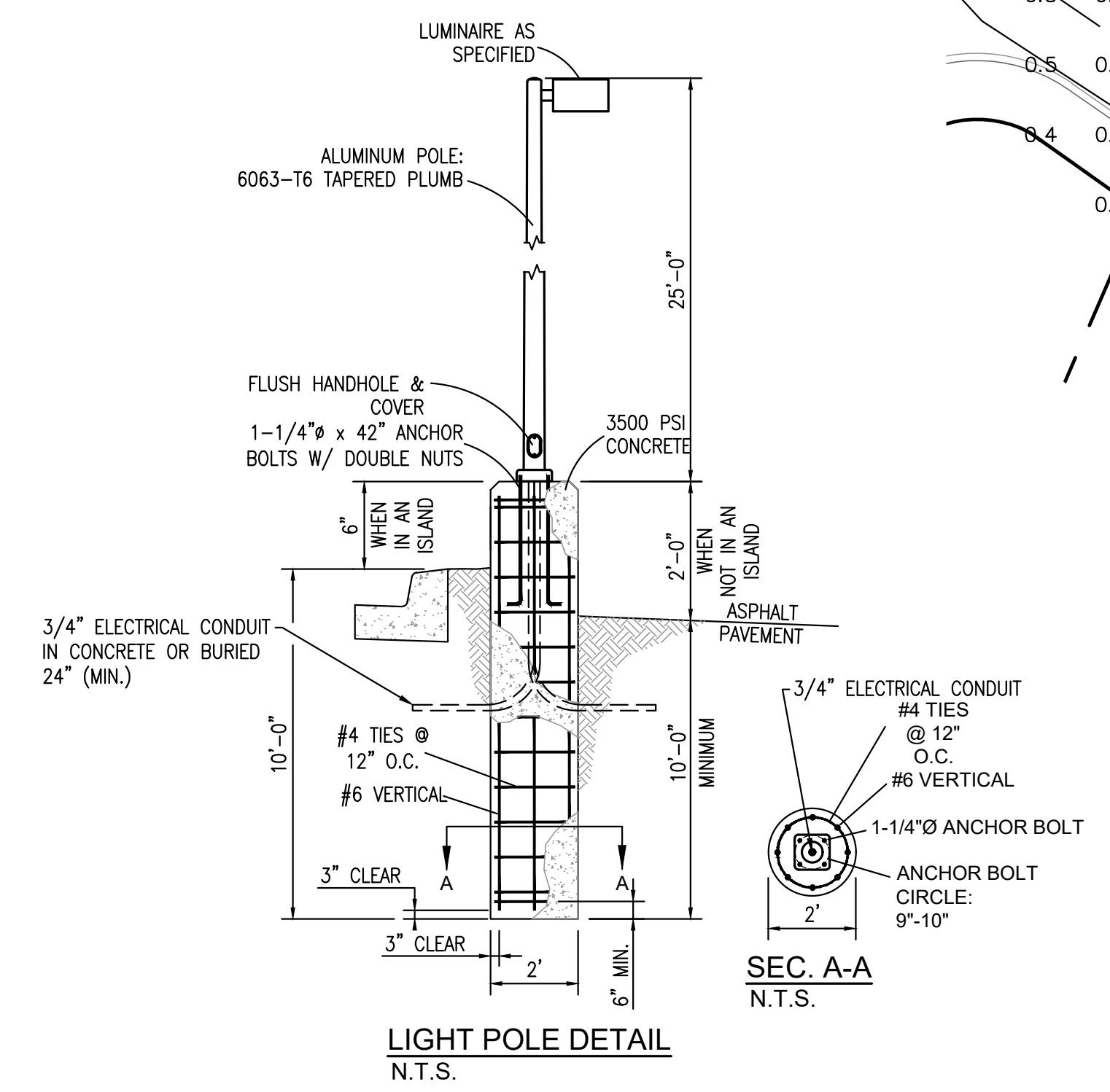
NO.	REVISED BY	DATE	REVISION	BY
1	07/22/24		REVISED BY ON POINT PROJECT ENGINEERS	NOC
2	07/25/24		REVISED PER FEDEX COMMENTS	JST
1	10/25/23		REVISED PER FEDEX COMMENTS	JST
				BY

Truck Turn Site Plan
FedEx Ground Facility
Langford
 Centre Mountain Business Park
 Combined Keycorp 503 And Beecher Bay 310 Lot

Langford, British Columbia



- YARD LIGHTING CONTROL:**
- YARD LIGHT FIXTURES SHALL BE OPERATED USING CONTRACTOR(S) CONTROLLED FROM ONE BUILDING MOUNTED PHOTOCELL FOR AUTOMATIC DUSK TO DAWN OPERATION. PROVIDE A PHOTOCELL BYPASS SWITCH TO ALLOW MANUAL OPERATION.
- LIGHTING CONTRACTOR NOTE:**
- PRIOR TO ORDERING ANY LIGHTING RELATED ITEMS - CONTRACTOR MUST VERIFY / ESTABLISH EXISTING AVAILABLE FACILITIES AND ADJUST ACCORDINGLY.
 - IN ORDER TO COMPLY WITH LOCAL ORDINANCES, THE CONTRACTOR SHALL ADJUST LIGHT FIXTURES TO MINIMIZE THE POTENTIAL FOR GLARE AND UNNECESSARY DIFFUSION OF LIGHT ON TO ADJACENT PROPERTIES OR INTO PUBLIC RIGHT-OF-WAYS.
- LIGHTING PLAN NOTE:**
- THIS PLAN IS INTENDED TO DEPICT PROPOSED LIGHTING CONDITIONS IN THE NEW PARKING AREAS ONLY. THE EXISTING POLE LIGHTS ARE SHOWN WITH ASSUMED WATTAGE. UPGRADES MAY BE NECESSARY. ADDITIONAL HORIZONTAL INFORMATION IS FOR REFERENCE ONLY AND THE CONTRACTOR MUST VERIFY ALL INFORMATION WITH THE APPROVED DESIGN DRAWINGS.
 - PROPOSED POLE LIGHT SET AT 27'.



LUMINAIRE SCHEDULE

CALLOUT	SYMBOL	LAMP	DESCRIPTION	BALLAST	MOUNTING	MODEL	VOLTS	QUANTITY
P1		(1) 50K P5	KAD LED, 60 LED, 1 AMP MVOLT DRIVER, 5000K, TYPE 5 OPTICS.	ELECTRONIC	POLE	Lithonia Lighting, KAD LED 60C 1000 50K R5 MVOLT	120V 1P 2W	3
P2		(1) 50K P4	KAD LED, 60 LED, 1 AMP MVOLT DRIVER, 5000K, TYPE 4 OPTICS.	ELECTRONIC	POLE	Lithonia Lighting, KAD LED 60C 1000 50K R4 MVOLT	120V 1P 2W	2

GENERAL PHOTOMETRIC SCHEDULE

AVERAGE FOOT-CANDLES	3.59
MAXIMUM FOOT-CANDLES	10.3
MINIMUM FOOT-CANDLES	0.0
MINIMUM TO MAXIMUM FC RATIO	0.00
MAXIMUM TO MINIMUM FC RATIO	334.81
AVERAGE TO MINIMUM FC RATIO	116.99

- GENERAL NOTES:**
- ALL CONSTRUCTION TO CONFORM TO THE CITY OF LANGFORD BUILDING DEPARTMENT STANDARDS AND SPECIFICATIONS
 - CONTRACTOR MUST CONTACT CITY OF LANGFORD TRAFFIC OPERATIONS SUPERVISOR PRIOR TO CONSTRUCTION OR PLACEMENT OF TRAFFIC CONTROL DEVICES/FEATURES (STRIPING SIGNALS, MEDIANS, ETC.) FOR CONSTRUCTION IN THE RIGHT OF WAY.
 - ALL DIMENSIONS ARE IN METERS UNLESS OTHERWISE INDICATED.
 - TRUCK LANDING AREA MUST BE LEVEL.

CONCEPT PLAN
SCALE: 1:10

FOR REVIEW - NOT FOR CONSTRUCTION

NO.	DATE	REVISION	BY
1	07/22/24	REVISED BY ON POINT PROJECT ENGINEERS	NOC
2	07/25/24	REVISED PER FEDEX COMMENTS	JST
1	10/25/23	REVISED PER FEDEX COMMENTS	JST
		COMMENT	BY

Photometric Lighting Plan
FedEx Ground Facility
Langford
 Centre Mountain Business Park
 Combined Keycorp 503 And Beecher Bay 310 Lot

FedEx
Ground
Langford, British Columbia

KAD LED LED Area Luminaire

Specifications

- EPA: 1.2 ft² (0.11 m²)
- Length: 17-1/2" (44.5 cm)
- Width: 17-1/2" (44.5 cm)
- Height: 2-1/8" (54.0 mm)
- Weight (max): 36 lbs. (16.4 kg)

Capable Luminaire

This item is an A+ capable luminaire, which has been designed and tested to provide consistent color appearance and system-level interoperability.

- All configurations of this luminaire meet the Acuity Brands' specification for chromatic consistency
- This luminaire is A+ Certified when ordered with DTL[®] controls marked by a **shaded background**. DTL DTL equipped luminaires meet the A+ specification for luminaire to photocontrol interoperability!
- This luminaire is part of an A+ Certified solution for ROAM*2 or XPoint™ Wireless control networks, providing out-of-the-box control compatibility with simple commissioning, when ordered with drivers and control options marked by a **shaded background**.

To learn more about A+, visit www.acuitybrands.com/details.

2. A+ Certified Solutions for ROAM require the order of one ROAM node per luminaire. Sold Separately. [Link to ROAM](#) [Link to DTL DTL](#)

Ordering Information

KAD LED	Series	LEDs	Drive current	ACCT	Color/basket	Voltage	Mounting	Shipped included	Shipped separately
KAD LED	20C	20 LEDs	530 mA	3000 K	R2 type I	MVOLT 277V		SPUMBAK Square pole universal mounting adaptor ¹	04' 4" arm DND12P Degree arm KMA Heat arm external fixture
KAD LED	30C	30 LEDs	700 mA	4000 K	R3 type II	120V ² 347V ³		SPUMBAK Round pole universal mounting adaptor ¹	06' 4" arm DND12P Degree arm KMA Heat arm external fixture
KAD LED	40C	40 LEDs	1000 mA	5000 K	R4 type IV	208V ⁴ 480V ⁵		SPD Square pole RBD Round pole WRB Wall bracket WWD Wood pole/wall	09' 9" arm ¹ 12' 12" arm ¹

Options

Shipped installed	Shipped separately ¹⁾	Finish required
PER3 NEMA two-lock five-wire receptacle only (no controls) ²	PER1FCV Bi-level, motion/ambient sensor, 8-15 mounting height, ambient sensor enabled at 16" ²⁾	DDBDZ Dark Bronze DLBDL Black DNDXZ Natural aluminum DNATD Textured natural aluminum DWHGD Textured white
PER2 Seven-wire receptacle only (no controls) ²	PER1FCV Bi-level, motion/ambient sensor, 15-30 mounting height, ambient sensor enabled at 16" ²⁾	
SE Single fuse (120, 277, 347V) ²	PMNTD03 Part night, dim till dim ¹⁾	
DF Double fuse (208, 240, 480V) ²	PMNTD03 Part night, dim 7 hrs ¹⁾	
PIR Bi-level, motion/ambient sensor, 8-15 mounting height, ambient sensor enabled at 16" ²⁾	BL30 Bi-level switched dimming, 30% ¹⁾	
PBR Bi-level, motion/ambient sensor, 15-30 mounting height, ambient sensor enabled at 16" ²⁾	BL50 Bi-level switched dimming, 50% ¹⁾	

LITHONIA LIGHTING One Lithonia Way • Conyers, Georgia 30012 • Phone: 800.279.8041 • www.lithonia.com
© 2012-2017 Acuity Brands Lighting, Inc. All rights reserved.

Ordering Information

Stock configurations are offered for shorter lead times:

Minimum Foot Candles	Stock Part Number	Accessories
KAD LED 30C 1000 40K R3 MVOLT PUMBAK DBDDZ	KADL 30C 40K R3	DL12KT 1.5 CL II Photo-cut - 52, two-lock (120-277V) ¹⁾
KAD LED 30C 1000 40K R5 MVOLT PUMBAK DBDDZ	KADL 30C 40K R5	DL12KT 1.5 CL II Photo-cut - 52, two-lock (347V) ¹⁾
KAD LED 40C 1000 40K R3 MVOLT PUMBAK DBDDZ	KADL 40C 40K R3	DL12KT 1.5 CL II Photo-cut - 52, two-lock (120-277V) ¹⁾
KAD LED 40C 1000 40K R5 MVOLT PUMBAK DBDDZ	KADL 40C 40K R5	DL12KT 1.5 CL II Photo-cut - 52, two-lock (347V) ¹⁾

For round pole mounting (RBD) only. 1) Requires P or L arm.

Drilling

Template #5 Top of Pole

Tenon O.D.	Single Unit	2 at 180°	2 at 120°	2 at 90°	4 at 90°
2-3/8"	T20-190	T20-280	T20-290	T20-300 ¹⁾	T20-390
2-7/8"	T25-190	T25-280	T25-290	T25-300	T25-490
4"	T35-190	T35-280	T35-290	T35-300	T35-490

Performance Data

Lumen Ambient Temperature (LAT) Multipliers

Ambient Temp	Multiplier
0°C	1.02
10°C	1.01
20°C	1.00
25°C	0.99
30°C	0.99
40°C	0.99

Projected LED Lumen Maintenance

Operating Hours	KAD LED 60C 1000	KAD LED 40C 1000	KAD LED 60C 700
1.0	0.99	0.96	0.76
1.0	0.93	0.88	0.79
1.0	0.86	0.87	0.84

Photometric Diagrams

FEATURES & SPECIFICATIONS

INTENDED USE: The energy savings and long life of the KAD LED area luminaire make it a reliable choice for illuminating streets, walkways, parking lots, and surrounding areas.

CONSTRUCTION: Single-piece die-cast aluminum housing with contoured edges has a 0.12" nominal wall thickness. Die-cast door frame has an impact-resistant, tempered glass lens that is fully gasketed with one piece tubular silicone.

FINISH: Exterior parts are protected by a zinc-flashed Super Durable TFC (tetrafluoroethylene) powder coat finish that provides superior resistance to corrosion and weathering. A tightly controlled multi-stage process ensures a minimum 3-mil thickness for a finish that can withstand extreme climate changes without cracking or peeling.

OPTICS: Precision-molded refractive acrylic lenses are available in four distributions. Light beams are available in standard 4000K, 3000K or 5000K (70 CRI) configurations.

ELECTRICAL: Light engine consists of high-efficiency LEDs mounted to a metal core circuit board and aluminum heat sink, ensuring optimal thermal management and long life. Class 1 electronic driver has a power factor >0.96, THD <20%, and has an expected life of 100,000 hours with <1% lumen loss. Easy-to-adjust screw-down protection device meets a minimum Category C Low Spur ANSI/IEEE C62.41.2.

RSXF1 LED Floodlight

Specifications

- EPA (ft@45°): 2.1 ft² (0.2 m²)
- Length: 20.7" (52.6 cm)
- Width: 13.3" (33.8 cm)
- Height: 3.0" (7.6 cm) Main Body
7.6" (19.3 cm) Arm
- Weight (max): 31 lbs (14.1 kg)

Ordering Information

Series	Performance Package	Color Temperature	Distribution	Voltage	Mounting
RSXF1 LED	P1	30K 3000K	AHWP Area Wide Flood	MVOLT (120V-277V) ¹⁾	IS Adjustable slipfitter (fits 2-3/8" OD tenon) ¹⁾
	P2	40K 4000K	WFL Wide Flood	HVOLT (347V-480V) ¹⁾	YKCS2 Yoke with 76-3/50 cant, 20" ¹⁾
	P3	50K 5000K	MFL Medium Flood	XVOLT (277V-480V) ¹⁾	AASP Adjustable 581 arm square pole mounting ¹⁾
	P4		NFL Narrow Flood		AARP Adjustable 581 arm round pole mounting ¹⁾
			SP Spot		AARW Adjustable 581 arm wall bracket ¹⁾
			NSP Narrow Spot		ANWS Adjustable 581 arm wall bracket and surface condenser ¹⁾

Options

Shipped installed	Shipped separately	Finish
PE Photocell, button style ¹⁾	PER2 Seven-wire two-lock receptacle only (no controls) ¹⁾	DDBDZ Dark Bronze DLBDL Black DNDXZ Natural Aluminum DNATD Textured natural aluminum DWHGD Textured white
CE34 Conduit entry 3/4" NPT (Qty 2)	DF Double fuse (120, 277, 347V) ¹⁾	
SP Single fuse (120, 277, 347V) ¹⁾	SPD30K 20KV Surp ask (120V standard)	
FAD Field adjustable arm ¹⁾	DMO 0-10V dimming extend out back of housing for external control (ordered separately) ¹⁾	

Drilling

Template #5

Template #5 Top of Pole

Tenon Mounting Slipfitter **

Tenon O.D.	Single Unit	2 at 180°	2 at 120°	2 at 90°	4 at 90°
2-3/8"	T20-190	T20-280	T20-290	T20-300 ¹⁾	T20-390
2-7/8"	T25-190	T25-280	T25-290	T25-300	T25-490
4"	T35-190	T35-280	T35-290	T35-300	T35-490

Performance Data

Lumen values are from photometric tests performed in accordance with IESNA LM-79. Data is considered to be representative of the configurations shown, within the tolerances allowed by Lighting Facts. Contact factory for performance data on any configurations not shown here.

Series	Power (watt)	Opt. MTC	Opt. DMTC	Opt. CMTC	Opt. DMTC	Opt. CMTC	Opt. DMTC	Opt. CMTC
20C	35W	82	83	84	85	86	87	88
40C	69W	83	84	85	86	87	88	89
60C	137W	84	85	86	87	88	89	90

Ordering Information

Accessories

Accessories	Notes
DSDF120	1) MVOLT driver operation on any line voltage from 120-277V
RSXF120	2) HVOLT driver operation on any line voltage from 347-480V
RSXF240	3) Single fuse SPD requires 120V, 277V or 347V Double fuse SPD requires 208V, 240V or 480V voltage option
RSFMBK1	4) MVOLT driver not available with P1 or P2; MVOLT driver operation on any line voltage from 277V-480V 5000K HIGI
RSFMBK2	5) HVOLT driver not available with P1 or P2; HVOLT driver operation on any line voltage from 347V-480V 5000K HIGI
DL12KT 1.5 CL II	6) Requires DMTC, DMTC, 277V or 347V
DL12KT 1.5 CL III	7) Requires MVOLT or HVOLT
DL12KT 1.5 CL IV	8) Requires MVOLT or HVOLT
DL12KT 1.5 CL V	9) Requires MVOLT or HVOLT

External Shields

Pole/Mounting Information

Accessories including ballrooms, cross arms and other adapters are available under the accessories tab at Lithonia's Outdoor Poles and Arms product page. Click here to visit Accessories.

Round Tenon Mount - Pole Top Slipfitters

Series	Part Number	Part Number	Part Number	Part Number	Part Number
2-3/8"	ASFP	AS3-190	AS3-290	AS3-300	AS3-490
2-7/8"	ASFP	AS75-190	AS75-280	AS75-300	AS75-490
4"	ASFP	AS75-190	AS75-280	AS75-300	AS75-490

Drill Side Location by Configuration Type

RSXF1 - Luminaire EPA

*Includes luminaire and integral mounting arm. Other tenons, arms, brackets or other accessories are not included in this EPA data.

Feature	Quantity	A Mounting Configuration	19W (ft)	110W (ft)	240W (ft)	490W (ft)	990W (ft)
IS-Integral Slipfitter	1	Yoke	1.2	1.4	1.5	1.6	1.7
YK Yoke	1	Yoke	1.2	1.4	1.5	1.6	1.7
ASFP Adjustable Arm Square Pole	1	Yoke	1.2	1.4	1.5	1.6	1.7

FOR REVIEW - NOT FOR CONSTRUCTION

Photometric Lighting Details

FedEx Ground Facility Langford

Centre Mountain Business Park
Combined Keycorp 503 And Beecher Bay 310 Lot

REVISED PER FEDEX COMMENTS		DATE	BY
2	07/25/24	JST	
1	10/25/23	JST	