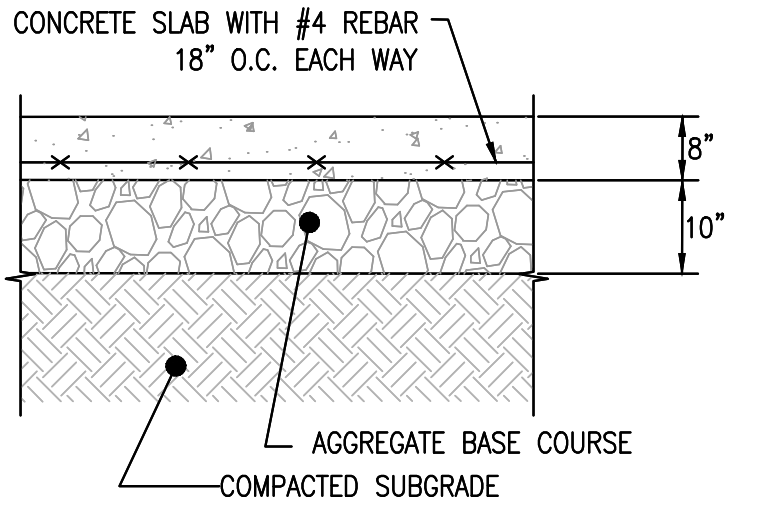
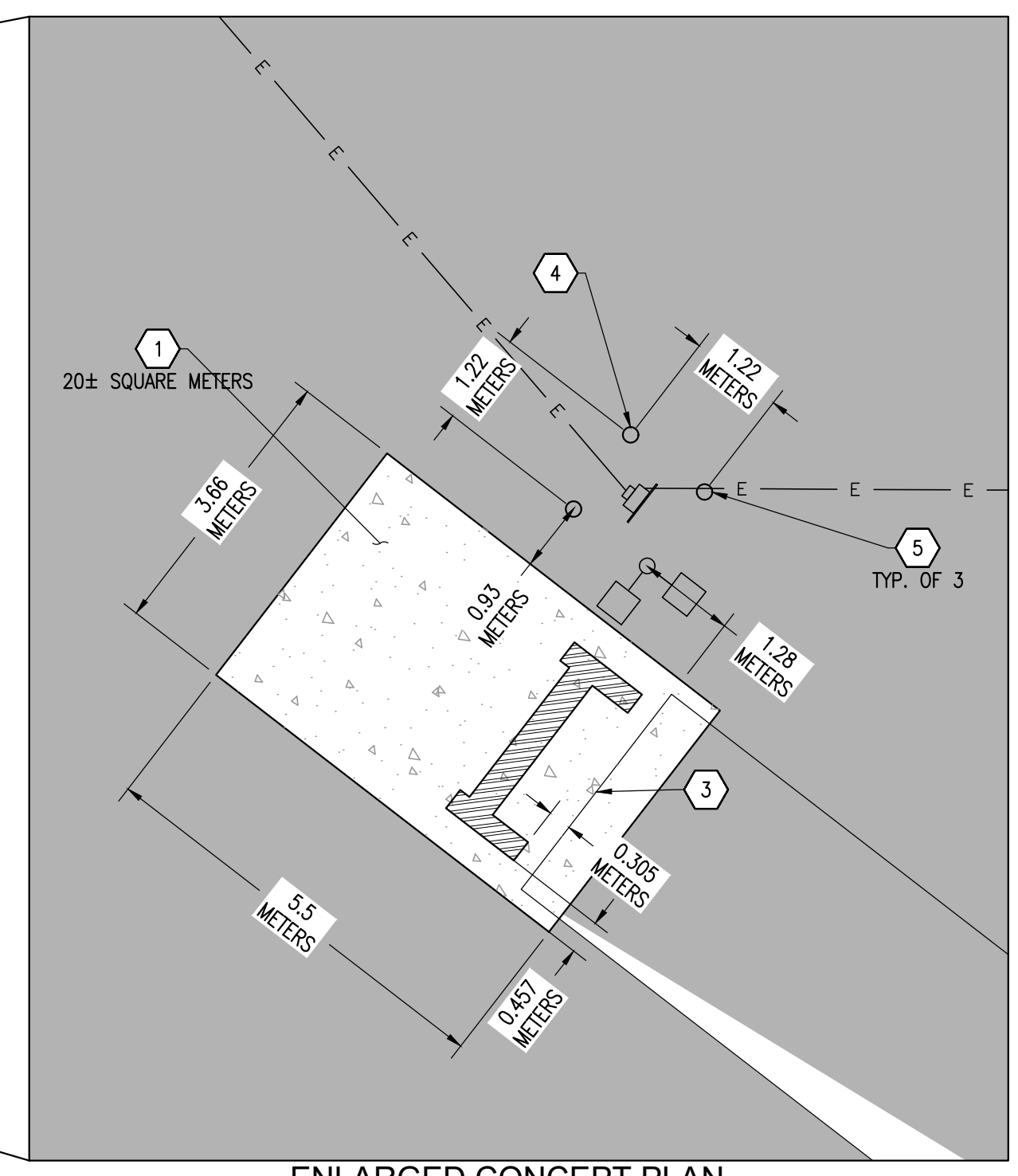
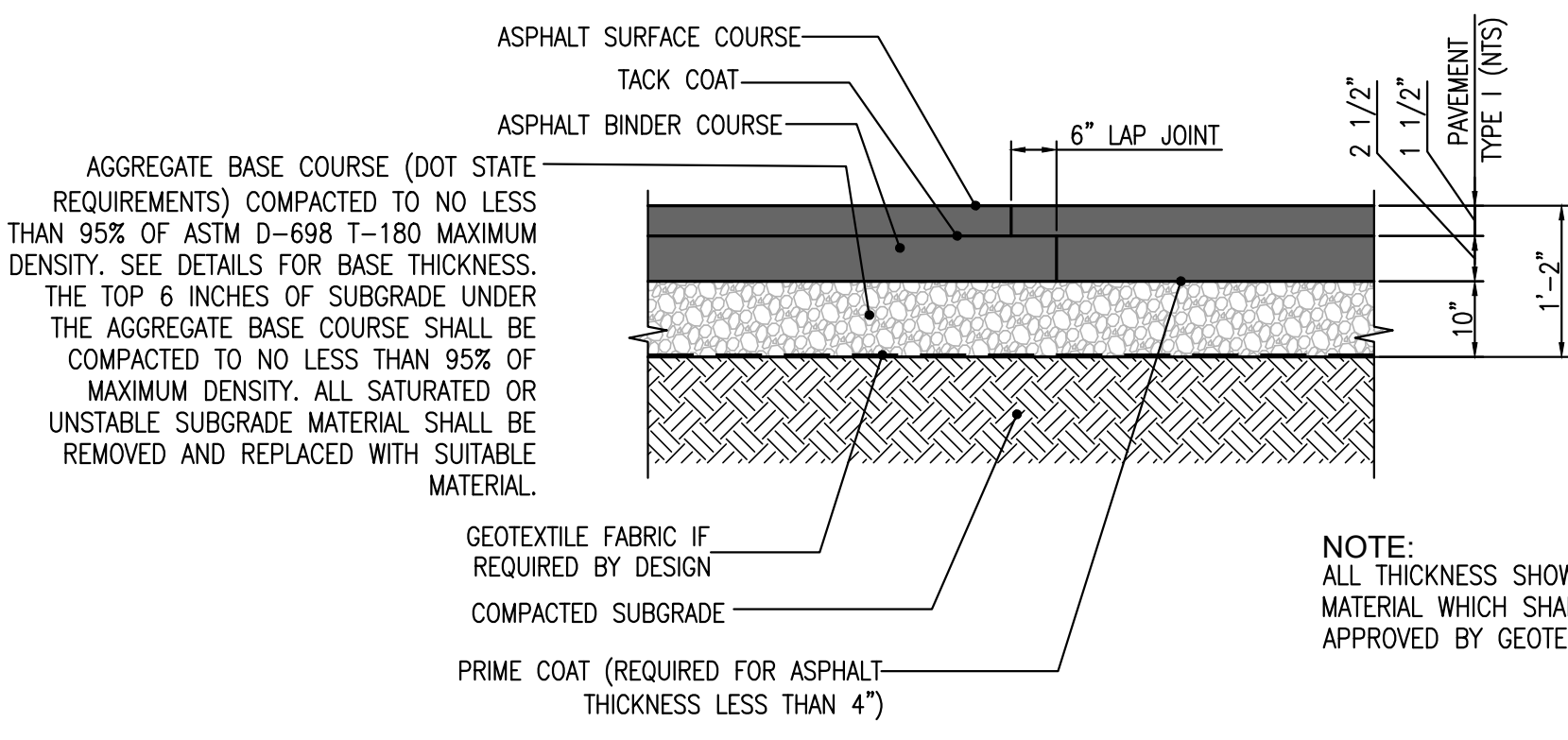


WATER STORAGE TANK FOR FIRE PROTECTION VOLUME TO BE 7,600L AND BE COMPLETE WITH CONNECTION FOR LANGFORD FIRE. DETAILS TO BE PROVIDED FOR CONSTRUCTION



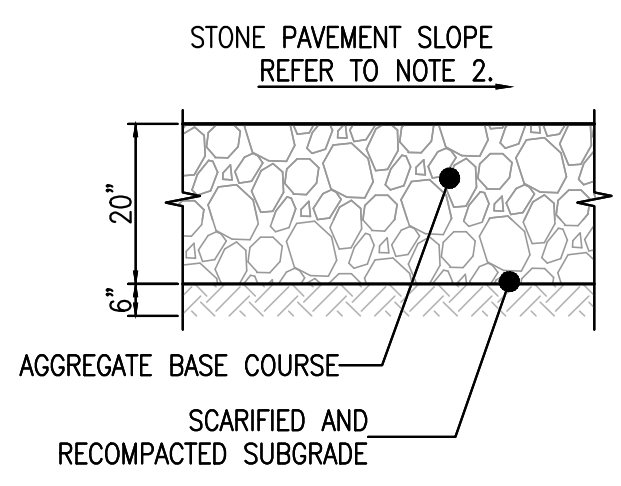
**NOTE:**  
AGGREGATE BASE COURSE COMPACTED TO NO LESS THAN 95% OF ASTM D-698 T-180 MAXIMUM DENSITY. SEE DETAILS FOR BASE THICKNESS. THE TOP 6 INCHES OF SUBGRADE UNDER THE AGGREGATE BASE COURSE SHALL BE COMPACTED TO NO LESS THAN 95% OF MAXIMUM DENSITY. ALL SATURATED OR UNSTABLE SUBGRADE MATERIAL SHALL BE REMOVED AND REPLACED WITH SUITABLE MATERIAL.

**1** CONCRETE PAVEMENT SECTION  
N.T.S.



**NOTE:**  
ALL THICKNESS SHOWN ARE MINIMUM COMPACTED MATERIAL WHICH SHALL BE REVIEWED AND APPROVED BY GEOTECHNICAL ENGINEER.

**2** ASPHALT PAVEMENT (02510-001)  
N.T.S.



**NOTES:**

- ALL THICKNESSES SHOWN ARE MINIMUM COMPACTED MATERIAL WHICH SHALL BE REVIEWED AND APPROVED BY GEOTECHNICAL ENGINEER.
- REFER TO THE GEOTECHNICAL REPORT FOR SPECIFICATIONS FOR THE MAXIMUM AND MINIMUM STONE PAVEMENT SLOPE REQUIREMENTS.
- AGGREGATE BASE COURSE COMPACTED TO NO LESS THAN 95% OF ASTM D-698 T-180 MAXIMUM DENSITY. SEE DETAILS FOR BASE THICKNESS. THE TOP 6 INCHES OF SUBGRADE UNDER THE AGGREGATE BASE COURSE SHALL BE COMPACTED TO NO LESS THAN 95% OF MAXIMUM DENSITY. ALL SATURATED OR UNSTABLE SUBGRADE MATERIAL SHALL BE REMOVED AND REPLACED WITH SUITABLE MATERIAL.

**3** GRAVEL PAVEMENT  
N.T.S.

**CONSTRUCTION NOTES:**

- CONSTRUCT CONCRETE PAD  
RE: SHEET 1 OF 6 DETAIL 1
- CONSTRUCT ASPHALT PAVEMENT  
RE: SHEET 1 OF 6 DETAIL 2
- INSTALL DOCKZILLA DOCK BUMPER & SEAL  
RE: SHEET 2 OF 6 DETAIL 2
- CONSTRUCT ELECTRICAL PEDESTAL AND INSTALL ELECTRICAL EQUIPMENT (OR TEMPORARY GENERATOR)  
RE: SHEET 2 OF 6 DETAIL 4
- CONSTRUCT BOLLARDS. ENSURE BOLLARD PLACEMENT DOES NOT OBSTRUCT ACCESS TO THE ELECTRICAL PEDESTAL, THE LOAD DOORS, OR THE PERSONNEL DOORS  
RE: SHEET 2 OF 6 DETAIL 3
- POSITION MOBILE DOCK THAT THE MOBILE DOCK IS 24" ABOVE FINAL GRADE
- CONSTRUCT SECURITY FENCE  
RE: SHEET 2 OF 6 DETAIL 1
- CONSTRUCT CANTILEVER GATE
- CONSTRUCT CANTILEVER GATE REMOVE EXIT LOOP
- CONSTRUCT CANTILEVER GATE KEYPAD ENTRY
- CONSTRUCT DOCK LIGHT ON A DEDICATED SWITCH
- INSTALL PARKING BLOCK  
RE: SHEET 3 OF 6 DETAIL 2
- NEW ELECTRICAL CONTAINER
- INSTALL PEDESTRIAN GATE  
RE: SHEET 3 OF 6 DETAIL 1
- CONSTRUCT GRAVEL PAVEMENT  
RE: SHEET 1 OF 6 DETAIL 3

**GENERAL NOTES:**

- ALL CONSTRUCTION TO CONFORM TO THE CITY OF LANGFORD BUILDING DEPARTMENT STANDARDS AND SPECIFICATIONS
- CONTRACTOR MUST CONTACT CITY OF LANGFORD TRAFFIC OPERATIONS SUPERVISOR PRIOR TO CONSTRUCTION OR PLACEMENT OF TRAFFIC CONTROL DEVICES/FEATURES (STRIPING, SIGNALS, MEDIANS, ETC.) FOR CONSTRUCTION IN THE RIGHT OF WAY.
- ALL DIMENSIONS ARE IN METERS UNLESS OTHERWISE INDICATED.
- CONCRETE TRUCK LANDING PAD MUST BE LEVEL

**PAVEMENT NOTES:**

- ASPHALT PAVEMENT AREA:  
6,852 SQUARE METERS (73,752 SQUARE FEET)
- STONE PAVEMENT AREA:  
6,807 SQUARE METERS (73,270 SQUARE FEET)

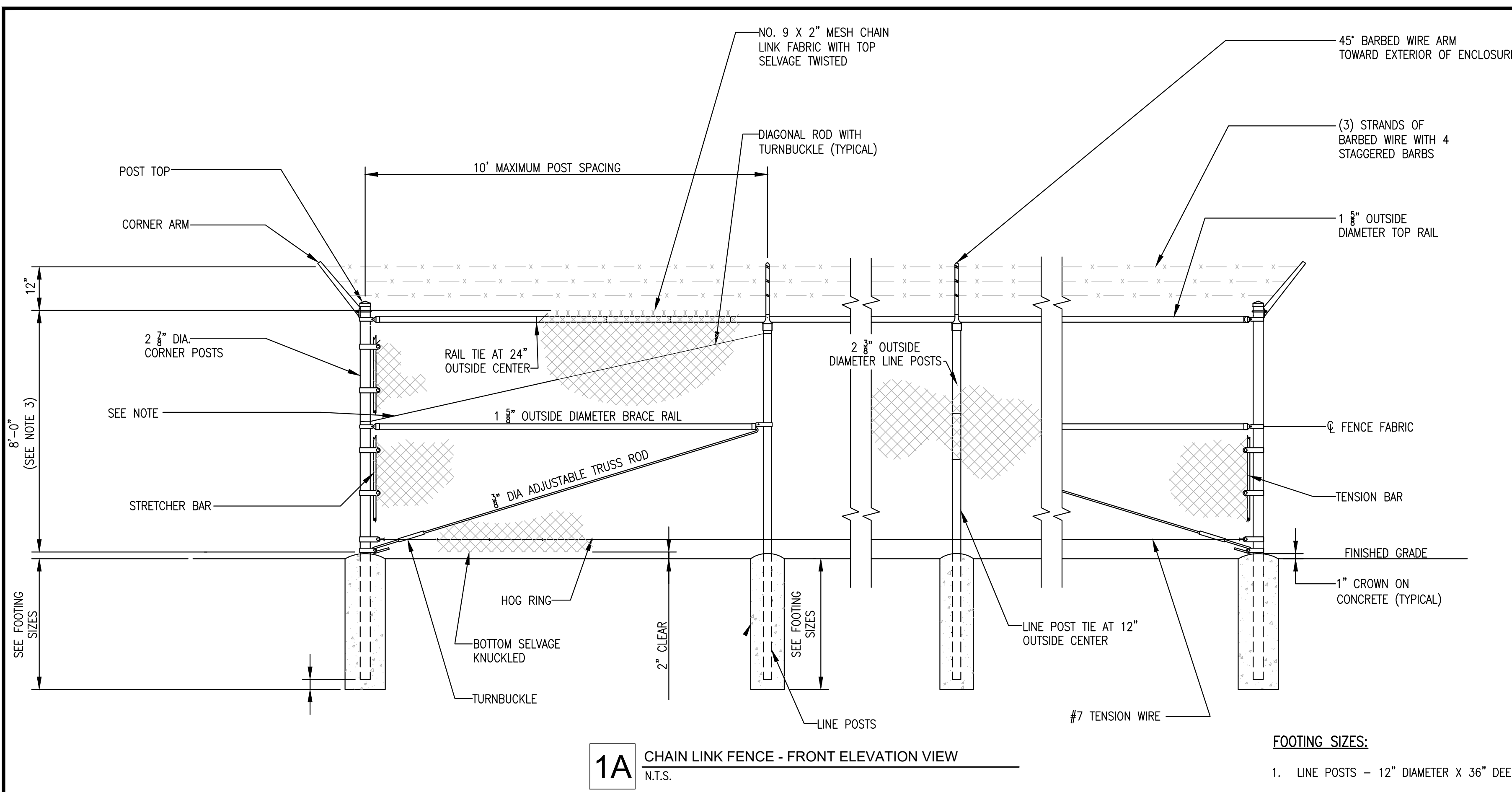
FOR REVIEW - NOT FOR CONSTRUCTION

NO.	REVISION	DATE	BY	COMMENT
1	REVISED BY ON POINT PROJECT ENGINEERS	07/22/24	NOC	
2	REVISED PER FEDEX COMMENTS	07/25/24	JST	
1	REVISED PER FEDEX COMMENTS	10/25/23	JST	

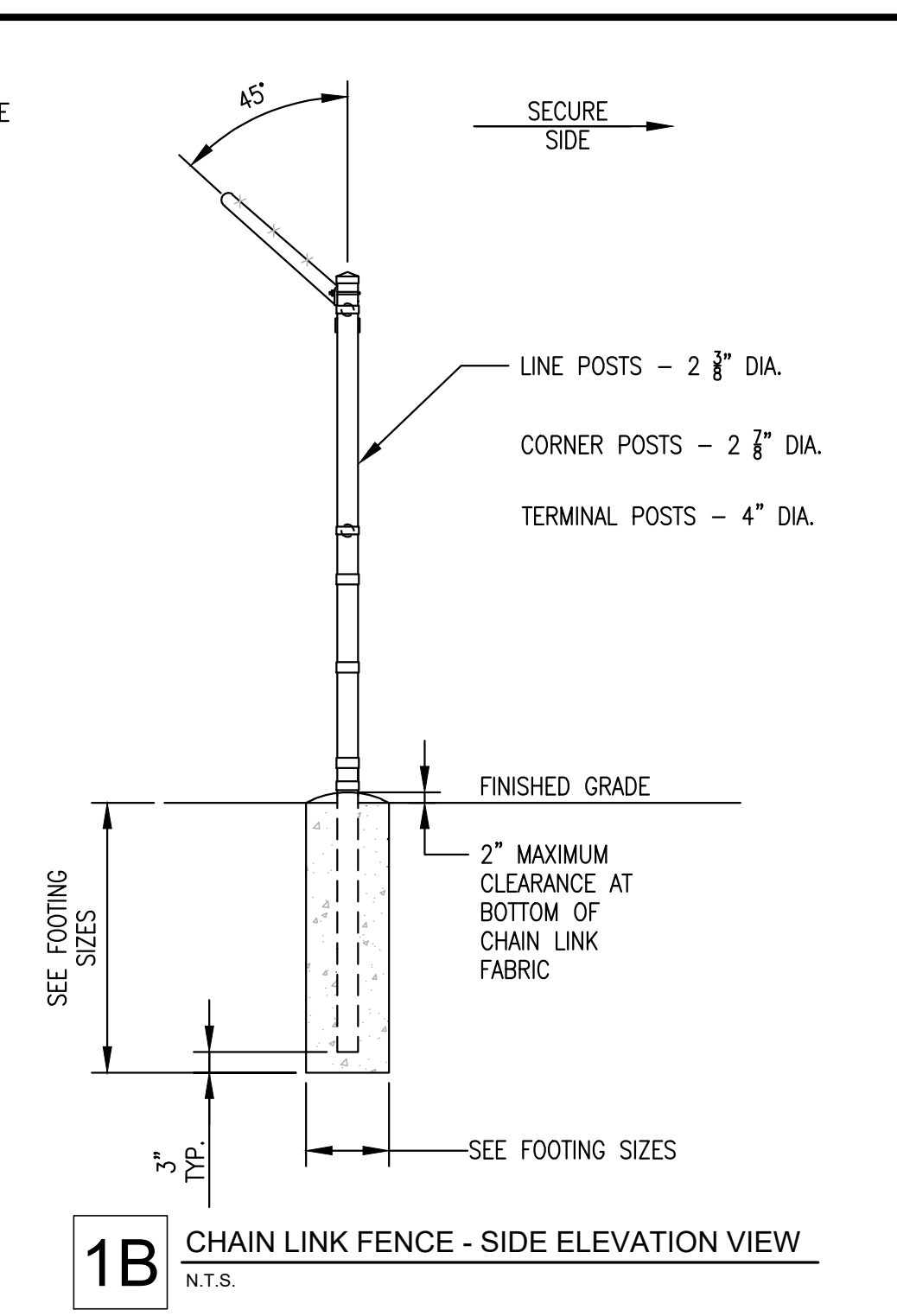
Concept Plan  
**FedEx Ground Facility  
Langford**  
 Centre Mountain Business Park  
 Combined Keycorp 503 And Beecher Bay 310 Lot

**FedEx**  
Ground  
Langford, British Columbia

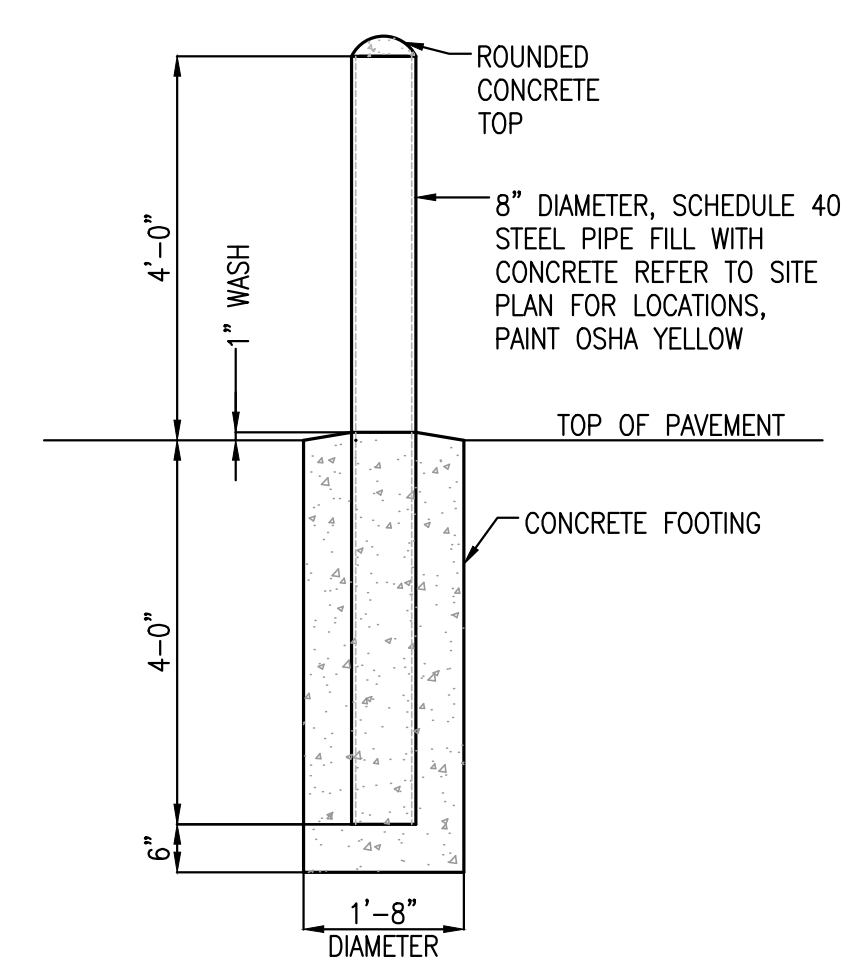
PROJECT NO: F23-069  
DATE: 07/28/2023  
F23-069 concept.dwg  
-SHEET-  
**1 OF 6**



**1A** CHAIN LINK FENCE - FRONT ELEVATION VIEW  
N.T.S.



**1B** CHAIN LINK FENCE - SIDE ELEVATION VIEW  
N.T.S.



**3** 8" BOLLARD DETAIL (02870-002)  
N.T.S.

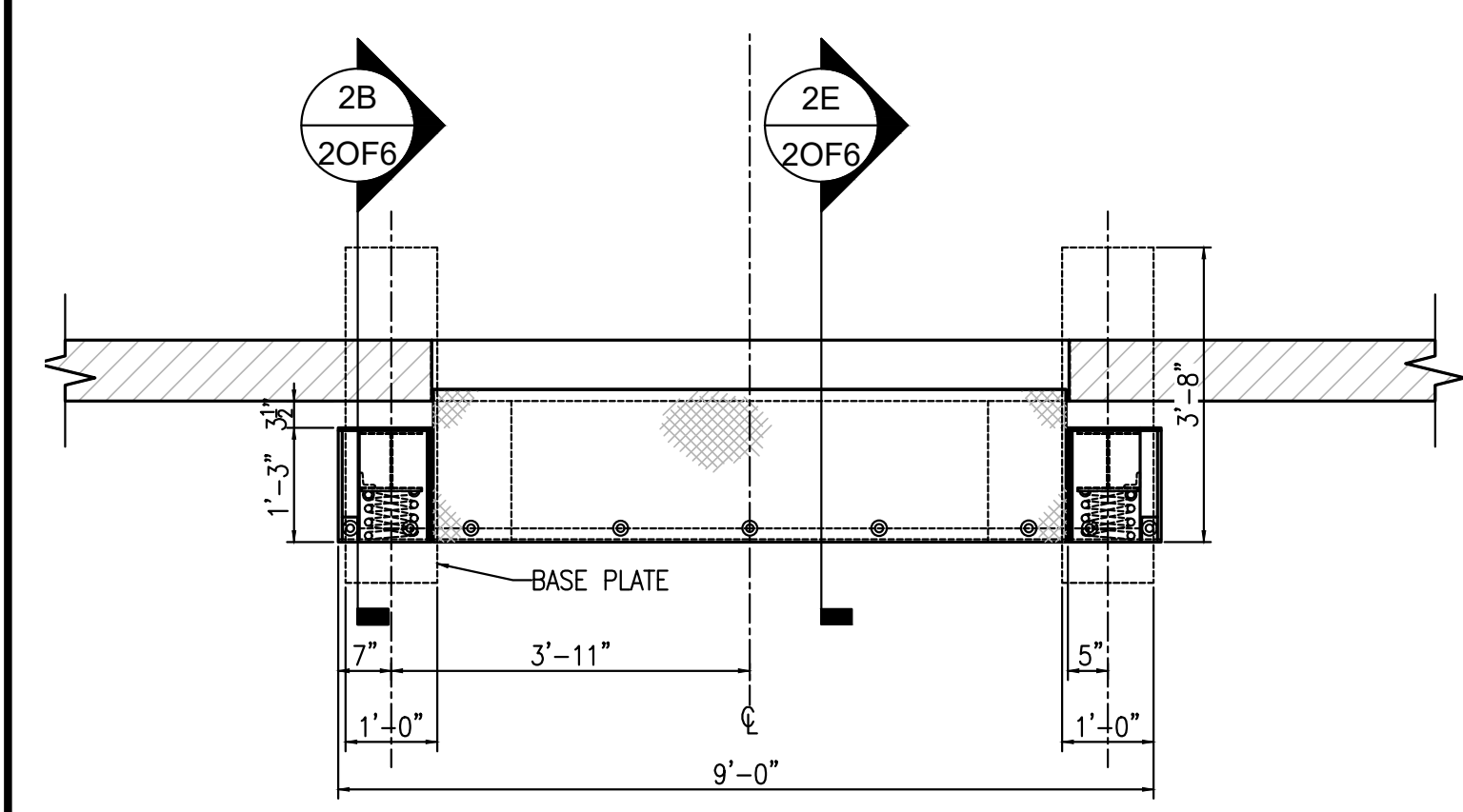
**NOTES:**

1. TEMPORARY SECURITY FENCE TO BE INSTALLED WITHOUT BARBED WIRE IF APPLICABLE.
2. POST BRACES SHALL BE PROVIDED AT EACH GATE, CORNER, AND END POSTS, WHERE FENCE RUNS OF 300 FEET OR MORE TERMINATE AT THE POST, SECOND DIAGONAL ROD SHALL BE INSTALLED AS SHOWN.
3. WHEN BARBED WIRE IS NOT PERMITTED BY LOCAL AHJ (AUTHORITY HAVING JURISDICTION), 8'-0" HIGH CHAIN LINK FENCE SHALL BE PROVIDED. IN THE EVENT LOCAL AHJ DOES NOT PERMIT CHAIN LINK FENCE, A PROPOSED FENCING SOLUTIONS MUST BE APPROVED BY FEDEX GROUND SECURITY GROUP.

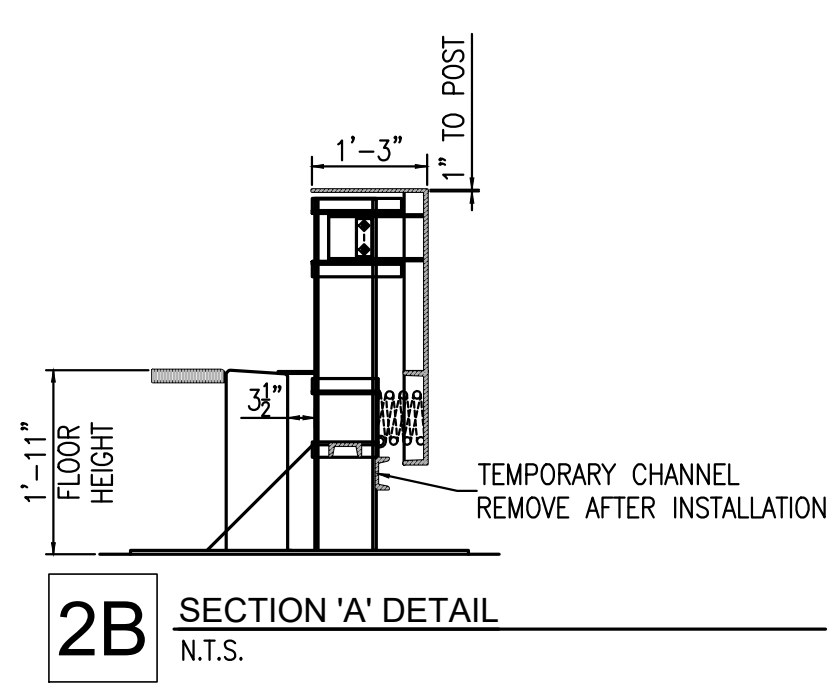
**FOOTING SIZES:**

1. LINE POSTS - 12" DIAMETER X 36" DEEP
2. CORNER AND TERMINAL POSTS - 12" DIAMETER X 42" DEEP
3. GATE POSTS - 24" DIAMETER X 48" DEEP
4. VERIFY HEIGHT RESTRICTIONS WITH LOCAL AUTHORITY HAVING JURISDICTION

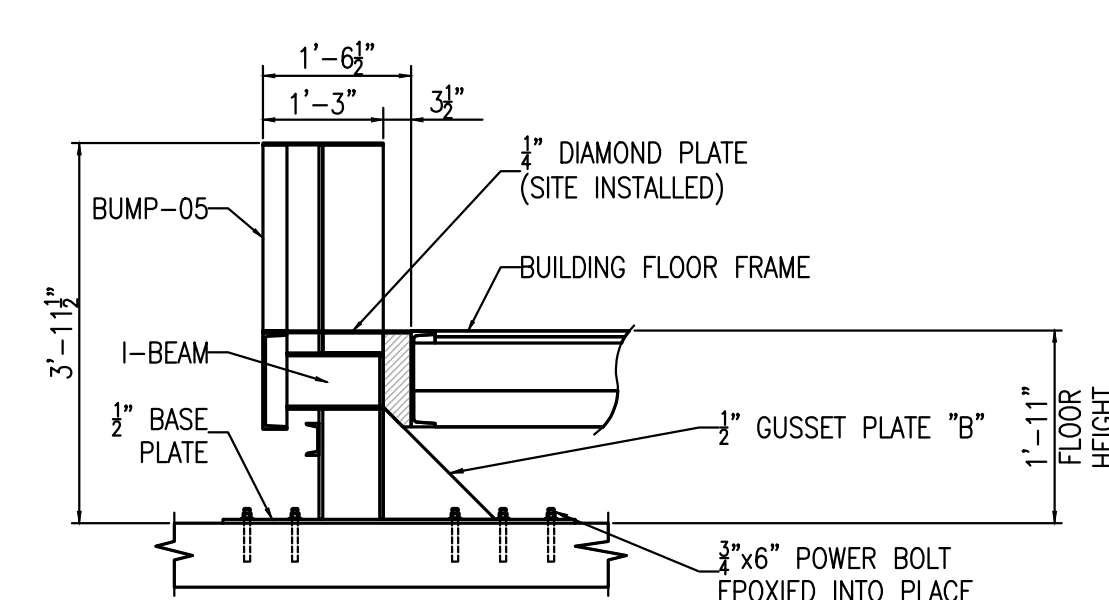
**1** PERIMETER FENCE DETAIL (02830-006)  
N.T.S.



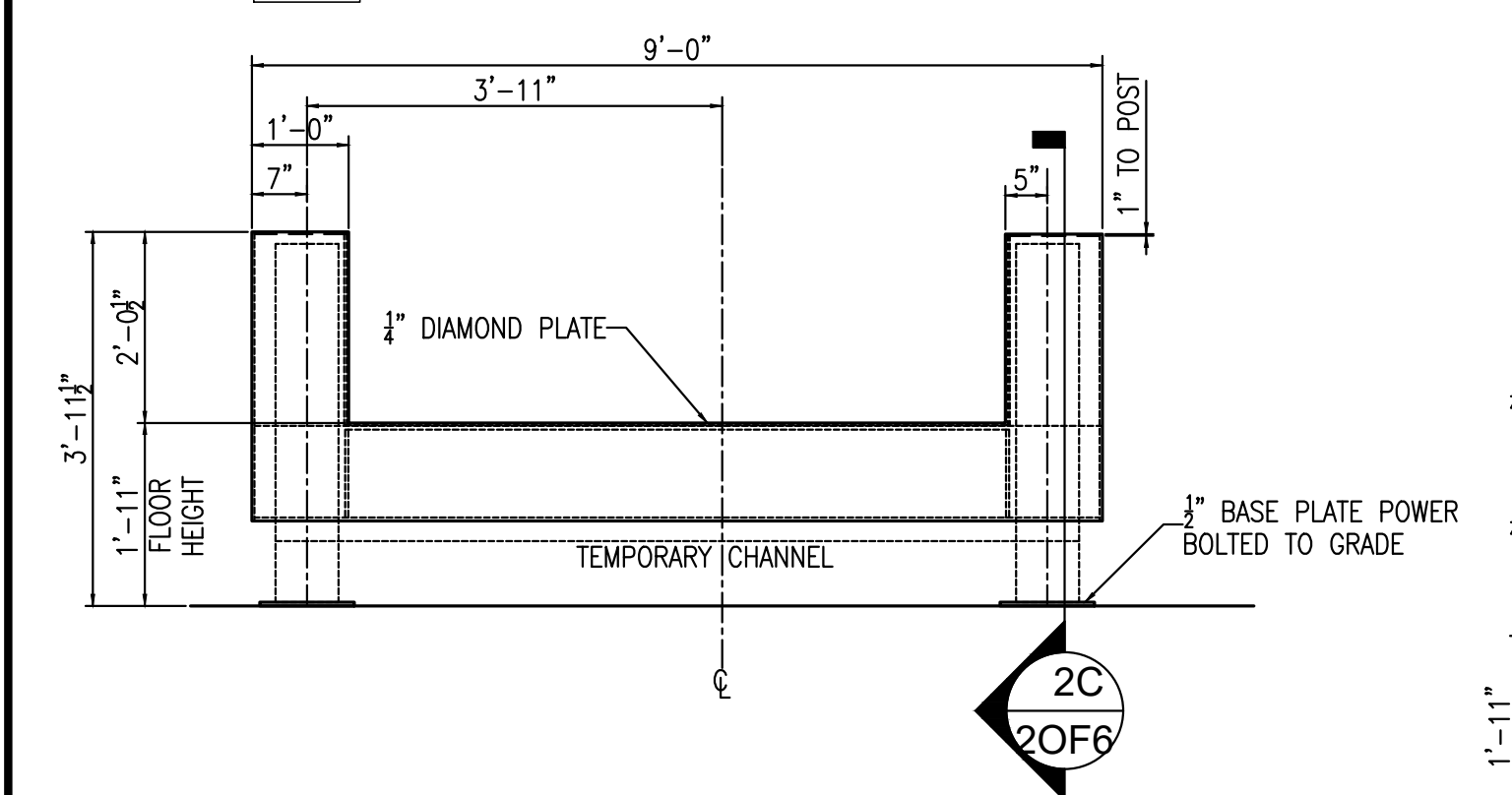
**2A** SURFACE MOUNTED BUMP-05 PLAN  
N.T.S.



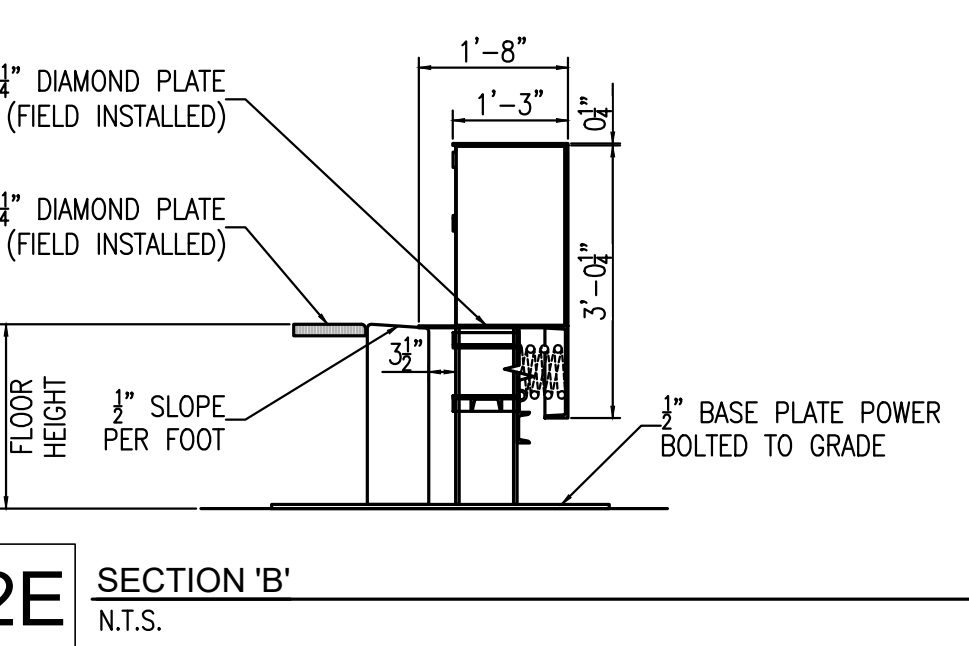
**2B** SECTION 'A' DETAIL  
N.T.S.



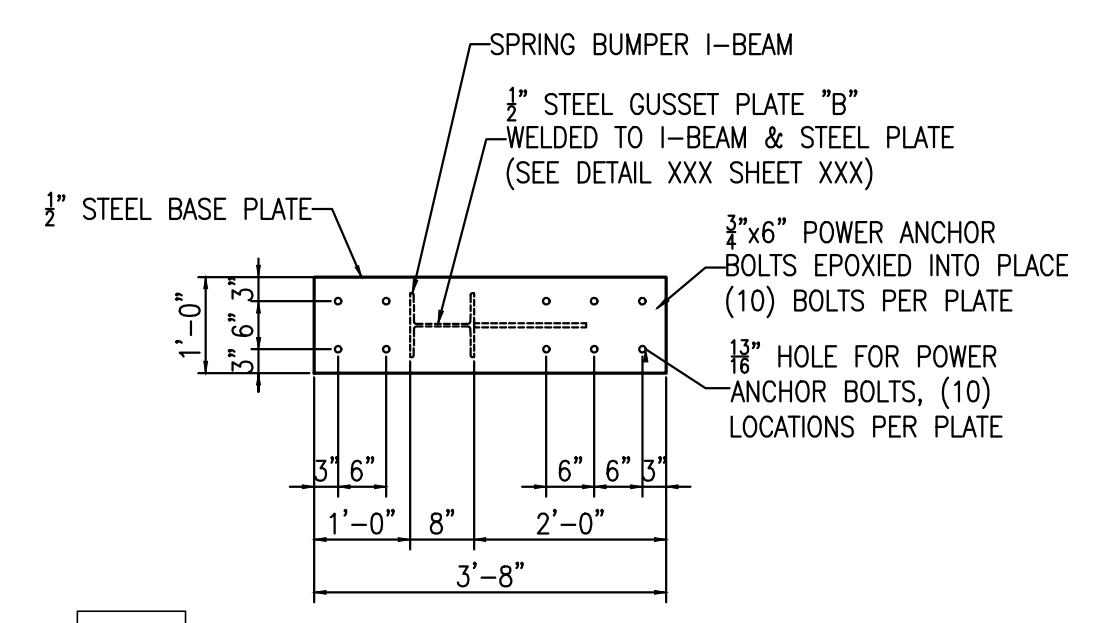
**2C** SPRING BUMPER-05 DETAIL SECTION 'C'  
N.T.S.



**2D** SURFACE MOUNTED BUMP-05 TYPICAL ELEVATION  
N.T.S.



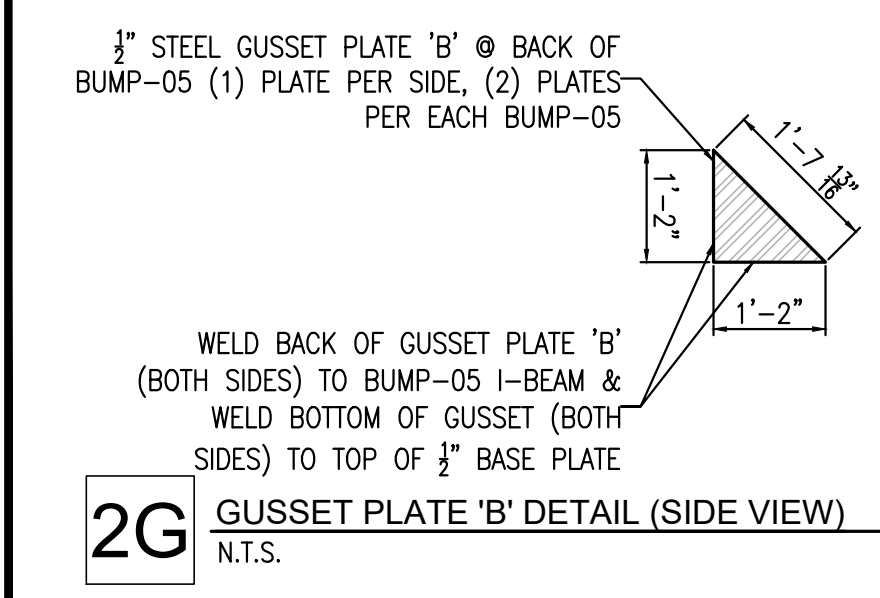
**2E** SECTION 'B' DETAIL  
N.T.S.



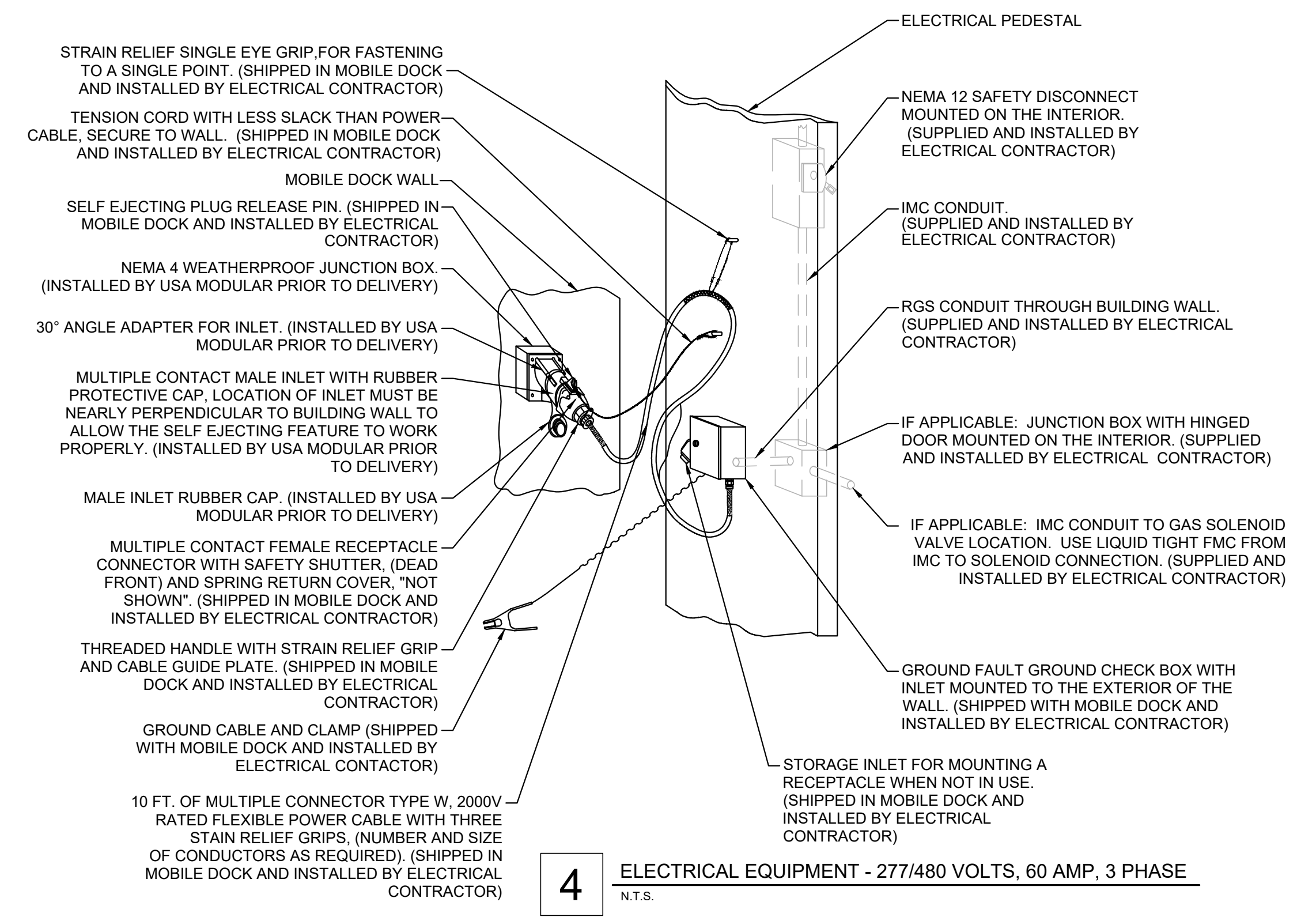
**2F** BASE PLATE DETAIL BUMP-05 (TOP VIEW)  
N.T.S.

**NOTE:**  
WHEN POSTS ARE IN CONFLICT WITH BUILDING, BLOCK OUT FOOTING

**2** DOCKZILLA BUMPER DETAIL  
N.T.S.



**2G** GUSSET PLATE 'B' DETAIL (SIDE VIEW)  
N.T.S.

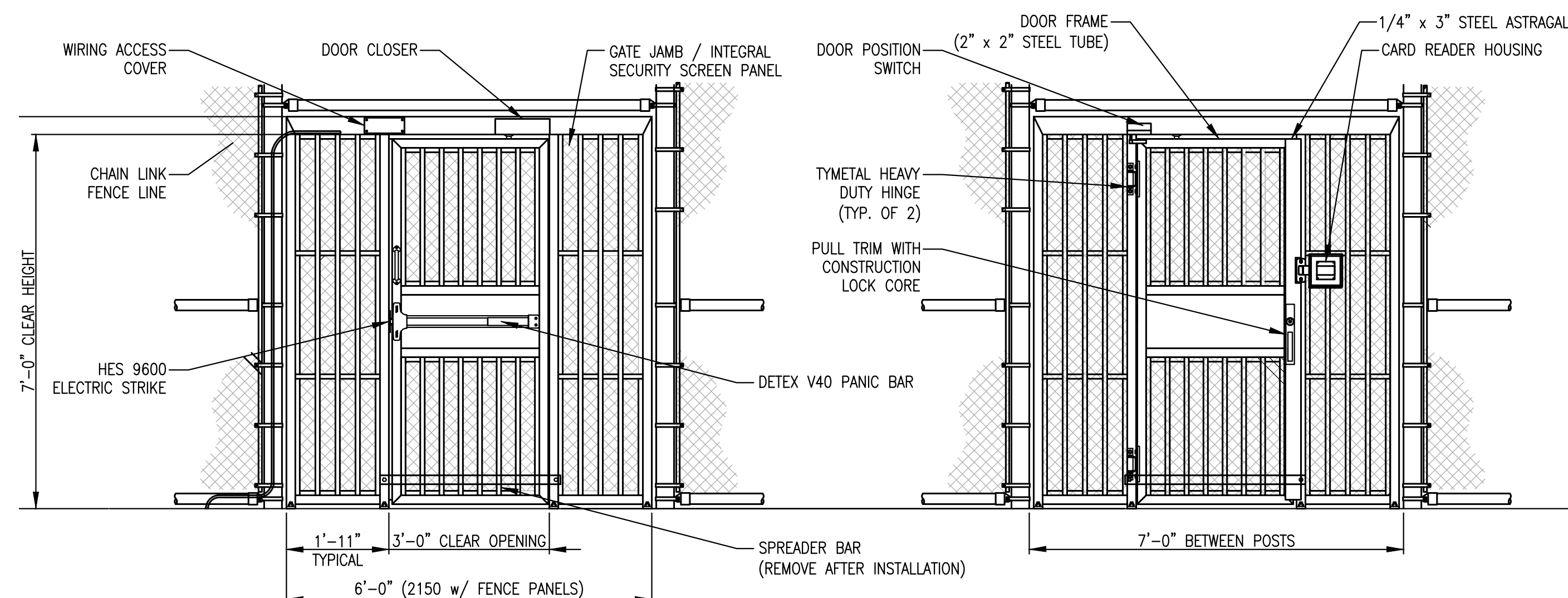


**4** ELECTRICAL EQUIPMENT - 277/480 VOLTS, 60 AMP, 3 PHASE  
N.T.S.

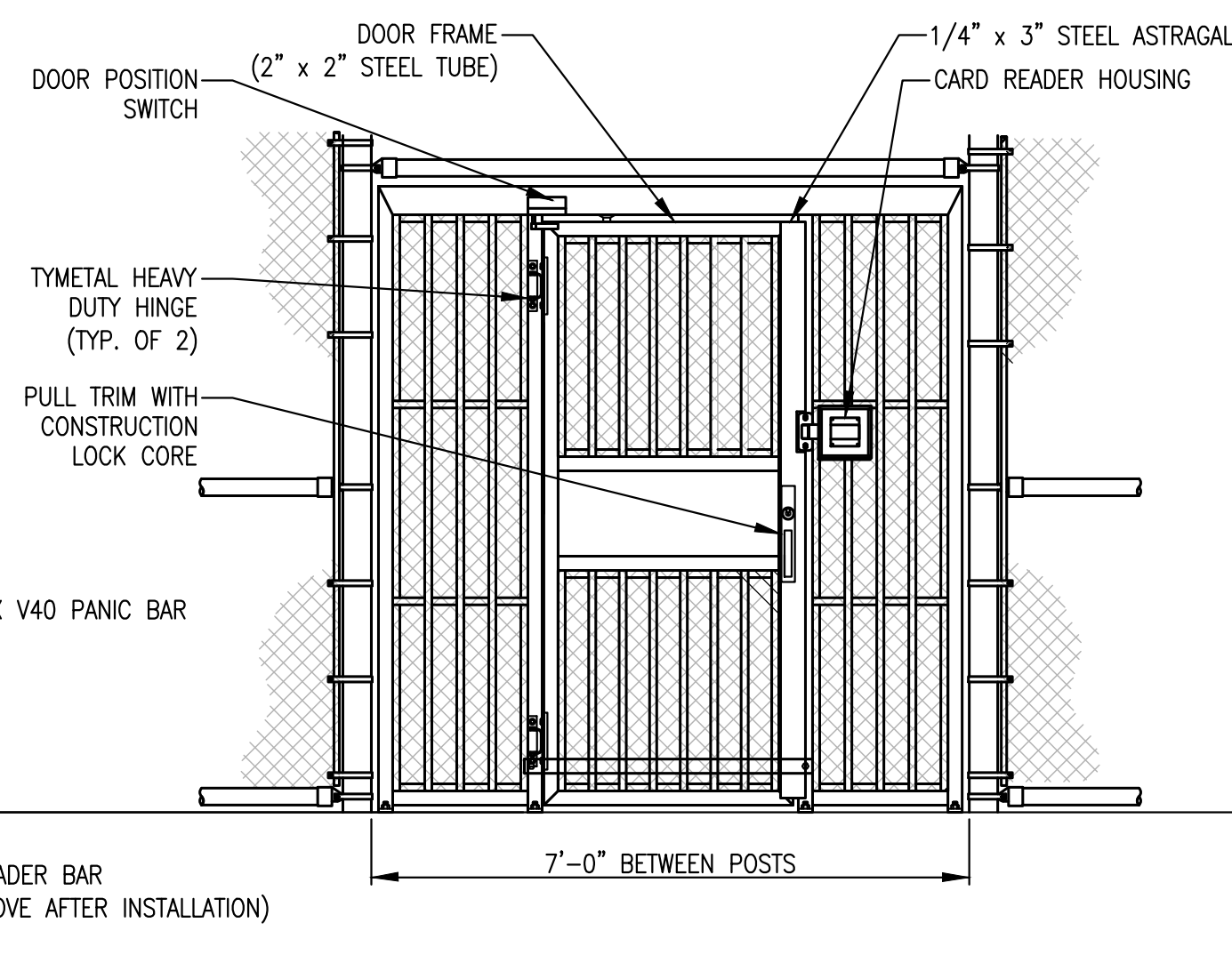
FOR REVIEW - NOT FOR CONSTRUCTION

REV	DATE	BY	COMMENTS
1	10/25/23	JST	REVISION PER FEDEX COMMENTS
2	07/25/24	JST	REVISION PER FEDEX COMMENTS

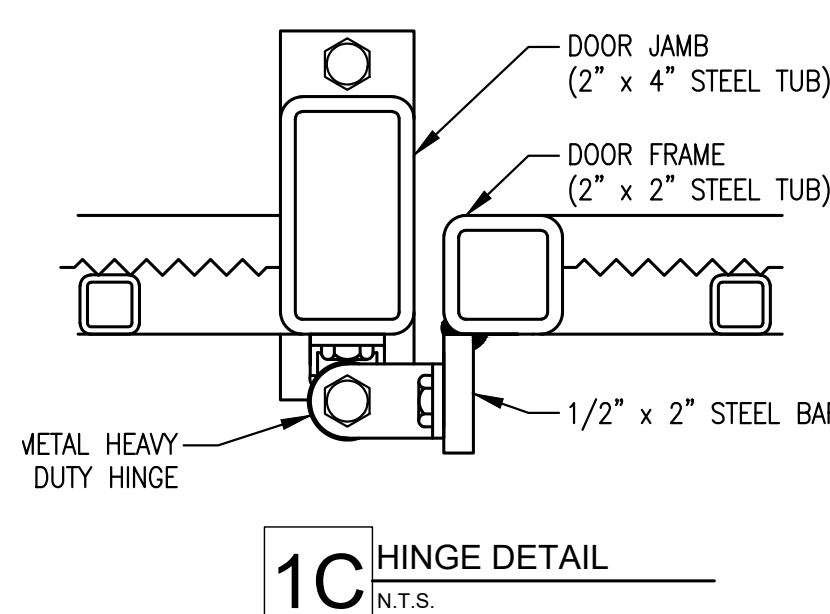
Details  
**FedEx Ground Facility**  
**Langford**  
 Centre Mountain Business Park  
 Combined Keycorp 503 And Beecher Bay 310 Lot



**1A** PEDESTRIAN GATE ELEVATION - SECURE SIDE  
N.T.S.

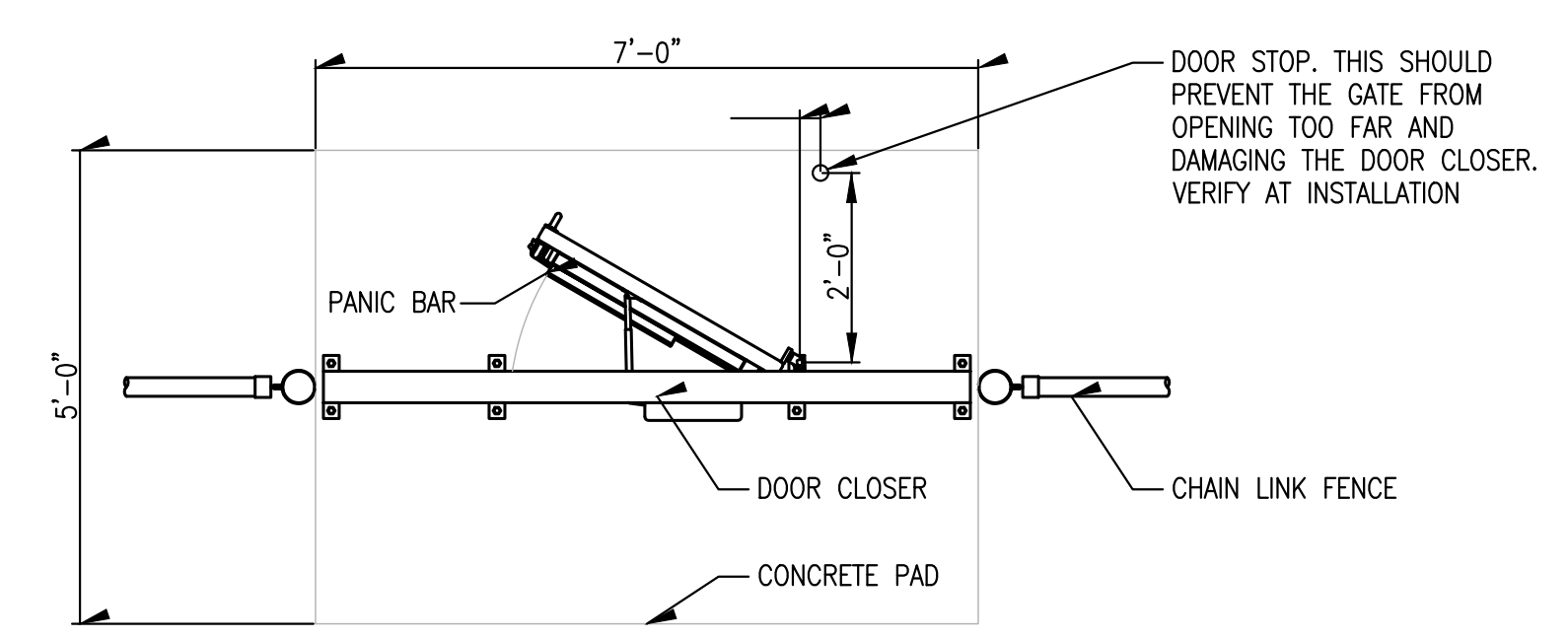


**1B** PEDESTRIAN GATE ELEVATION - UNSECURED SIDE  
N.T.S.



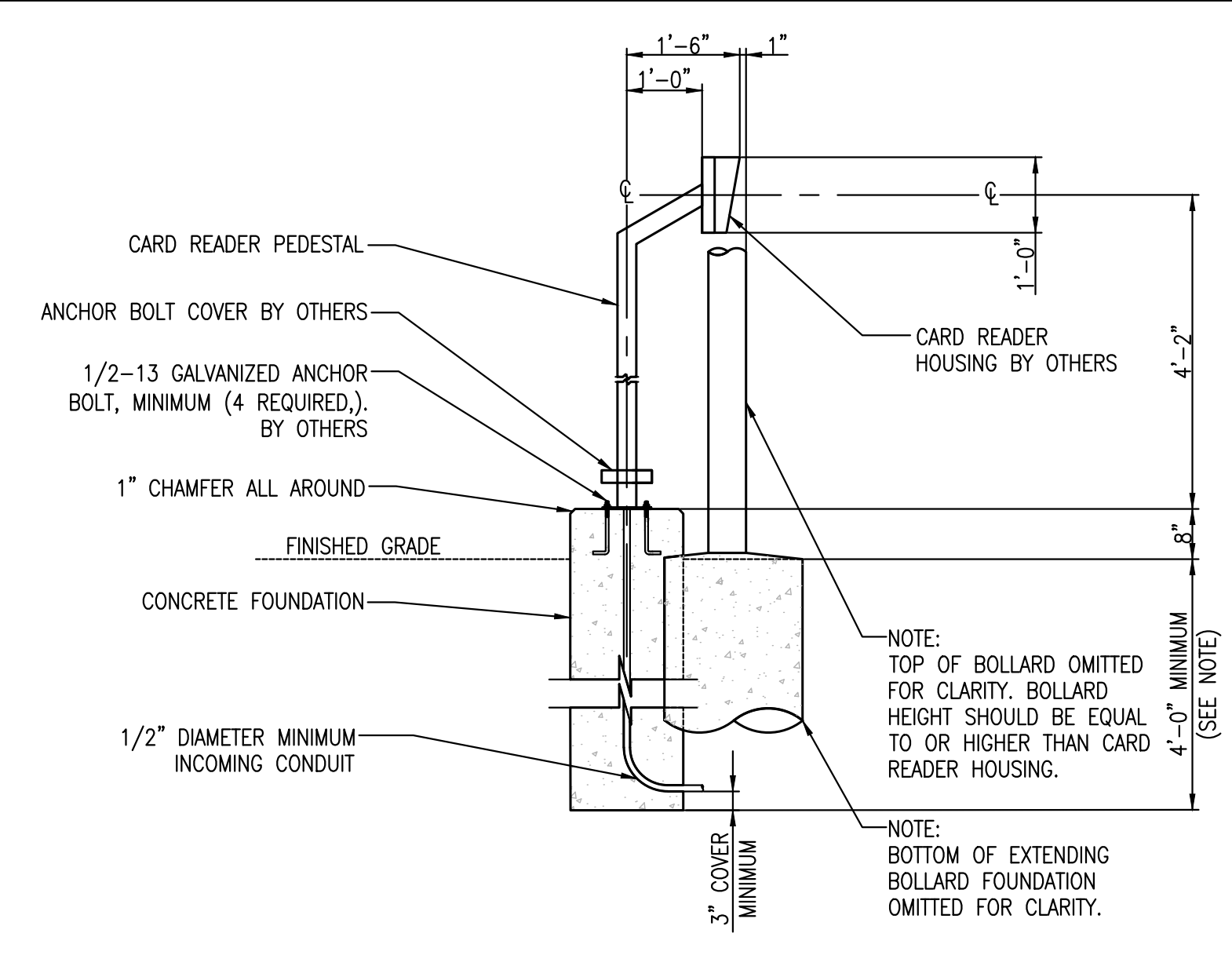
**1C** HINGE DETAIL  
N.T.S.

- NOTES:
1. THE OPENING IN THE FENCE LINE SHALL BE BUILT TO ACCOMMODATE THE DOOR JAMB PER THE FEDEX SPECIFICATIONS.
  2. PANIC BAR IS A DETEX MODEL V40 WITH DETEX O3AN TRIM AND HES 9600 ELECTRIC STRIKE.
  3. GATE FRAME AND INTEGRAL SECURITY SCREEN PANELS WILL BE FILLED WITH 1" SQ. STEEL PICKETS @4" O.C. AND EXPANDED METAL MESH.
  4. GATE JAMB AND GATE PANEL ARE HOT DIP GALVANIZED.

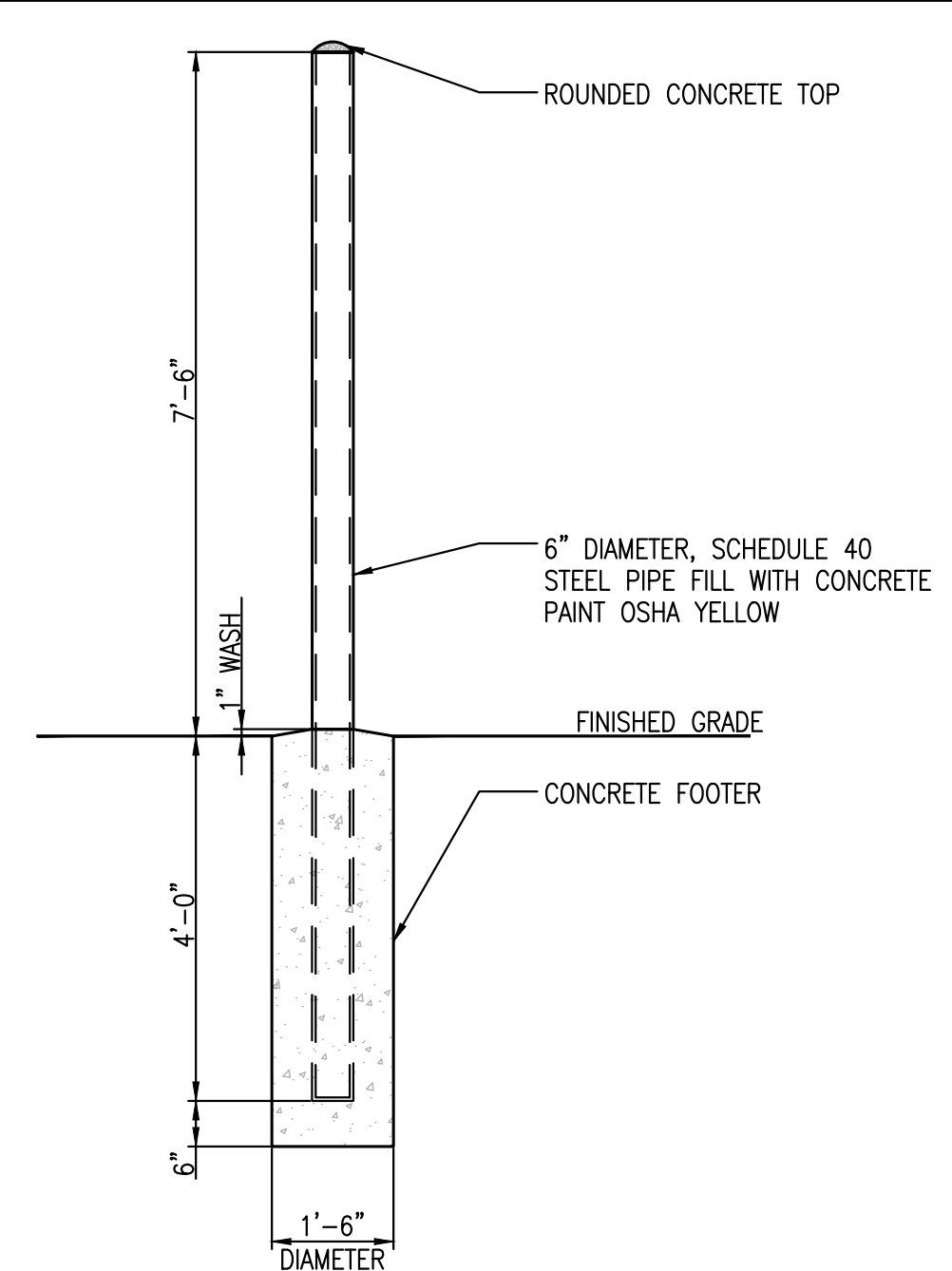


**1D** PEDESTRIAN GATE PLAN VIEW  
N.T.S.

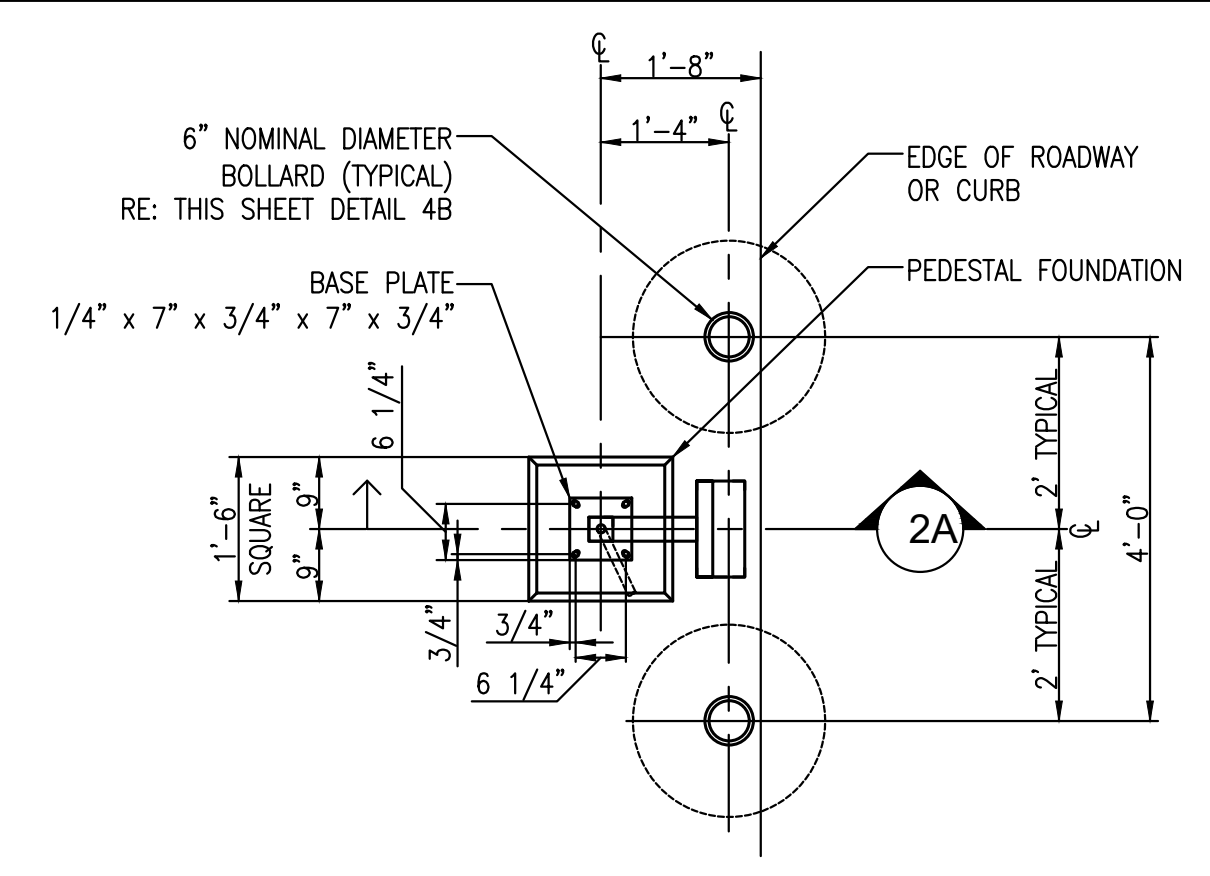
**1** PEDESTRIAN GATE (02830-038)  
N.T.S.



**2A** GATE ENTRY ACCESS PEDESTAL - DUAL HEIGHT - SECTION  
N.T.S.



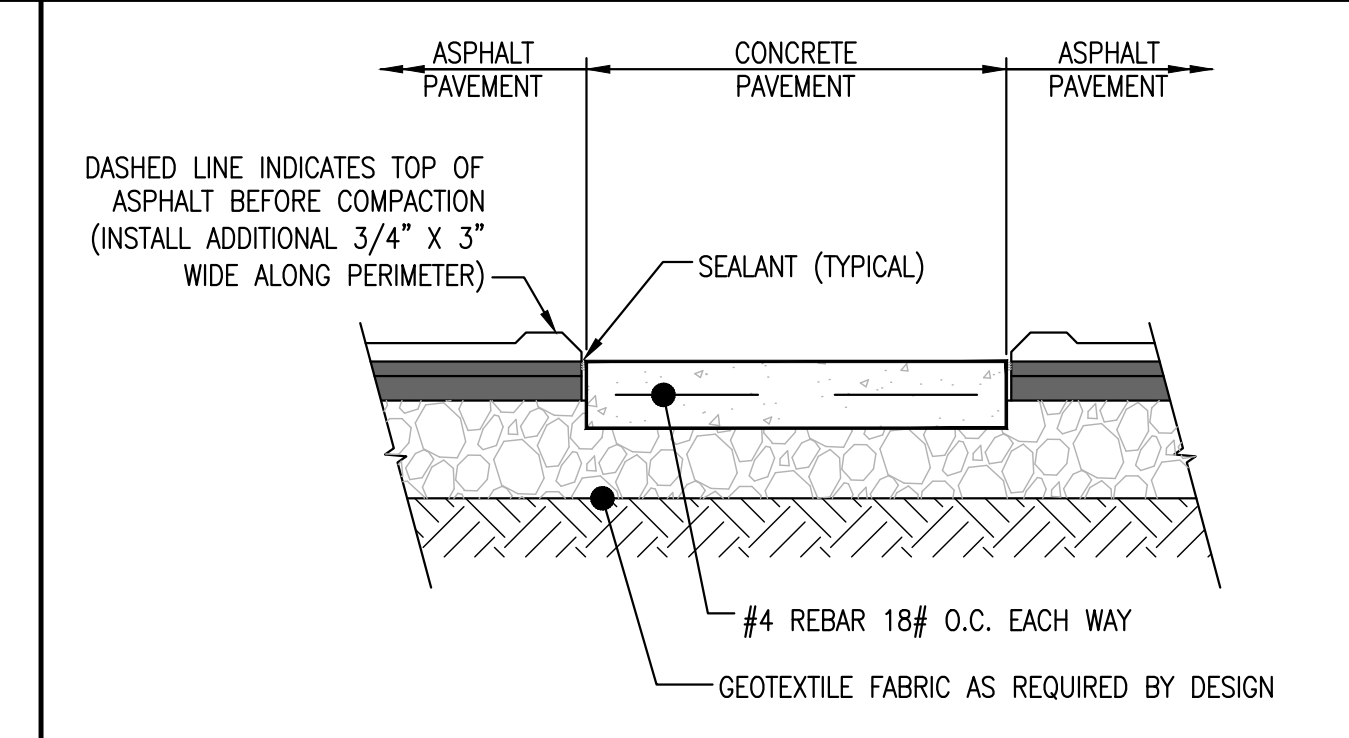
**2B** 6" NOMINAL DIA. EXTENDED BOLLARD SECTION  
N.T.S.



**2C** GATE ENTRY ACCESS PEDESTAL PLAN  
N.T.S.

**2** GATE ENTRY ACCESS PEDESTAL (02830-015)  
N.T.S.

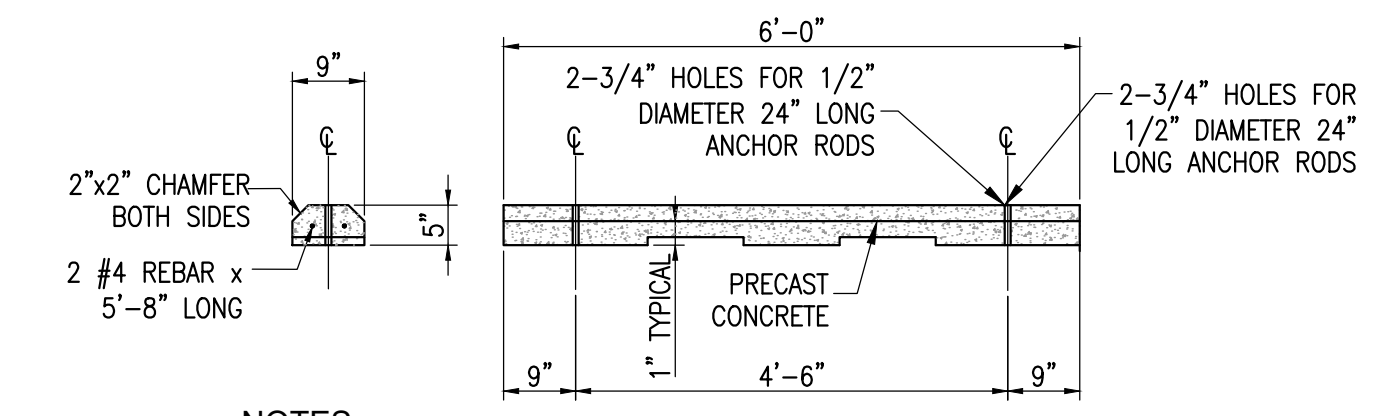
- NOTES:
1. THE MINIMUM DEPTH FOR THE PEDESTAL FOUNDATION SHALL BE 4'-0" BELOW THE FINISHED GRADE ELEVATION AND SHALL BE DESIGNED IN ACCORDANCE WITH THE LOCAL SOIL CONDITIONS AND LOCAL CODES. SAID DESIGN SHALL, WITHOUT EXCEPTION, BE REVIEWED BY LOCAL ENGINEER.
  2. CONDUIT SHALL EXIT FOUNDATION BELOW FROST LINE.
  3. PEDESTAL ARRANGEMENT PROVIDED BY FXG PPS DEPARTMENT AND TYCO-IS



**3** ASPHALT AT CONCRETE SECTION (02510-007)  
N.T.S.

FedEx Ground Paint Schedule	
(FOR ADDITIONAL PAINT SCHEDULES, CONTRACTOR SHALL REFERENCE FXG SPECIFICATIONS MANUAL, DIVISION 2 - SITE WORK) SW = SHERWIN WILLIAMS	
Dock Sill Plates	SW - 7069 - Iron Ore Semi-gloss Except top surface shall be: SW - 4084 - Safety Yellow
Independent Bumper	SW - 7069 - Iron Ore Semi-gloss Except front surface of bumper and legs shall be: SW - 4084 - Safety Yellow
Stairs & Bollards	SW - 4084 - Safety Yellow
Interior Structural Steel	Pro Industrial Zero VOC Acrylic Coating Gloss (B66-600 Series)
Egress Path Striping	SW - 4084 - Safety Yellow
Pavement Striping	S-W, Traffic & Zone Products, SETFAST Acrylic Waterborne
* White: Pedestrian & Auto Parking	Traffic Marking Paint; TM266 - White
* Yellow: Truck Parking, Crosswalks & other Safety or hatched areas	TM227 - Yellow
* Blue: Handicapped Parking	TM266 - Tinted Blue SW - 4084 - Safety Red Malignance, Inc., FASS-Striping Paint, Manufacturer's Standard: 3FX5-W - Snow White 3FS5-Y - Traffic White 3FXBU - Blue

**4** PAINT SCHEDULE  
N.T.S.



- NOTES:
1. CONCRETE AT OWNED FACILITIES
  2. RESIN AT BTS

**5** PARKING BLOCK DETAIL  
N.T.S.

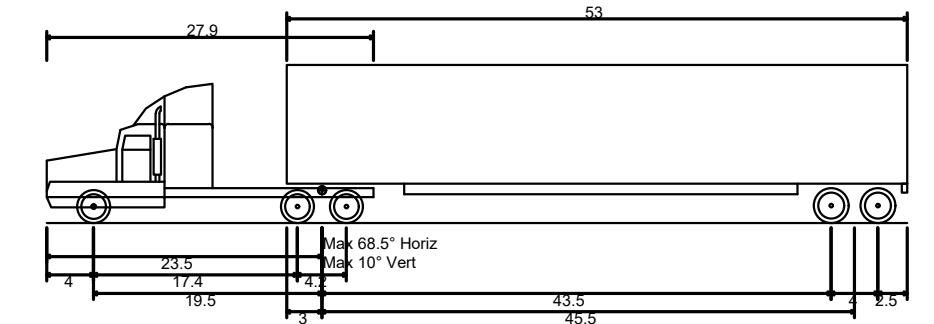
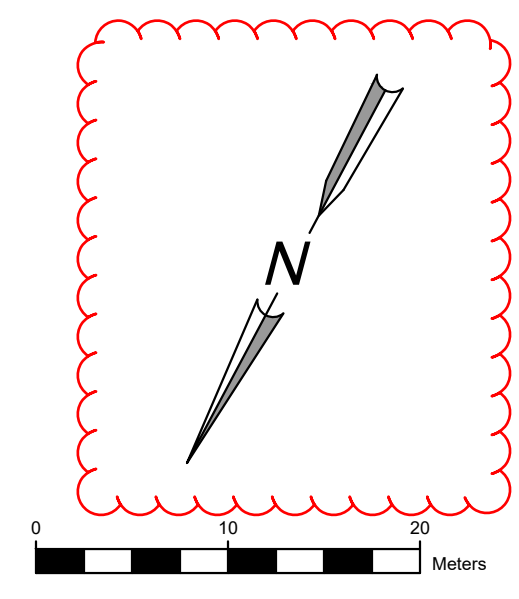
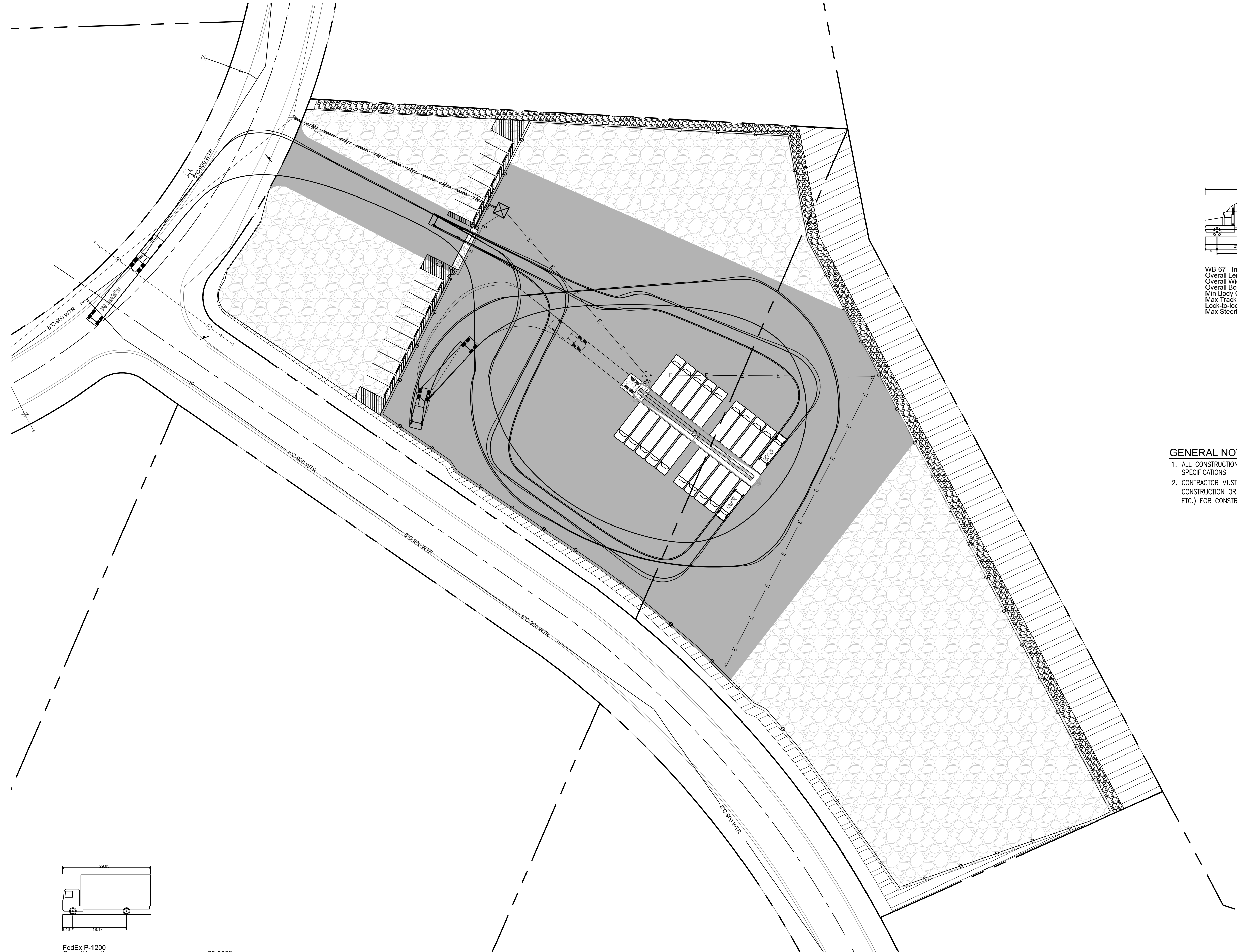
Langford, British Columbia

PROJECT NO: F23-069  
DATE: 07/28/2023  
F23-069 concept.dwg  
-SHEET-  
**3 OF 6**

FOR REVIEW - NOT FOR CONSTRUCTION

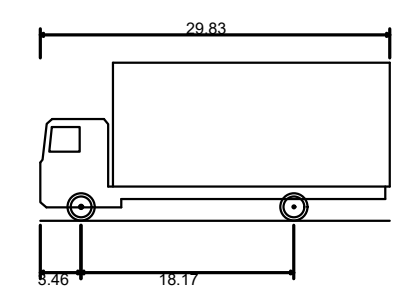
REV	DATE	BY	COMMENT
1	10/25/23	JST	REVISED PER FEDEX COMMENTS
2	07/25/24	JST	REVISED PER FEDEX COMMENTS

Details  
**FedEx Ground Facility**  
**Langford**  
 Centre Mountain Business Park  
 Combined Keycorp 503 And Beecher Bay 310 Lot



WB-67 - Interstate Semi-Trailer  
 Overall Length 73.50ft  
 Overall Width 8.50ft  
 Overall Body Height 13.50ft  
 Min Body Ground Clearance 1.334ft  
 Max Track Width 8.50ft  
 Lock-to-lock time 6.00s  
 Max Steering Angle (Virtual) 28.40°  
**WB-67 SEMI-TRUCK PROFILE**  
 N.T.S.

- GENERAL NOTES:**
1. ALL CONSTRUCTION TO CONFORM TO THE CITY OF LANGFORD BUILDING DEPARTMENT STANDARDS AND SPECIFICATIONS
  2. CONTRACTOR MUST CONTACT CITY OF LANGFORD TRAFFIC OPERATIONS SUPERVISOR PRIOR TO CONSTRUCTION OR PLACEMENT OF TRAFFIC CONTROL DEVICES/FEATURES (STRIPING SIGNALS, MEDIANS, ETC.) FOR CONSTRUCTION IN THE RIGHT OF WAY.



FedEx P-1200  
 Overall Length 29.83ft  
 Overall Width 8.00ft  
 Overall Body Height 13.50ft  
 Min Body Ground Clearance 1.134ft  
 Track Width 6.67ft  
 Lock-to-lock time 6.00s  
 Max Steering Angle (Virtual) 40.00°  
**FEDEX P-1200 PROFILE**  
 N.T.S.

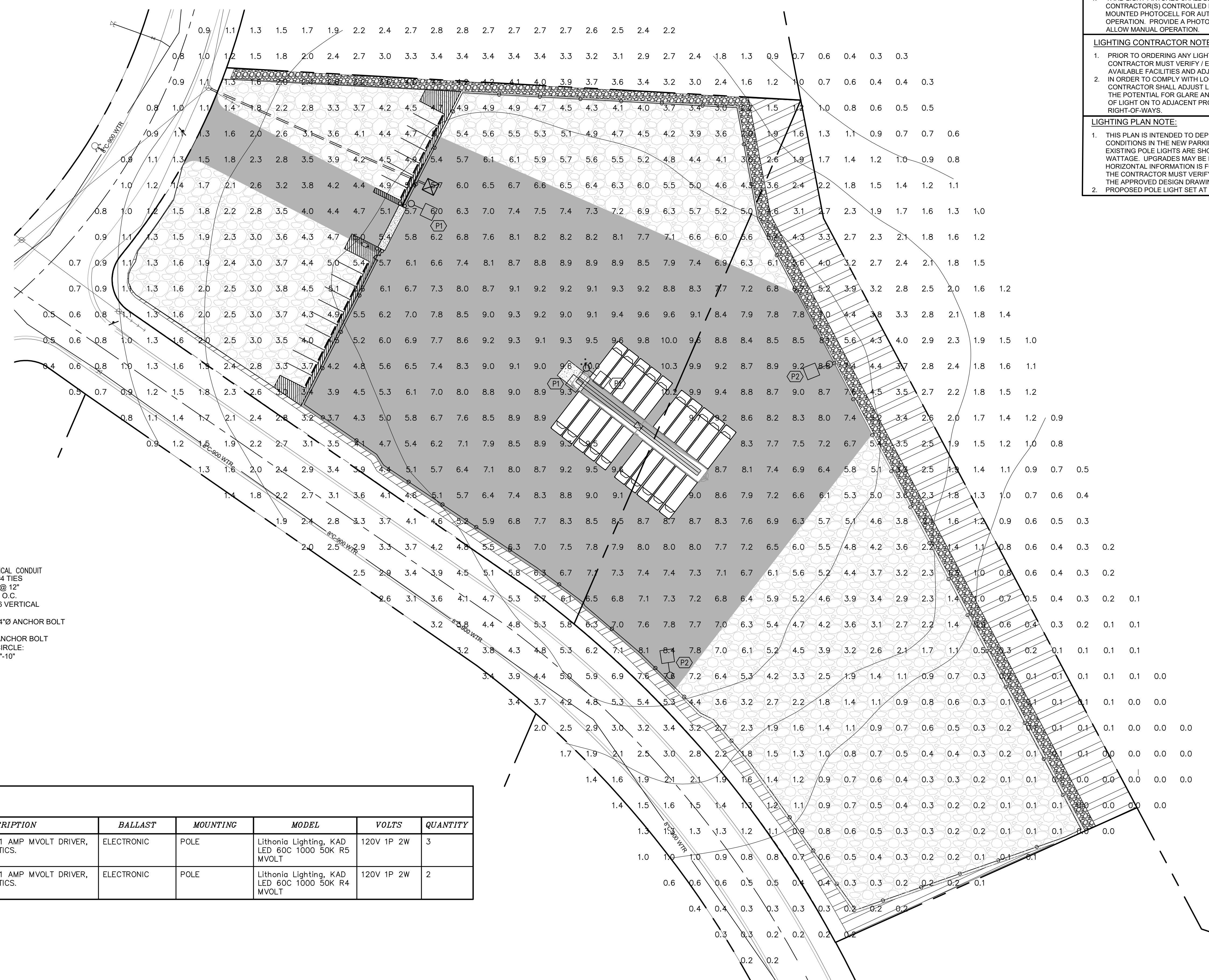
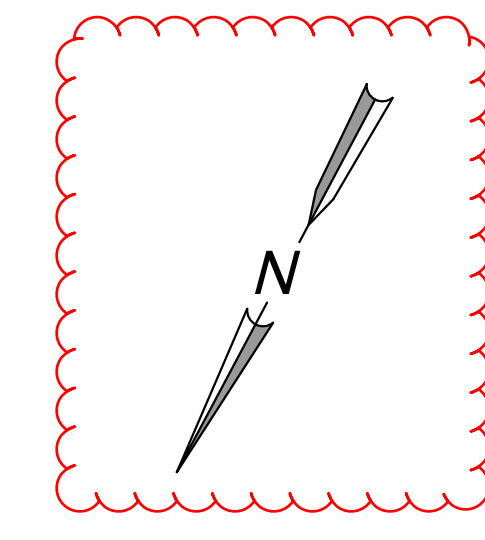
**TRUCK TURN SITE PLAN**  
 SCALE: 1:30

**FOR REVIEW - NOT FOR CONSTRUCTION**

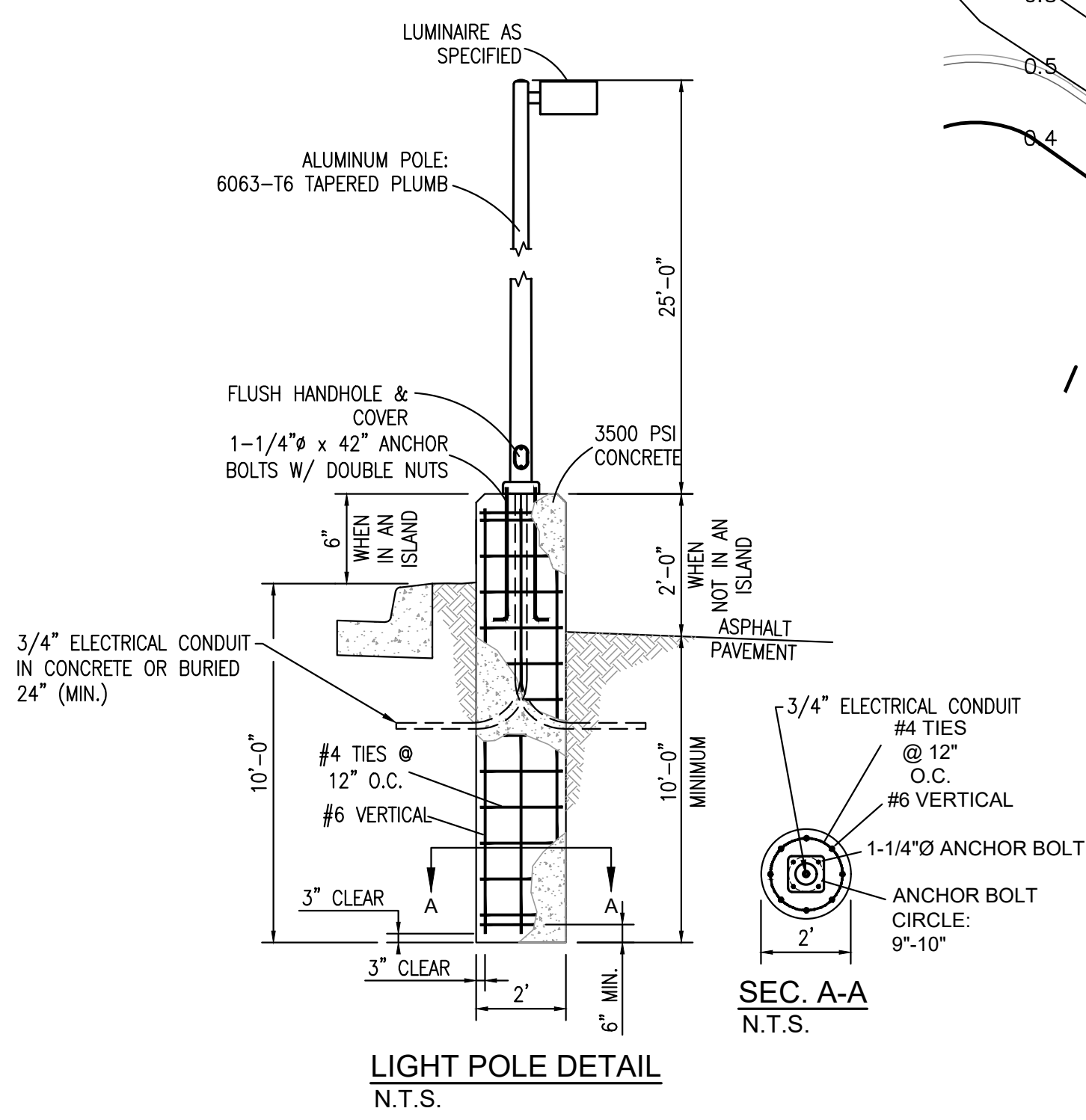
NO.	REVISED BY	DATE	REVISION	BY
1	NOV	07/22/24	REVISED BY ON POINT PROJECT ENGINEERS	JST
2	NOV	07/25/24	REVISED PER FEDEX COMMENTS	JST
1	NOV	10/25/23	REVISED PER FEDEX COMMENTS	JST
			COMMENT	

Truck Turn Site Plan  
**FedEx Ground Facility**  
**Langford**  
 Centre Mountain Business Park  
 Combined Keycorp 503 And Beecher Bay 310 Lot

Langford, British Columbia



- YARD LIGHTING CONTROL:**
- YARD LIGHT FIXTURES SHALL BE OPERATED USING CONTRACTOR(S) CONTROLLED FROM ONE BUILDING MOUNTED PHOTOCELL FOR AUTOMATIC DUSK TO DAWN OPERATION. PROVIDE A PHOTOCELL BYPASS SWITCH TO ALLOW MANUAL OPERATION.
- LIGHTING CONTRACTOR NOTE:**
- PRIOR TO ORDERING ANY LIGHTING RELATED ITEMS - CONTRACTOR MUST VERIFY / ESTABLISH EXISTING AVAILABLE FACILITIES AND ADJUST ACCORDINGLY.
  - IN ORDER TO COMPLY WITH LOCAL ORDINANCES, THE CONTRACTOR SHALL ADJUST LIGHT FIXTURES TO MINIMIZE THE POTENTIAL FOR GLARE AND UNNECESSARY DIFFUSION OF LIGHT ON TO ADJACENT PROPERTIES OR INTO PUBLIC RIGHT-OF-WAYS.
- LIGHTING PLAN NOTE:**
- THIS PLAN IS INTENDED TO DEPICT PROPOSED LIGHTING CONDITIONS IN THE NEW PARKING AREAS ONLY. THE EXISTING POLE LIGHTS ARE SHOWN WITH ASSUMED WATTAGE. UPGRADES MAY BE NECESSARY. ADDITIONAL HORIZONTAL INFORMATION IS FOR REFERENCE ONLY AND THE CONTRACTOR MUST VERIFY ALL INFORMATION WITH THE APPROVED DESIGN DRAWINGS.
  - PROPOSED POLE LIGHT SET AT 27'.



**LUMINAIRE SCHEDULE**

CALLOUT	SYMBOL	LAMP	DESCRIPTION	BALLAST	MOUNTING	MODEL	VOLTS	QUANTITY
P1		(1) 50K P5	KAD LED, 60 LED, 1 AMP MVOLT DRIVER, 5000K, TYPE 5 OPTICS.	ELECTRONIC	POLE	Lithonia Lighting, KAD LED 60C 1000 50K R5 MVOLT	120V 1P 2W	3
P2		(1) 50K P4	KAD LED, 60 LED, 1 AMP MVOLT DRIVER, 5000K, TYPE 4 OPTICS.	ELECTRONIC	POLE	Lithonia Lighting, KAD LED 60C 1000 50K R4 MVOLT	120V 1P 2W	2

**GENERAL PHOTOMETRIC SCHEDULE**

AVERAGE FOOT-CANDLES	3.59
MAXIMUM FOOT-CANDLES	10.3
MINIMUM FOOT-CANDLES	0.0
MINIMUM TO MAXIMUM FC RATIO	0.00
MAXIMUM TO MINIMUM FC RATIO	334.81
AVERAGE TO MINIMUM FC RATIO	116.99

- GENERAL NOTES:**
- ALL CONSTRUCTION TO CONFORM TO THE CITY OF LANGFORD BUILDING DEPARTMENT STANDARDS AND SPECIFICATIONS
  - CONTRACTOR MUST CONTACT CITY OF LANGFORD TRAFFIC OPERATIONS SUPERVISOR PRIOR TO CONSTRUCTION OR PLACEMENT OF TRAFFIC CONTROL DEVICES/FEATURES (STRIPING SIGNALS, MEDIANS, ETC.) FOR CONSTRUCTION IN THE RIGHT OF WAY.
  - ALL DIMENSIONS ARE IN METERS UNLESS OTHERWISE INDICATED.
  - TRUCK LANDING AREA MUST BE LEVEL.

CONCEPT PLAN  
SCALE: 1:10

FOR REVIEW - NOT FOR CONSTRUCTION

NO.	DATE	REVISION	BY
1	07/22/24	REVISED BY ON POINT PROJECT ENGINEERS	NOC
2	07/25/24	REVISED PER FEDX COMMENTS	JST
1	10/25/23	REVISED PER FEDX COMMENTS	JST
		COMMENT	BY

Photometric Lighting Plan  
**FedEx Ground Facility**  
**Langford**  
 Centre Mountain Business Park  
 Combined Keycorp 503 And Beecher Bay 310 Lot

**FedEx**  
Ground  
Langford, British Columbia

PROJECT NO: F23-069  
DATE: 07/28/2023  
123-069 lighting.dwg  
-SHEET-  
**5 OF 6**

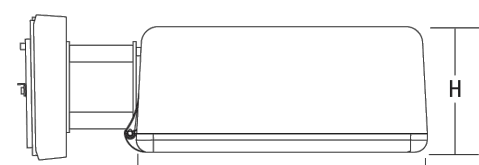


# KAD LED LED Area Luminaire

Notes	Notes
Type	Type

### Specifications

EPA: 1.2 ft<sup>2</sup> (0.11 m<sup>2</sup>)  
 Length: 17-1/2" (44.5 cm)  
 Width: 17-1/2" (44.5 cm)  
 Height: 7-1/8" (18.1 cm)  
 Weight (max): 36 lbs. (16.4 kg)



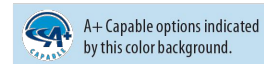
### Capable Luminaire

This item is an A+ capable luminaire, which has been designed and tested to provide consistent color appearance and system-level interoperability.

- All configurations of this luminaire meet the Acuity Brands' specification for chromatic consistency
- This luminaire is A+ Certified when ordered with DTL\* controls marked by a **shaded background**. DTL, DL, equipped luminaires meet the A+ specification for luminaire to photocontrol interoperability!
- This luminaire is part of an A+ Certified solution for ROAM\*2 or XPoint™ Wireless control networks, providing out-of-the-box control compatibility with simple commissioning, when ordered with drivers and control options marked by a **shaded background**.

To learn more about A+, visit [www.acuitybrands.com/plus](http://www.acuitybrands.com/plus).

- A+ Certified Solutions for ROAM require the order of one ROAM node per luminaire. Sold Separately. [Link to Roam](#); [Link to DTL](#)
- A+ Certified Solutions for ROAM require the order of one ROAM node per luminaire. Sold Separately. [Link to Roam](#); [Link to DTL](#)



### Ordering Information

EXAMPLE: KAD LED 40C 1000 40K R5 MVOLT SPD04 DDBXD

KAD LED Series	LEDs	Drive current	CCT	Distribution	Voltage	Mounting	Shipped included	Shipped separately
KAD LED 20C	20 LEDs	530 mA	3000 K	R2 type I	MVOLT 277V	SPD04	Square pole universal mounting adaptor	04' 4" arm DDBXD
KAD LED 30C	30 LEDs	700 mA	4000 K	R3 type II	120V	SPD04	Square pole universal mounting adaptor	06' 4" arm DDBXD
KAD LED 40C	40 LEDs	1000 mA	5000 K	R4 type III	208V	SPD04	Square pole universal mounting adaptor	09' 9" arm DDBXD
KAD LED 60C	60 LEDs	1500 mA	5000 K	R5 type IV	240V	SPD04	Square pole universal mounting adaptor	12' 12" arm DDBXD

Options	Shipped separately	Finish
PERF: NEMA twist-lock five-wire receptacle only (no controls)	PRFICV: Bi-level, motion/ambient sensor, 8-15 mounting height, ambient sensor enabled at 10'	DOBZ: Dark Bronze
PERF: Seven-wire receptacle only (no controls)	PRFICV: Bi-level, motion/ambient sensor, 15-30 mounting height, ambient sensor enabled at 10'	DLBZ: Black
SF: Single fuse (120, 277, 347V)	PRFICV: Bi-level, motion/ambient sensor, 15-30 mounting height, ambient sensor enabled at 10'	DNWX: Natural aluminum
DF: Double fuse (208, 240, 480V)	BL30: Bi-level switched dimming, 10-30 mounting height, ambient sensor enabled at 36"	DNWH: Textured white
PIR: Bi-level, motion/ambient sensor, 8-15 mounting height, ambient sensor enabled at 36"	BL50: Bi-level switched dimming, 10-30 mounting height, ambient sensor enabled at 36"	
PIR: Bi-level, motion/ambient sensor, 15-30 mounting height, ambient sensor enabled at 36"	HS: Hoopside shield	

### Ordering Information

Minimum Part Number	Stock Part Number	Accessories
KAD LED 30C 1000 40K R5 MVOLT PUMBAK DDBXD	KADL 30C 40K R5	DL1347 1.5 CL II Photo: -52 twist-lock (120-277V)
KAD LED 40C 1000 40K R5 MVOLT PUMBAK DDBXD	KADL 40C 40K R5	DL1347 1.5 CL III Photo: -52 twist-lock (147V)
KAD LED 60C 1000 40K R5 MVOLT PUMBAK DDBXD	KADL 60C 40K R5	DL1347 1.5 CL IV Photo: -52 twist-lock (180V)
KAD LED 30C 1000 40K R5 MVOLT PUMBAK PIR DDBXD	KADL 30C 40K R5 PIR	DL1347 1.5 CL II Photo: -52 twist-lock (120-277V)
KAD LED 40C 1000 40K R5 MVOLT PUMBAK PIR DDBXD	KADL 40C 40K R5 PIR	DL1347 1.5 CL III Photo: -52 twist-lock (147V)
KAD LED 60C 1000 40K R5 MVOLT PUMBAK PIR DDBXD	KADL 60C 40K R5 PIR	DL1347 1.5 CL IV Photo: -52 twist-lock (180V)

\*PUMBAK is not standard nomenclature.  
 For round pole mounting (PRD) only. Requires P\* or L\* arm.  
 For round pole mount must be 3.25" O.D. minimum.

### Drilling

Template #5

#### Tenon Mounting Slipfitter \*\*

Temen O.D.	Single Unit	2 at 180°	2 at 120°	2 at 90°	4 at 90°
2-3/8"	120-190	120-280	120-290	120-310	120-390
2-7/8"	125-190	125-280	125-290	125-310	125-390
4"	135-190	135-280	135-290	135-310	135-390

### Drilling

Template #5

#### Tenon Mounting Slipfitter \*\*

Temen O.D.	Single Unit	2 at 180°	2 at 120°	2 at 90°	4 at 90°
2-3/8"	120-190	120-280	120-290	120-310	120-390
2-7/8"	125-190	125-280	125-290	125-310	125-390
4"	135-190	135-280	135-290	135-310	135-390

### Performance Data

#### Lumen Output

Lumen values are from photometric tests performed in accordance with IESNA LM-79. Data is considered to be representative of the configurations shown, within the tolerances allowed by Lighting Facts. Contact factory for performance data on any configurations not shown here.

SLC	Year (arm)	SLC	Year (arm)	SLC	Year (arm)	SLC	Year (arm)
20C	35W	30C	45W	40C	69W	60C	103W
500 mA	35W	700 mA	45W	700 mA	69W	700 mA	103W
500 mA	59W	500 mA	59W	500 mA	59W	500 mA	59W
30C	700 mA	69W	1000 mA	108W	500 mA	71W	40C
700 mA	69W	1000 mA	108W	500 mA	71W	40C	
500 mA	71W	700 mA	94W	1000 mA	141W	500 mA	103W
700 mA	94W	1000 mA	141W	500 mA	103W	700 mA	137W
500 mA	103W	700 mA	137W	1000 mA	216W	500 mA	216W
700 mA	137W	1000 mA	216W	500 mA	216W	700 mA	216W

### Performance Data

#### Lumen Ambient Temperature (LAT) Multiplier

Use these factors to determine relative lumen output for average ambient temperatures from 40°C (104°F).

Ambient	Multiplier	Ambient	Multiplier
40°C	1.00	50°C	1.01
50°C	1.01	60°C	1.02
60°C	1.02	70°C	1.03
70°C	1.03	80°C	1.04
80°C	1.04	90°C	1.05
90°C	1.05	100°C	1.06

#### Projected LED Lumen Maintenance

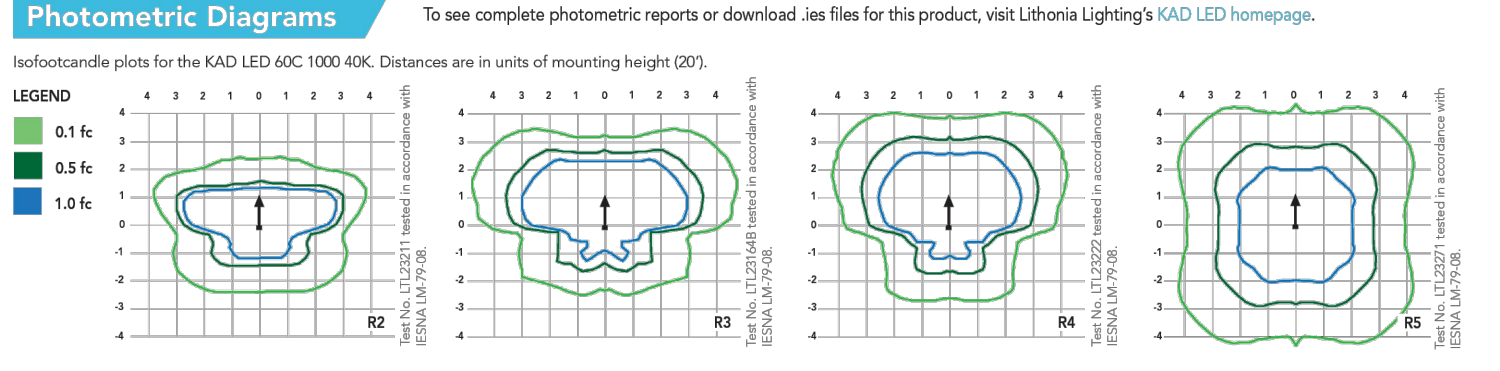
Data represents the expected performance projection for the KAD LED platform in a 25°C ambient, based on 10,000 hours of LED testing performed per IESNA LM-80 and projected per IESNA TM-21-11.

Operating Hours	KAD LED 60C 1000	KAD LED 40C 1000	KAD LED 30C 1000
1.0	0.91	0.86	0.76
1.0	0.93	0.88	0.79
1.0	0.96	0.97	0.84

#### Electrical Load

Temp (°F)	Temp (°C)	120	208	240	277	347	480
30	10	330	35	0.30	0.18	0.16	0.15
40	20	390	45	0.39	0.23	0.20	0.18
50	30	460	55	0.46	0.28	0.24	0.21
60	40	530	65	0.54	0.34	0.29	0.25
70	50	610	80	0.61	0.41	0.34	0.29
80	60	700	95	0.70	0.49	0.41	0.34
90	70	800	115	0.80	0.58	0.49	0.41
100	80	900	135	0.90	0.68	0.58	0.49

### Photometric Diagrams



### FEATURES & SPECIFICATIONS

**INTENDED USE**  
 The energy savings and long life of the KAD LED area luminaire make it a reliable choice for illuminating streets, walkways, parking lots, and surrounding areas.

**CONSTRUCTION**  
 Single-piece die-cast aluminum housing with contoured edges has a 0.12" nominal wall thickness. Die-cast door frame has an impact-resistant, tempered glass lens that is fully gasketed with one piece tubular silicone.

**FINISH**  
 Exterior parts are protected by a zinc-flashed Super Durable TIGC thermoplastic powder coat finish that provides superior resistance to corrosion and weathering. A tightly controlled multi-stage process ensures a minimum 3-mil thickness for a finish that can withstand extreme climate changes without cracking or peeling.

**OPTICS**  
 Precision-molded refractive acrylic lenses are available in four distributions. Light beams are available in standard 4000K, 5000K or 5000K (DCI) configurations.

**ELECTRICAL**  
 Light engine consists of high-efficiency LEDs mounted to a metal core circuit board and aluminum heat sink, ensuring optimal thermal management and long life. Class 1 electronic driver has a power factor >90%, THD <20%, and has an expected life of 100,000 hours with <1% lumen loss. Easy-to-service access protection device meets a minimum Category C Low Spur ANSI/IEEE C62.41.2.

**INSTALLATION**  
 Included universal mounting block and extruded aluminum arm facilitate quick and easy installation using nearly any existing drilling pattern. Stainless steel bolts fasten the luminaire to the mounting block securing it to poles or walls. The KAD LED can be retrofitted on a 1.5" G-rotation load rating per ANSI C136.31. The KAD LED also utilizes the standard K-Series (Temple #4) for pole drilling.

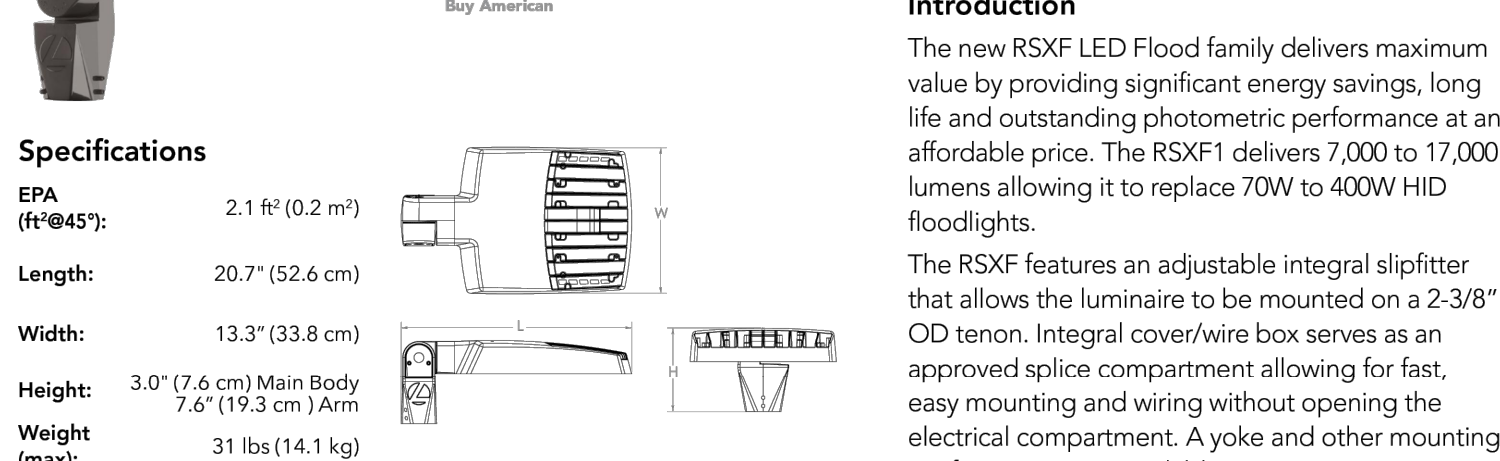
**LISTINGS**  
 CSA certified to U.S. and Canadian standards. Luminaire is PMS rated. Rated for 40°C minimum ambient.

**DESIGNLIGHTS Consortium (DLCC) qualified product.** Not all versions of this product may be DLCC qualified. Please check the DLCC Qualified Products List at [www.designlights.org/DLCC](http://www.designlights.org/DLCC) to confirm which versions are qualified.

**WARRANTY**  
 5-year limited warranty. Complete warranty terms located at: [www.acuitybrands.com/CustomerResource/Forms\\_and\\_docs.aspx](http://www.acuitybrands.com/CustomerResource/Forms_and_docs.aspx).

**Note:** Actual performance may differ as a result of end-user environment and application. All values are design or typical values, measured under laboratory conditions at 25 °C. Specifications subject to change without notice.

### RSXF1 LED Floodlight



### Ordering Information

EXAMPLE: RSXF1 LED P4 40K WFL MVOLT IS DDBXD

Series	Performance Package	Color Temperature	Distribution	Voltage	Mounting
RSXF1 LED	P1	30K 3000K	AWFO: Area Wide Flood	MVOLT (120V-277V)	IS Adjustable slipfitter (fits 2-3/8" OD tenon)
	P2	40K 4000K	WFL: Wide Flood	MVOLT (347V-480V)	WFLC: Side with 16-3/16" cont. 20"
	P3	50K 5000K	MFL: Medium Flood	XVOLT (277V-480V)	ASAP: Adjustable slit arm square pole mounting
	P4		NFL: Narrow Flood		AARP: Adjustable slit arm round pole mounting
			SP: Spot		AAWS: Adjustable slit arm wall bracket
			NSP: Narrow Spot		ANWS: Adjustable slit arm wall bracket and surface condenser box

### Options

Shipped/Installed	Shipped/Installed	Finish
PERF: Photocell, button style	NZARB: Night AR generation 2	DOBZ: Dark Bronze
PERF: Seven-wire twist-lock receptacle only (no controls)	PRBR: Bi-level, motion/ambient sensor (for use with NZARB)	DLBZ: Black
CE34: Conduit entry 3/4" NPT (Qty 2)	BAA: Buy American/Act Compliant	DNWX: Natural Aluminum
DF: Double fuse (208, 240, 480V)		DNWB: Textured Dark Bronze
SP: Single fuse (120, 277, 347V)		DLBRO: Textured Black
DF: Double fuse (208, 240, 480V)		DNWAL: Textured Natural Aluminum
SPD03K: 200V Surge pack (UL95 standard)		DNWGD: Textured White
FAG: Field adjustable output		
DMO: 0-10V dimming extend out back of housing for external control (ordered separately)		

### Ordering Information

#### Accessories

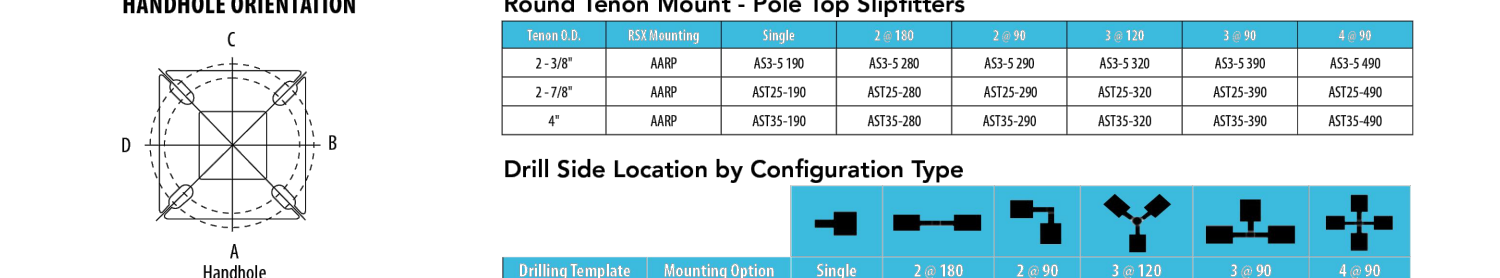
Ordered and shipped separately.

Part Number	Description
DS0770	Drill hole template
RSXF10	RSXF10
RSXFB1	RSXFB1
RSXFB2	RSXFB2
RSXFB3	RSXFB3
DL1347 1.5 CL II	Photo: -52 twist-lock (120-277V)
DL1347 1.5 CL III	Photo: -52 twist-lock (147V)
DL1347 1.5 CL IV	Photo: -52 twist-lock (180V)



### Pole/Mounting Information

Accessories including ballroom, cross arms and other adapters are available under the accessories tab at Lithonia's Outdoor Poles and Arms product page. Click here to visit Accessories.



### RSXF1 - Luminaire EPA

\*Includes luminaire and integral mounting arm. Other tenons, arms, brackets or other accessories are not included in this EPA data.

Fixture Quantity & Mounting Configuration	SLC	Year (arm)	SLC	Year (arm)	SLC	Year (arm)	SLC	Year (arm)
2-3/8" ARP	AS3-190	AS3-190	AS3-190	AS3-190	AS3-190	AS3-190	AS3-190	AS3-190
2-7/8" ARP	AS35-190	AS35-280	AS35-290	AS35-310	AS35-390	AS35-400	AS35-400	AS35-400
4" ARP	AS35-190	AS35-280	AS35-290	AS35-310	AS35-390	AS35-400	AS35-400	AS35-400

FOR REVIEW - NOT FOR CONSTRUCTION

REV	DATE	BY	COMMENTS
2	07/25/24	JST	REVISED PER FEDEX COMMENTS
1	10/25/23	JST	REVISED PER FEDEX COMMENTS
			COMMENTS

Photometric Lighting Details  
**FedEx Ground Facility**  
**Langford**  
 Centre Mountain Business Park  
 503 And Beecher Bay, 310 Lot  
 Combined Keycorp

PROJECT NO: F23-069  
 DATE: 07/28/2023

123-069 lighting.dwg

-SHEET-

6 OF 6



Langford, British Columbia