

Studio 531 architects inc.
546 Herald Street, Victoria BC V8W 1S6
(250) 384 2131 info@studio531.ca

All drawings and related documents are the copyright property of Studio 531 Architects Inc. and must be returned upon request. This drawing cannot be used, modified or copied without the expressed written consent of the Architect. Reproductions of drawings and related documents in part or in whole is forbidden without the Architect's written permission.

NOTES
NOT FOR CONSTRUCTION

ISSUE
01 ISSUED FOR REZONING

CLIENT
1287572 BC Ltd. Pary Dulai - Amrik Singh - Nurinder Singh
112-13045-84 Ave
Surrey, BC
V3W 1B2

CONSULTANTS
LANDSCAPE: Lombard North Group (B.C.) Inc.
838 Cormorant Street
Victoria, B.C. V8W 1R1
Phone: (250) 386 3336
Fax: (250) 386 4132

STAKEHOLDERS

PROFESSIONAL SEAL



March 8, 2024

PROJECT
2691 Sooke Rd, Langford, BC.

DRAWING TITLE
BUILDING ELEVATIONS

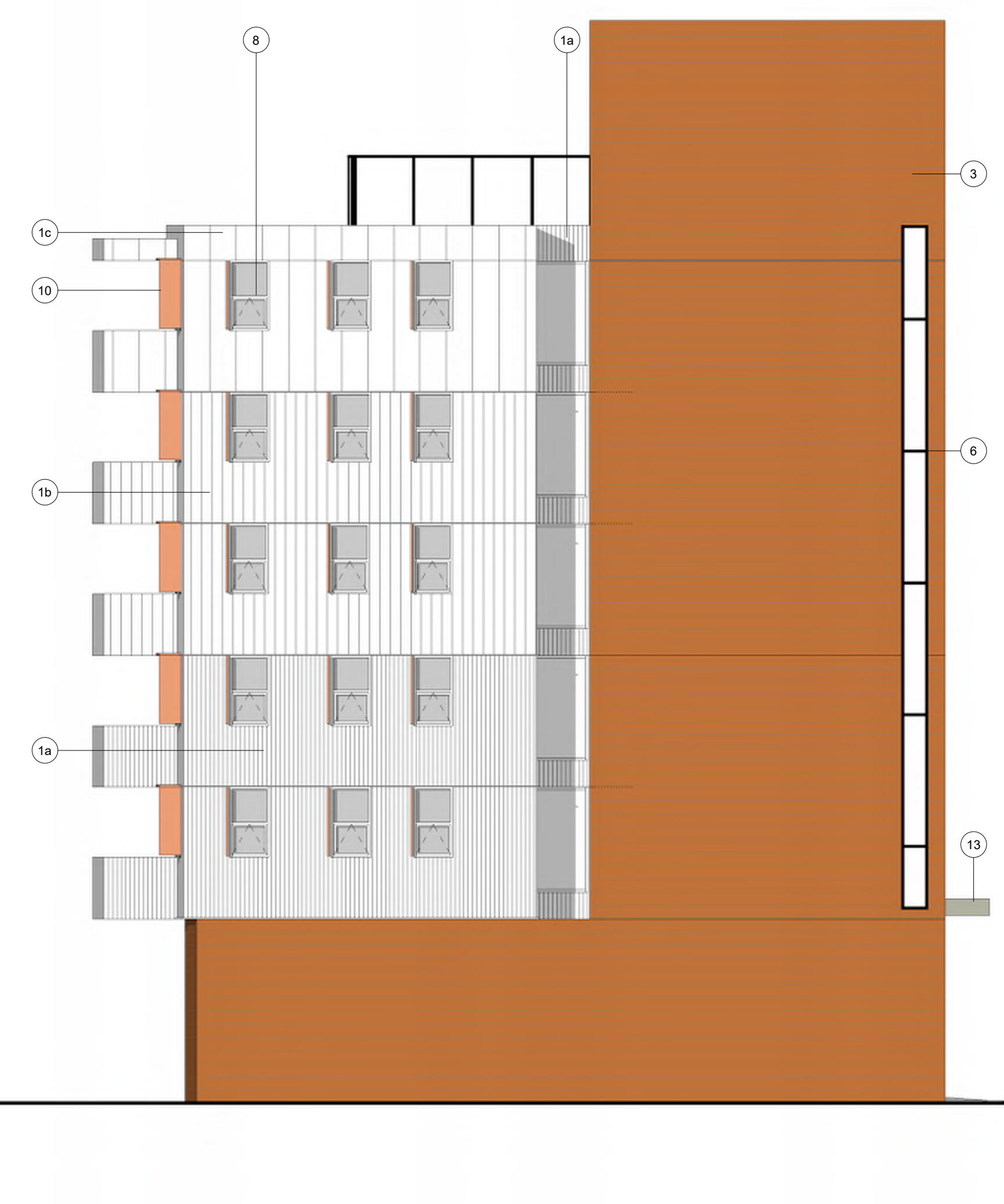
DRAWN BY	SS31	CHECKED BY	XX
SCALE	As indicated	DATE	Issue Date
PROJECT NO.	22-294	SHEET NO.	RZ 3.0



1 NORTH ELEV.
A101 RZ 3.0 1:100

ELEVATION LEGEND

- 01 METAL CLADDING - WHITE
01a = corrugated
01b = 200mm wide panel
01c = 500mm wide panel
- 02 METAL CLADDING - CHARCOAL
- 03 FAUX WOOD SIDING
- 04 CEMENTITIOUS PANELS - GREY
- 05 CONCRETE FACED INSULATION
- 06 ALUMINUM CURTAIN WALL SYSTEM - ANODIZED BLACK
- 07 OVERHEAD GARAGE DOOR - POLYCARBONAT
- 08 VINYL WINDOW - BLACK
- 09 VINYL WINDOW - WHITE
- 10 ALUMINUM SHADING - POWERCOATED
- 11 ALUMINUM GUARDRAIL - POWDER COATED BLACK / GLASS



2 EAST ELEV.
A101 RZ 3.0 1:100



3 Elevation N-E
RZ 3.0



Aluminum Siding



Metal Panel Cladding



Charcoal Metal Panel



Studio 531 architects inc.
 546 Herald Street, Victoria BC V8W 1S6
 (250) 384 2131 info@studio531.ca

All drawings and related documents are the copyright property of Studio 531 Architects Inc. and must be returned upon request. This drawing cannot be used, modified or copied without the expressed written consent of the Architect. Reproductions of drawings and related documents in part or in whole is forbidden without the Architect's written permission.

NOTES
 NOT FOR CONSTRUCTION

ISSUE
 01 ISSUED FOR REZONING

CLIENT
 1287572 BC Ltd. Pary Dulai - Amrik Singh - Nurinder Singh
 112-13045-84 Ave
 Surrey, BC
 V3W 1B2

CONSULTANTS
LANDSCAPE: Lombard North Group (B.C.) Inc.
 836 Cormorant Street
 Victoria, B.C. V8W 1R1
 Phone: (250) 386 3336
 Fax: (250) 386 4132

STAKEHOLDERS

PROFESSIONAL SEAL



March 8, 2024

PROJECT
 2691 Sooke Rd, Langford, BC.

DRAWING TITLE
 BUILDING ELEVATIONS

DRAWN BY	SS31	CHECKED BY	XX
SCALE	1:100	DATE	Issue Date

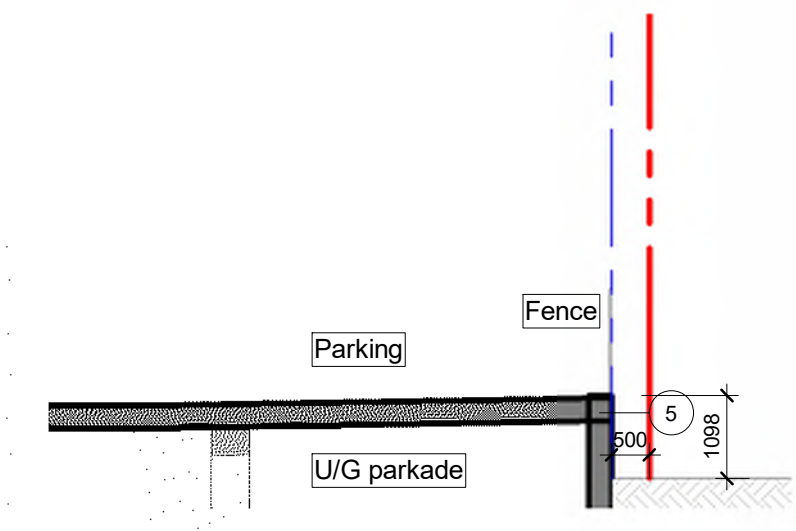
PROJECT NO.	SHEET NO.
22-294	RZ 3.1



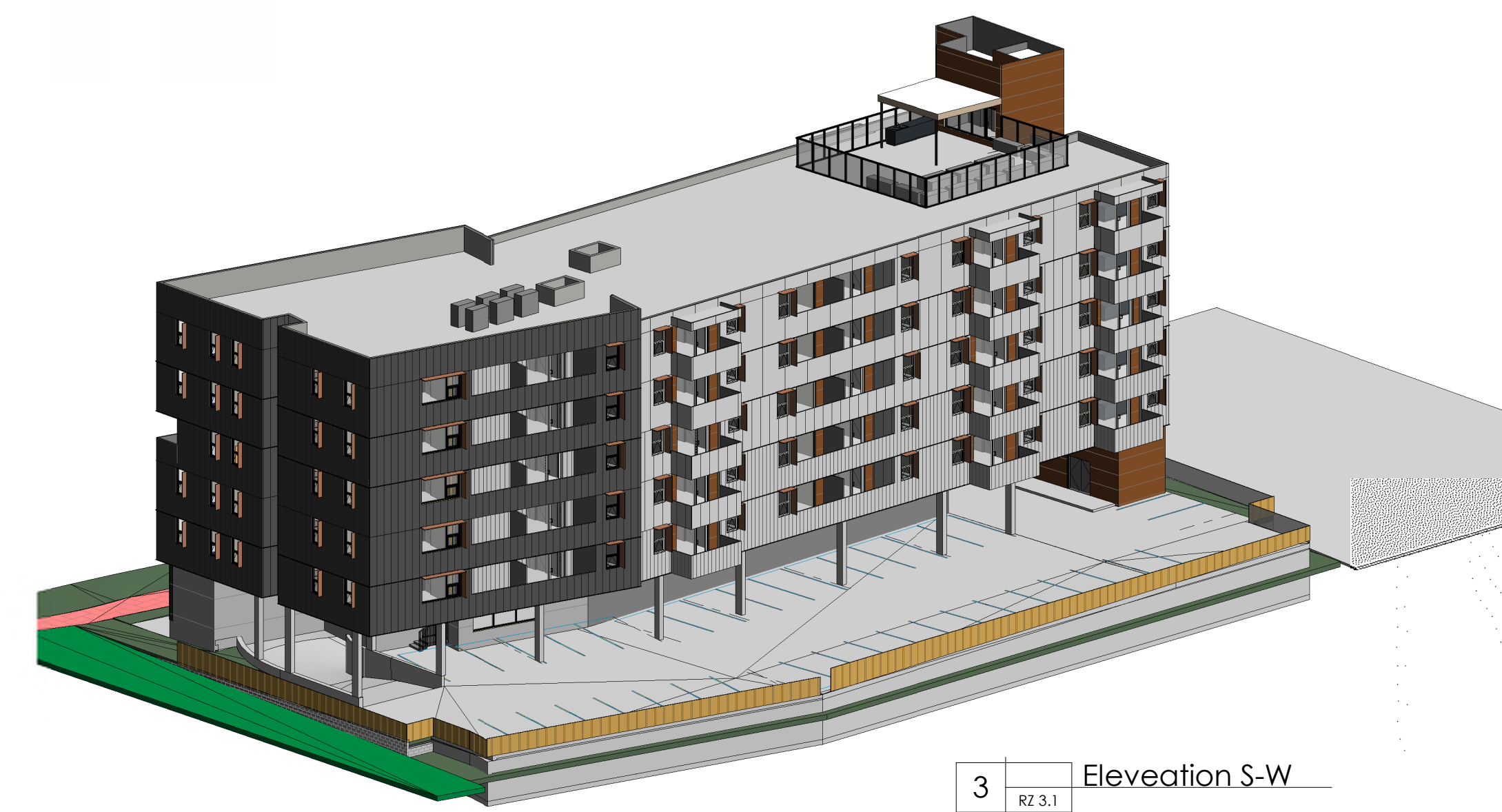
1 A101 SOUTH ELEV
 RZ 3.1 1:100



2 A101 WEST ELEV.
 RZ 3.1 1:100



6 A101 MULTI PARKING ELEV SIDE
 RZ 3.1 1:100



3 RZ 3.1 Elevation S-W



VIEW FROM SOOKE RD - WEST ELEVATION



VIEW FROM SOOKE RD - EST ELEVATION



VIEW FROM SOOKE RD - ENTRANCE



VIEW FROM SOOKE RD



VIEW FROM REAR PARKING - SOUTH ELEVATION



VIEW FROM REAR TOWNHOUSE PRIVATE GARDEN



Studio 531 architects inc.
546 Herald Street, Victoria BC V8W 1S6
(250) 384 2131 info@studio531.ca

All drawings and related documents are the copyright property of Studio 531 Architects Inc. and must be returned upon request. This drawing cannot be used, modified or copied without the expressed written consent of the Architect. Reproductions of drawings and related documents in part or in whole is forbidden without the Architect's written permission.

NOTES

NOT FOR CONSTRUCTION

ISSUE

01 ISSUED FOR REZONING

CLIENT

1287572 BC Ltd. Pary Dulai - Amrik Singh - Nurinder Singh
112-13045-84 Ave
Surrey, BC
V3W 1B2

CONSULTANTS

LANDSCAPE: Lombard North Group (B.C.) Inc.
836 Cormorant Street
Victoria, B.C. V8W 1R1
Phone: (250) 386 3336
Fax: (250) 386 4132

STAKEHOLDERS

PROFESSIONAL SEAL



March 8, 2024

PROJECT
2691 Sooke Rd, Langford, BC.

DRAWING TITLE

3D VISUALS

DRAWN BY: 5531 CHECKED BY: XX

SCALE: DATE: Issue Date

PROJECT NO.: SHEET NO.

22-294 RZ 4.1