

# THE STATE OF LANGFORD'S URBAN FOREST

## COUNCIL MEETING

APRIL 15, 2024







STATE OF THE URBAN FOREST

# Agenda

- 1 State of the Urban Forest
- 2 UFMP: Phase 1 engagement
- 3 UFMP: Next steps

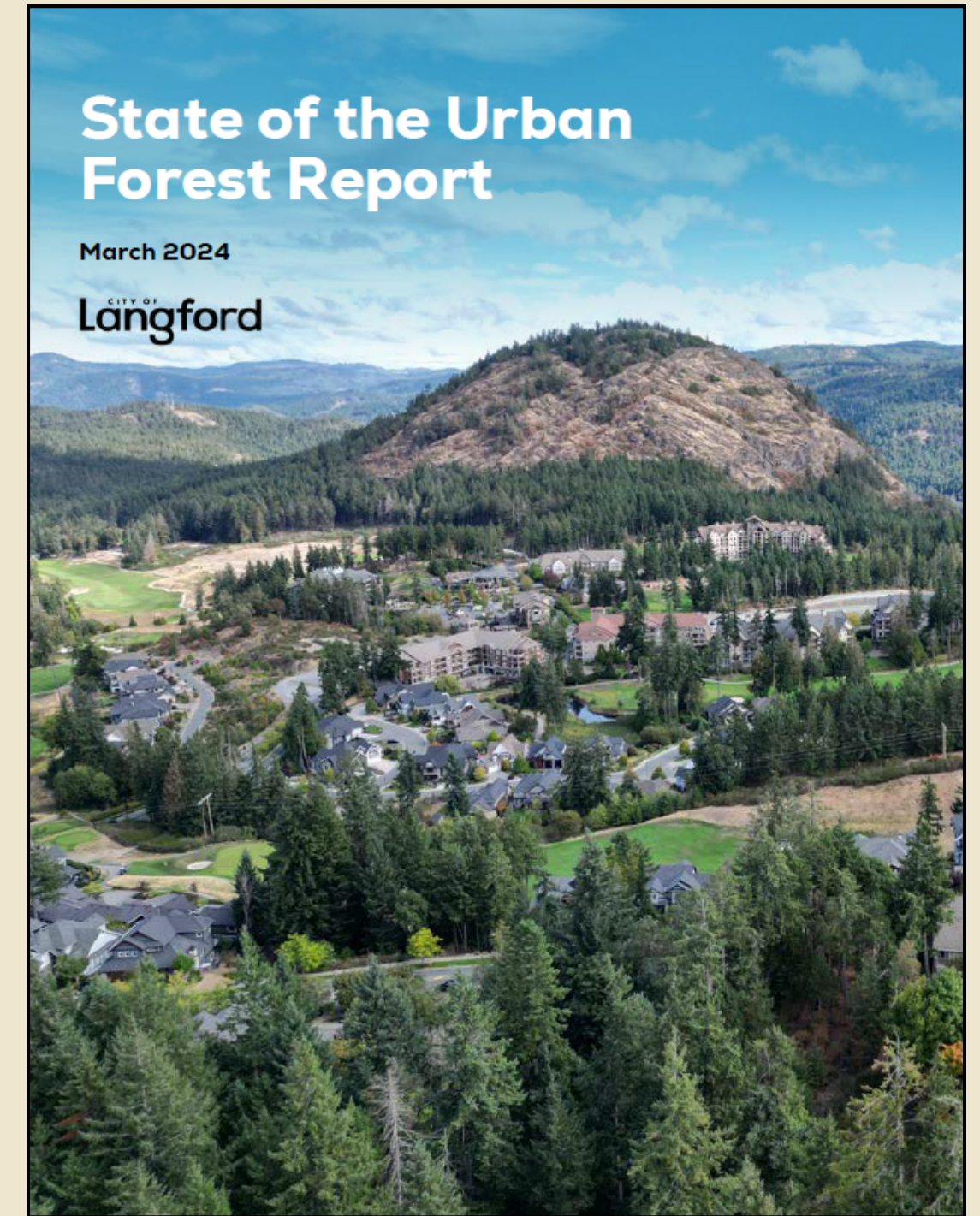






STATE OF THE URBAN FOREST

# Where We Are



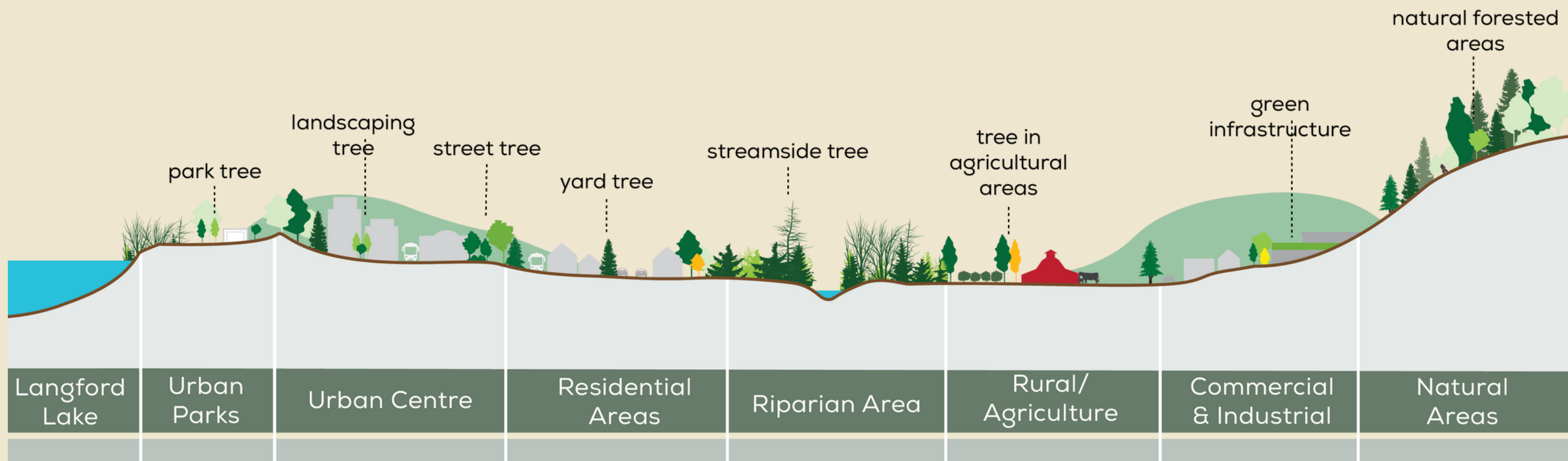




STATE OF THE URBAN FOREST

# Where We Are

## What is an urban forest?







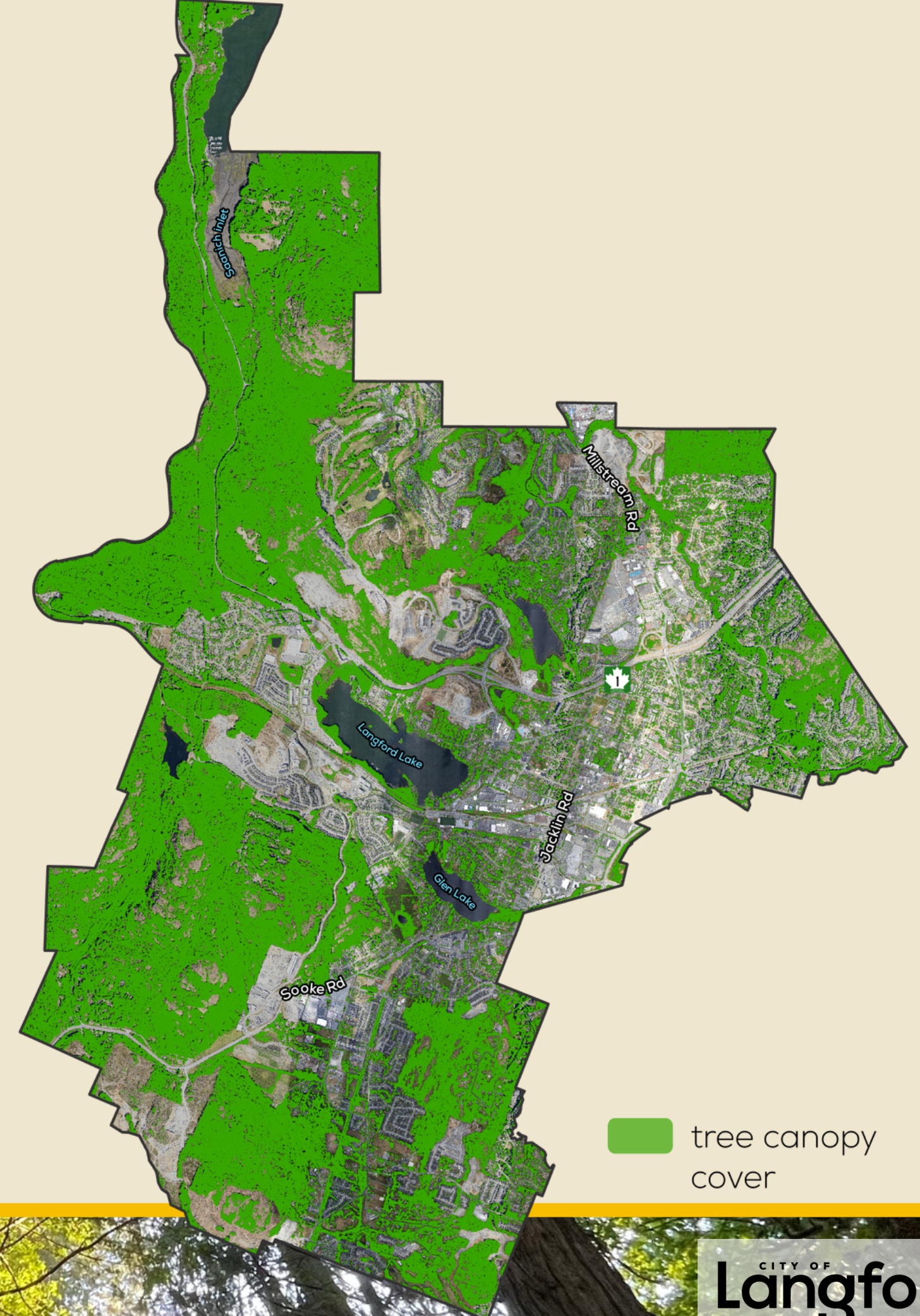
STATE OF THE URBAN FOREST

## Where We Are



## Canopy cover mapping

- A metric to assess the quantity and extent of the urban forest
- Area occupied by tree crown when viewed from above
- Estimated using Light Detection and Ranging (LiDAR) + aerial imagery from 2023







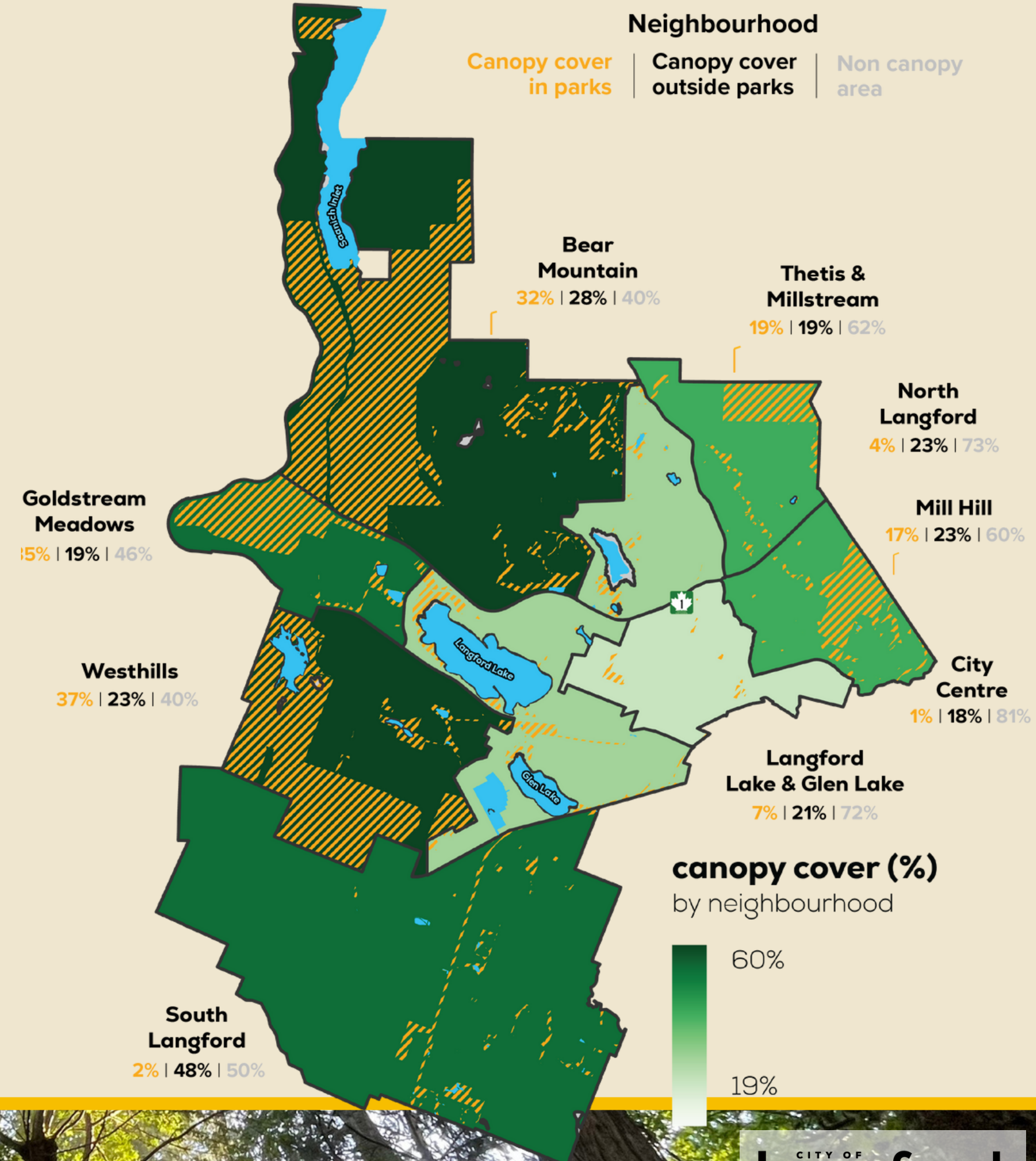
STATE OF THE URBAN FOREST

## Where We Are



## Canopy by neighbourhood

- 48% canopy cover city-wide (1,983 ha)
- Parks contain 737 ha (37%) of total canopy cover
  - More than half that Provincial (Goldstream)
- More than 50% of total canopy is on private land







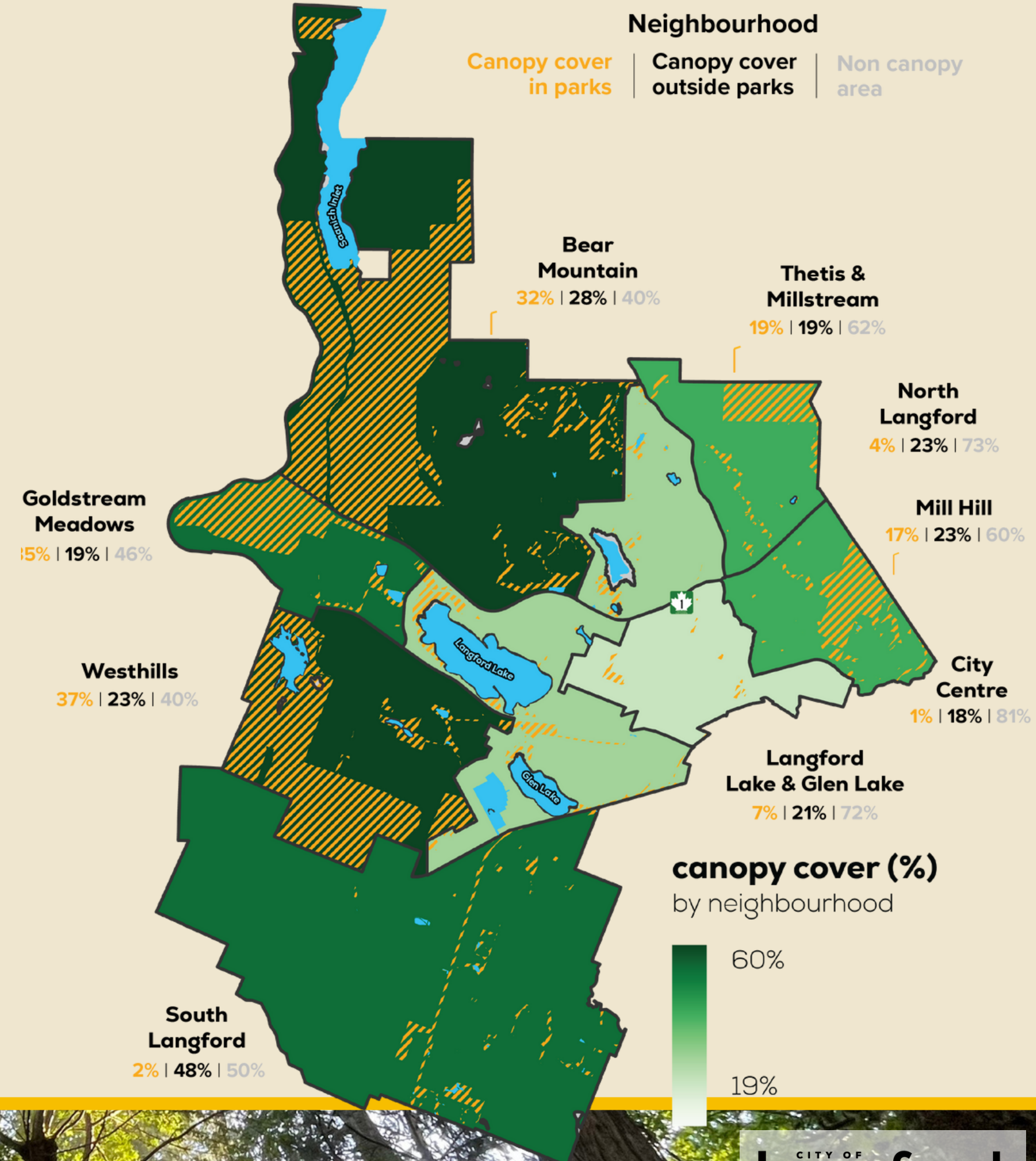
STATE OF THE URBAN FOREST

## Where We Are



## Canopy by neighbourhood

- 48% canopy cover city-wide (1,983 ha)
- Parks contain 737 ha (37%) of total canopy cover
  - More than half that Provincial (Goldstream)
- More than 50% of total canopy is on private land







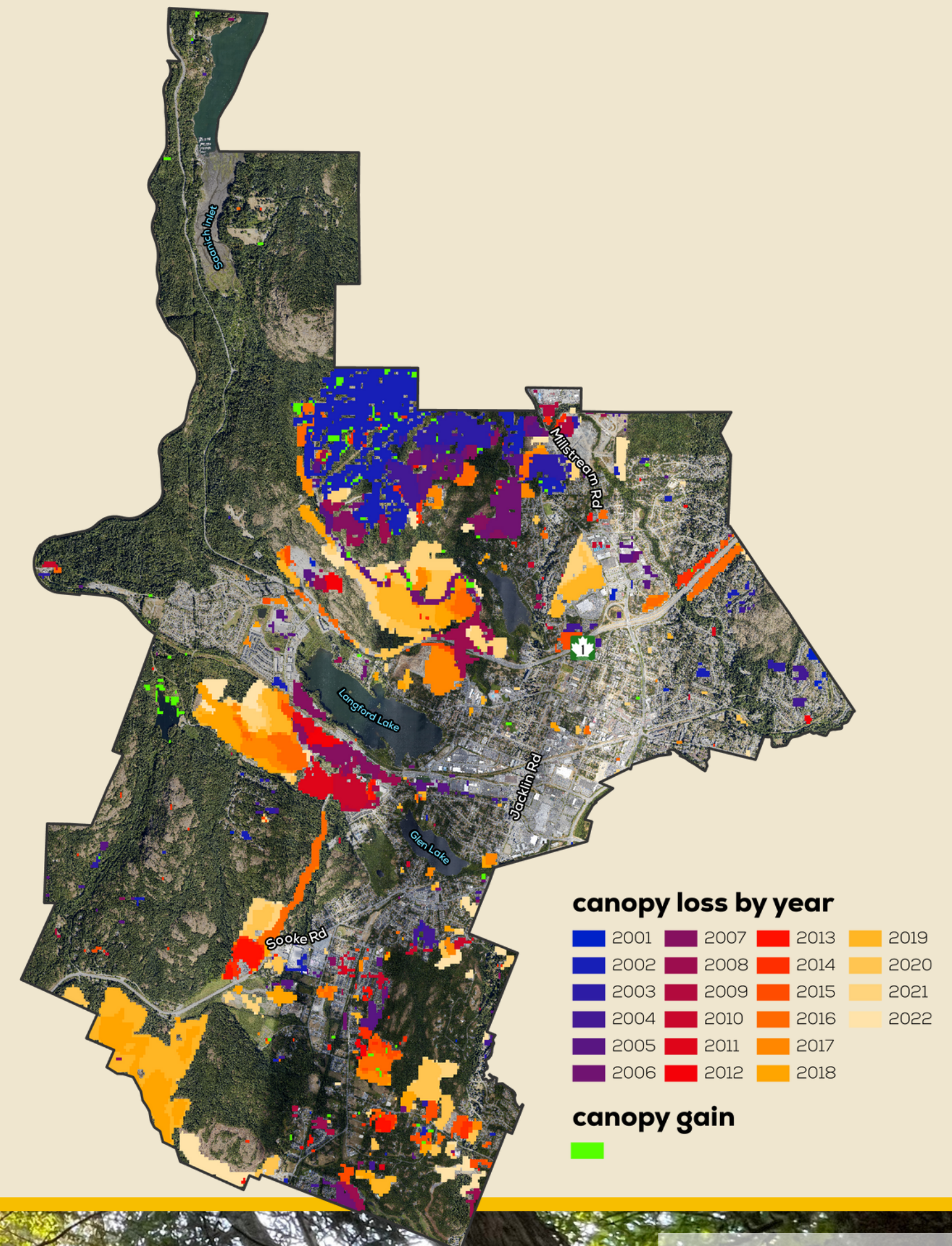
STATE OF THE URBAN FOREST

# Where We Are



## Canopy change

- Since 2000:
  - canopy loss concentrated on Bear Mountain, in the Westhills, and in South Langford
  - canopy gain on Bear Mountain







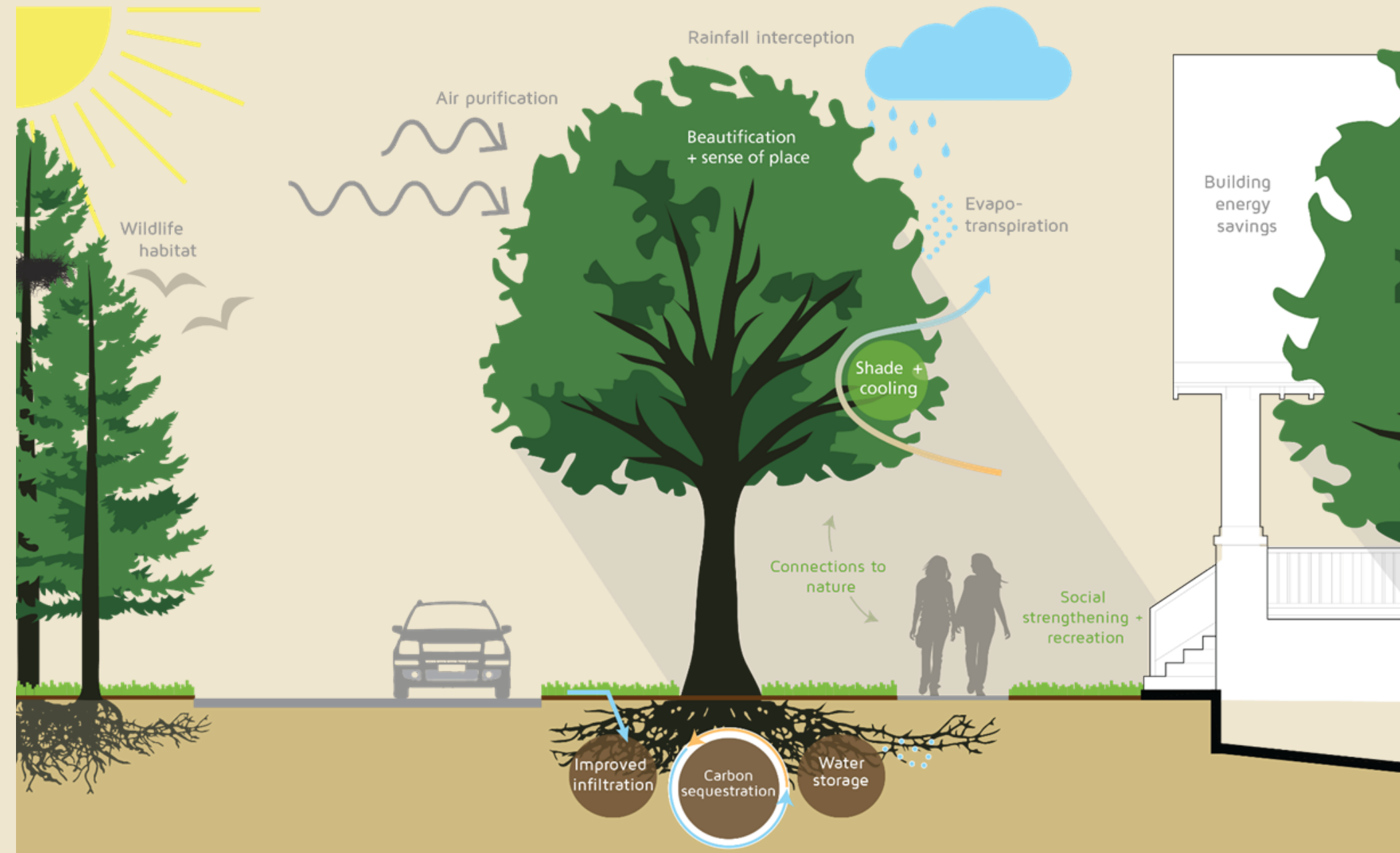
STATE OF THE URBAN FOREST

## Where We Are

# Why do we need trees in cities?

### Trees provide many benefits:

- Provide habitat for wildlife
- Reduce the urban heat island effect
- Enhance air quality
- Provide recreational space
- Improve mental and physical health
- Stabilize steep slopes

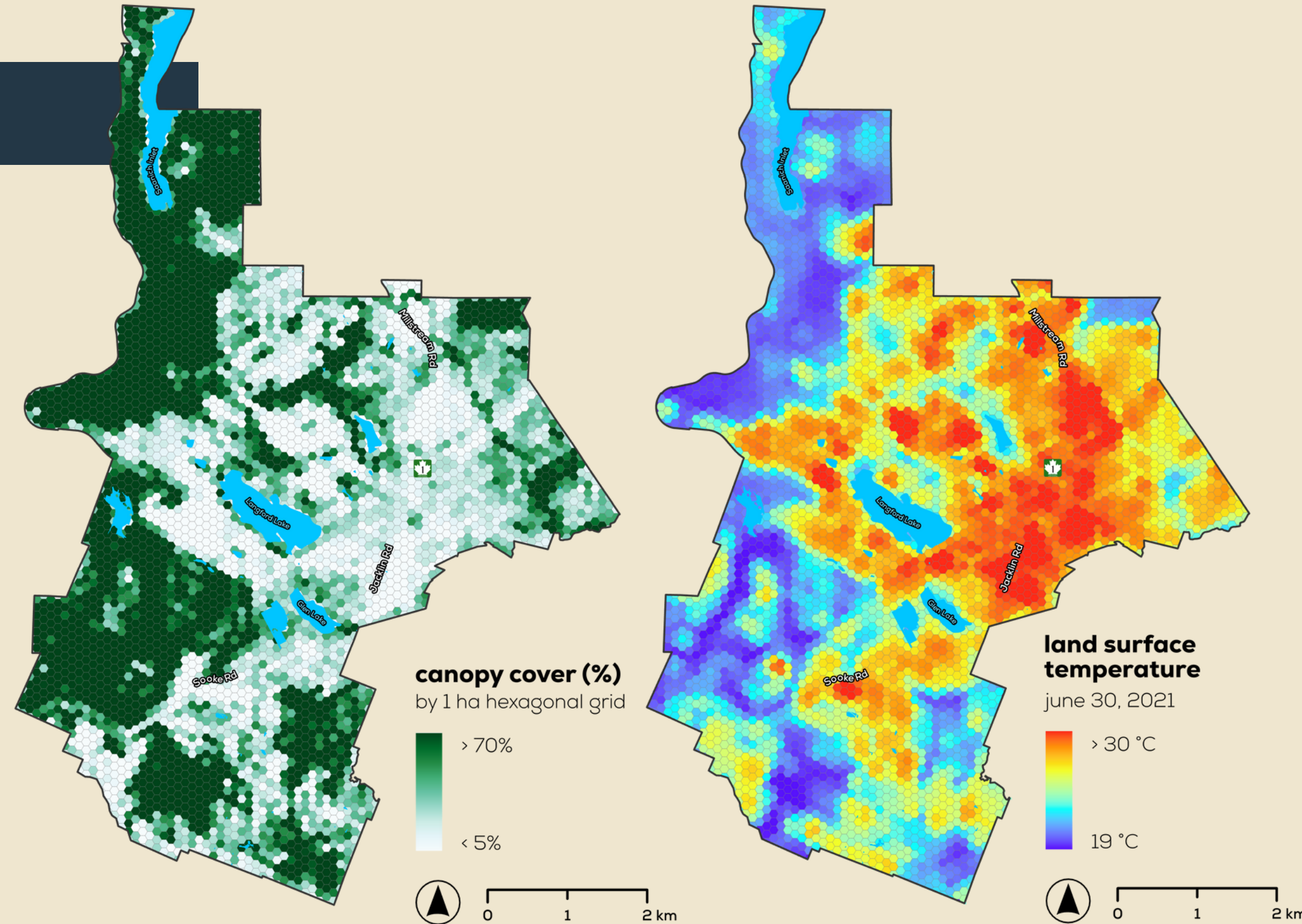






## Heat and canopy cover

- Heat island effect:
  - relationship between impermeable surfaces like buildings and roads, and high temperatures
- Mapping shows forested areas in Langford were up to 12 °C cooler than the built-up City Centre

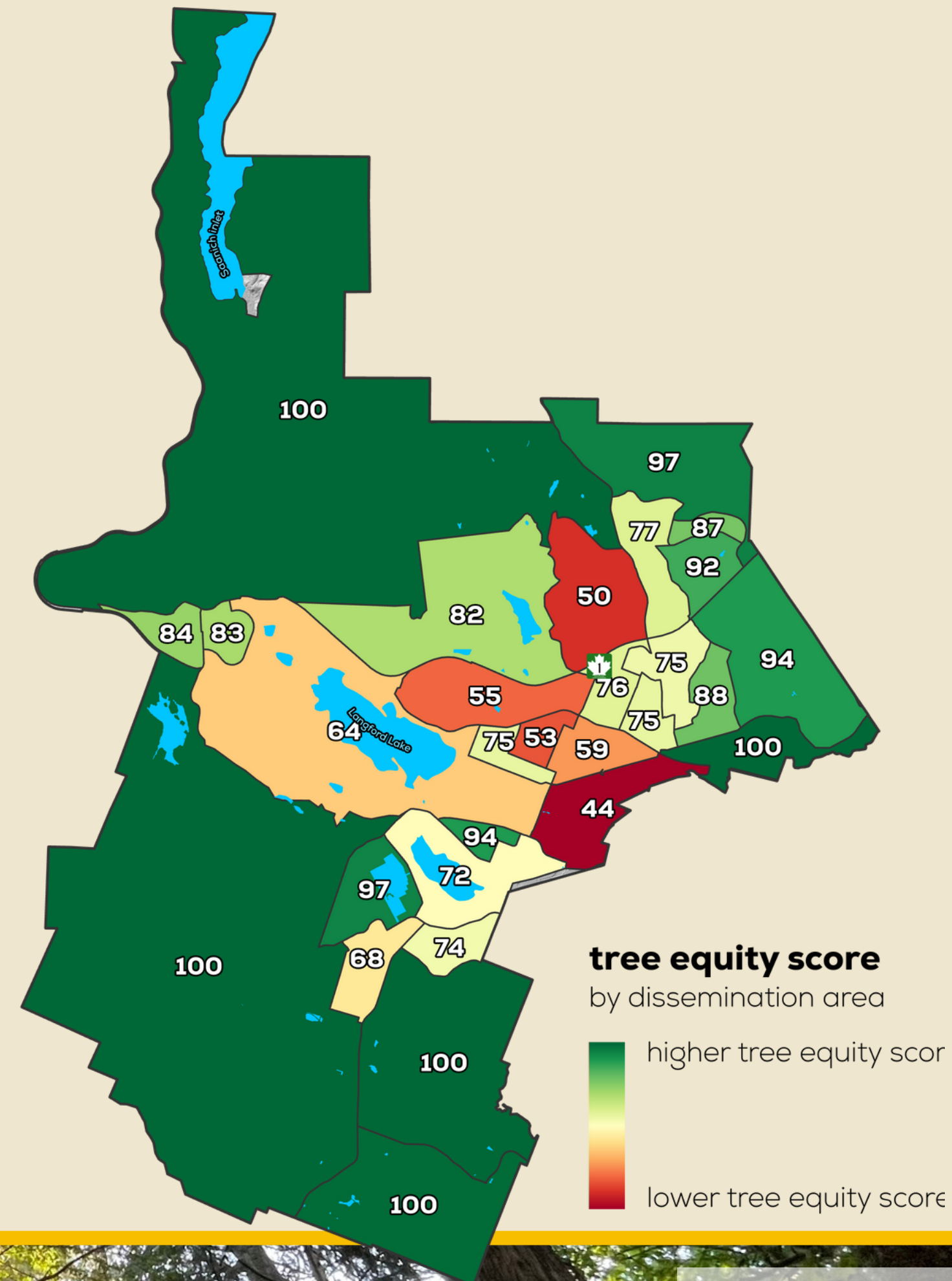






## Equity & access

- Tree Equity Score (TES) to quantify the extent of canopy disparities in a community
  - including 5 socio-economic indicators and surface temperature mapping

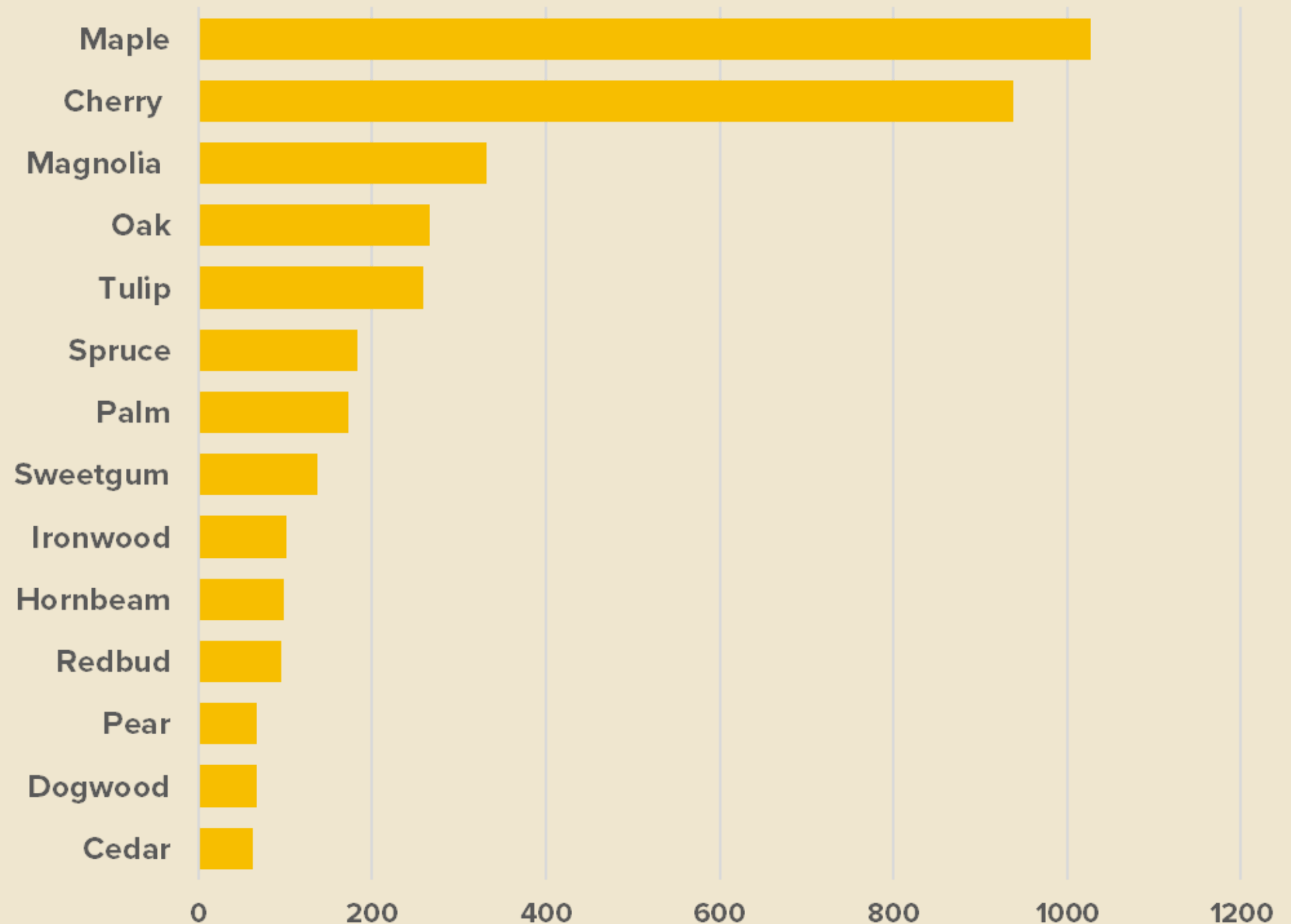






## Tree inventory

- 6,730 trees in the inventory
- Maples (15%) and cherries (14%) are the most abundant
- Tree inventory is missing:
  - diameter at breast height (DBH)
  - condition ratings

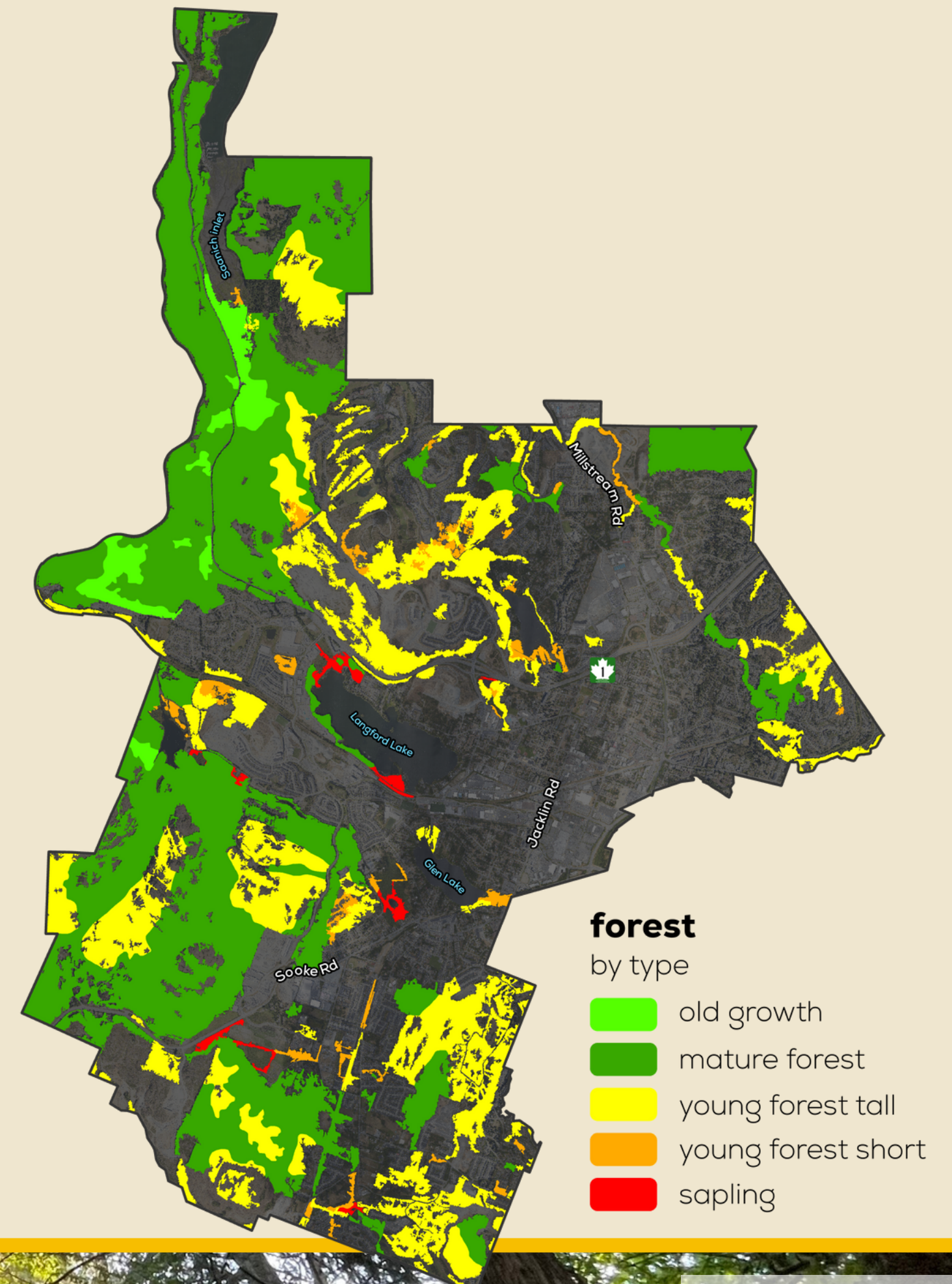






## Natural forests

- Forested natural areas make up 88% of the city's total canopy area
- Most forests in Langford are mature (61%)
- The vast majority are coniferous (90%) or mixed (6%)







STATE OF THE URBAN FOREST

# Where We Are

## Urban Forest Report Card



Planning: 1 poor, 4 fair, 1 good (3 *in progress*)

Stewarding: 2 poor, 2 fair

Protecting: 2 poor, 2 fair, 2 good

Planting: 3 poor, 3 fair, 1 good (1 *insufficient data*)

Managing: 4 poor, 2 fair, 1 good

Adapting: 2 poor, 1 fair





URBAN FOREST MANAGEMENT PLAN

# Phase 1 engagement

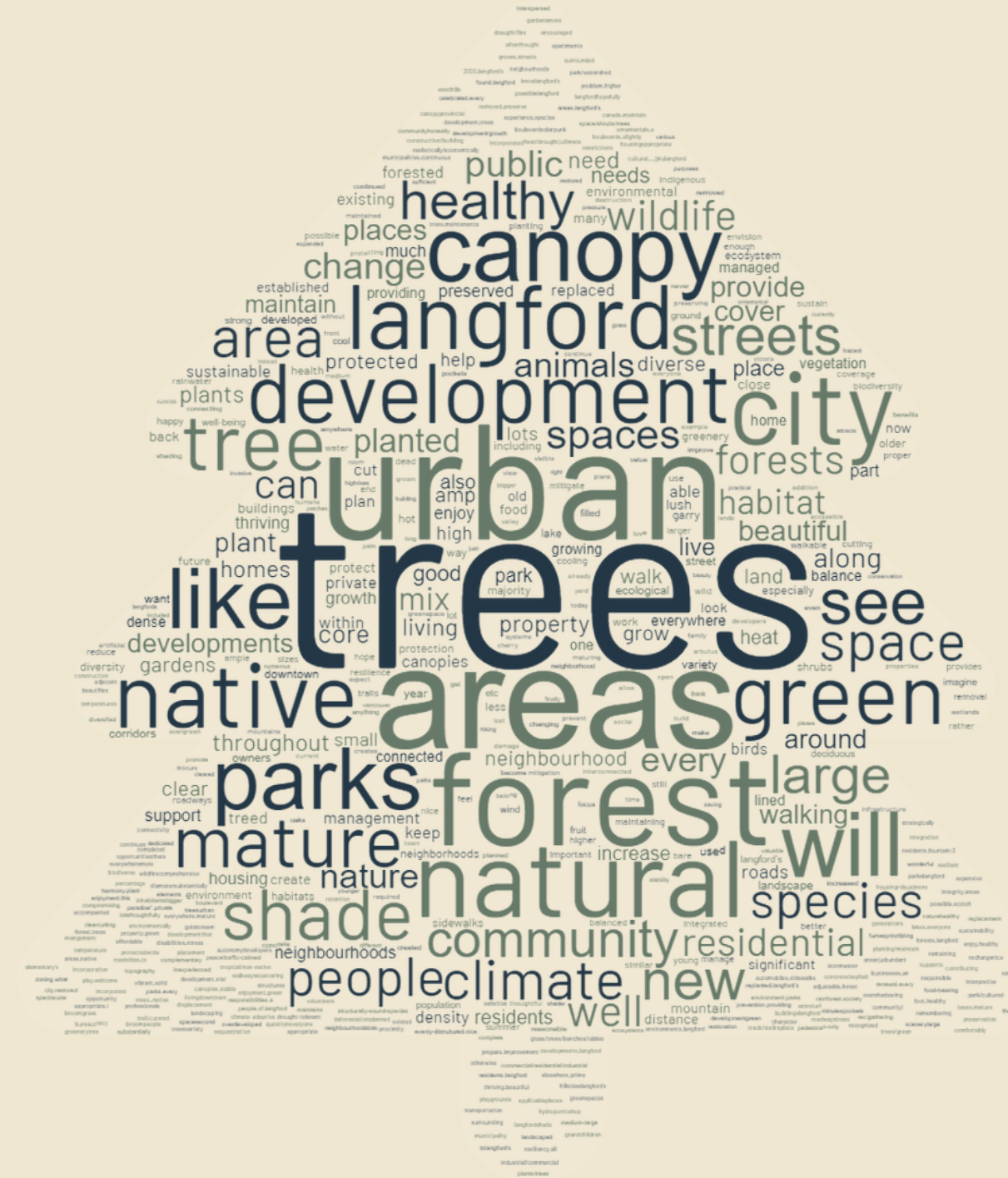






## Engagement activities (November 2023)

- Survey + mapping tool (online)
- Open House (in-person)
- Youth engagement (in-person)







URBAN FOREST MANAGEMENT PLAN

# Next steps

---







## Next steps



## Project timeline



We are here





## Next steps



## Upcoming engagement

Two phases planned

- Phase 1 - fall/winter 2023

- Purpose: understand the community vision, concerns + aspirations for the urban forest



### Plan drafting

- Phase 2 - May 2024

- Purpose: receive feedback on draft Plan + establish implementation priorities





# THANK YOU



**MARCH 18, 2024**

---

